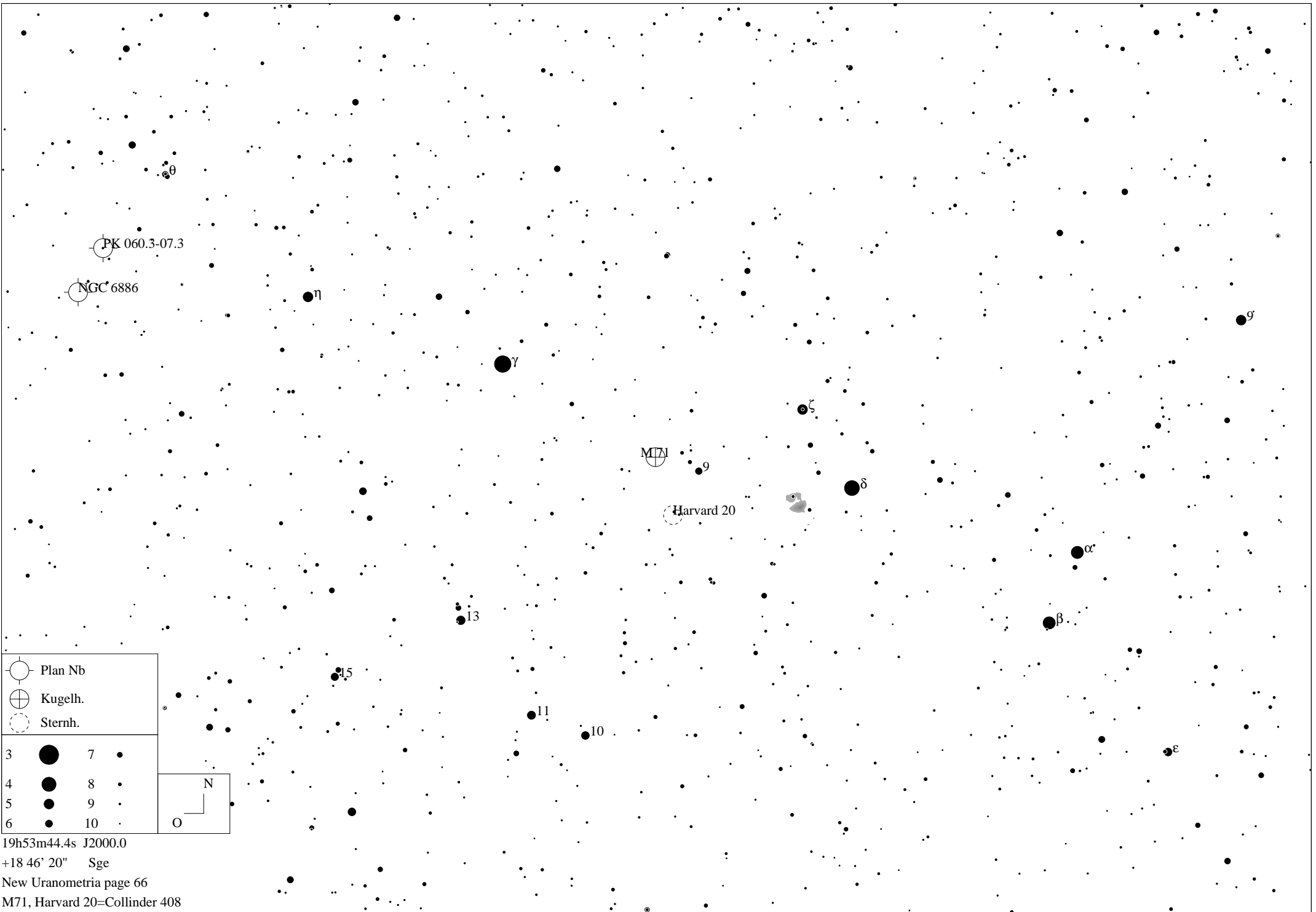


Deep Sky-Objekte in Sagitta (Sge)

Object -----	Type -----	RA --	Dec ---	Mag ---	Size -----	Constellation -----
CR408	Open Cluster	19h 53m 28.2s	+18° 20' 53"	9.6	6.0'x6.0'	Sagitta
M71	Globular Cluster	19h 54m 02.1s	+18° 47' 38"	8.4	7.2'	Sagitta
PK50+03.1	Planetary Nebula	19h 11m 47.2s	+16° 52' 07"	11.2	1.4'x1.4'	Sagitta

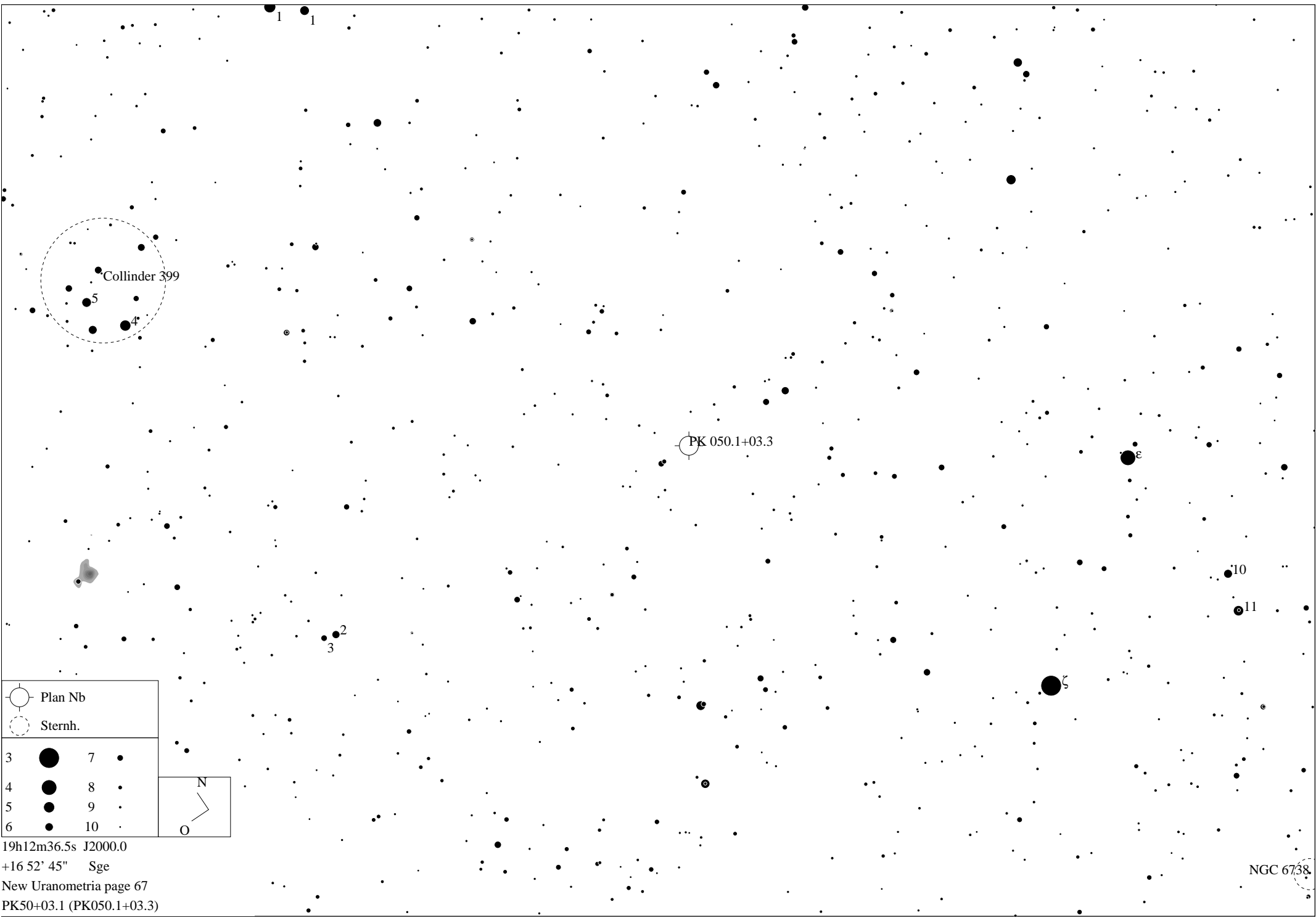



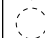
19h53m44.4s J2000.0









+18 46' 20" Sge

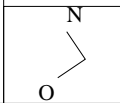
New Uranometria page 66

M71, Harvard 20=Collinder 408



 Plan Nb
 Sternh.

3		7	
4		8	
5		9	
6		10	



19h12m36.5s J2000.0
 +16 52' 45" Sge
 New Uranometria page 67
 PK50+03.1 (PK050.1+03.3)

NGC 6738