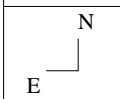


3		7	
4		8	
5		9	
6		10	



Die Bahn des Neptun 2012

# EPHEMERIDE 2012 – NEPTUN

Datum	RA	Deklination	r	delta	mag	Elong	Phase	Höhe	Az.	Gesch.	PA
1 Jan 2012	22h04m14.21s	-12 25' 51.1"	30.002	30.639	7.9	48.9	1.4	-40.38	309.04	4.15	69.6 Aqr
2 Jan 2012	22h04m20.57s	-12 25' 16.3"	30.002	30.652	7.9	47.9	1.4	-40.83	310.13	4.21	69.6 Aqr
3 Jan 2012	22h04m27.01s	-12 24' 41.1"	30.002	30.665	7.9	46.9	1.4	-41.27	311.22	4.27	69.6 Aqr
4 Jan 2012	22h04m33.55s	-12 24' 05.3"	30.002	30.678	7.9	46.0	1.3	-41.70	312.33	4.33	69.7 Aqr
5 Jan 2012	22h04m40.18s	-12 23' 29.0"	30.002	30.690	8.0	45.0	1.3	-42.12	313.45	4.39	69.7 Aqr
6 Jan 2012	22h04m46.89s	-12 22' 52.3"	30.002	30.702	8.0	44.0	1.3	-42.54	314.59	4.44	69.7 Aqr
7 Jan 2012	22h04m53.68s	-12 22' 15.1"	30.002	30.714	8.0	43.0	1.3	-42.95	315.73	4.50	69.7 Aqr
8 Jan 2012	22h05m00.57s	-12 21' 37.4"	30.002	30.726	8.0	42.0	1.3	-43.34	316.89	4.55	69.7 Aqr
9 Jan 2012	22h05m07.53s	-12 20' 59.4"	30.002	30.737	8.0	41.0	1.2	-43.73	318.07	4.61	69.7 Aqr
10 Jan 2012	22h05m14.57s	-12 20' 20.8"	30.002	30.749	8.0	40.0	1.2	-44.11	319.25	4.66	69.7 Aqr
11 Jan 2012	22h05m21.69s	-12 19' 41.9"	30.002	30.760	8.0	39.0	1.2	-44.48	320.45	4.71	69.7 Aqr
12 Jan 2012	22h05m28.89s	-12 19' 02.5"	30.002	30.770	8.0	38.0	1.2	-44.84	321.66	4.76	69.7 Aqr
13 Jan 2012	22h05m36.17s	-12 18' 22.7"	30.002	30.781	8.0	37.1	1.1	-45.19	322.89	4.81	69.7 Aqr
14 Jan 2012	22h05m43.51s	-12 17' 42.5"	30.002	30.791	8.0	36.1	1.1	-45.53	324.12	4.86	69.7 Aqr
15 Jan 2012	22h05m50.93s	-12 17' 01.9"	30.002	30.802	8.0	35.1	1.1	-45.86	325.37	4.90	69.7 Aqr
16 Jan 2012	22h05m58.42s	-12 16' 21.0"	30.002	30.811	8.0	34.1	1.1	-46.18	326.64	4.95	69.7 Aqr
17 Jan 2012	22h06m05.98s	-12 15' 39.6"	30.002	30.821	8.0	33.1	1.0	-46.49	327.91	4.99	69.7 Aqr
18 Jan 2012	22h06m13.61s	-12 14' 57.9"	30.002	30.830	8.0	32.1	1.0	-46.78	329.20	5.04	69.7 Aqr
19 Jan 2012	22h06m21.30s	-12 14' 15.8"	30.002	30.840	8.0	31.1	1.0	-47.07	330.50	5.08	69.7 Aqr
20 Jan 2012	22h06m29.06s	-12 13' 33.4"	30.002	30.849	8.0	30.2	0.9	-47.34	331.81	5.12	69.7 Aqr
21 Jan 2012	22h06m36.88s	-12 12' 50.6"	30.002	30.857	8.0	29.2	0.9	-47.60	333.13	5.16	69.7 Aqr
22 Jan 2012	22h06m44.75s	-12 12' 07.5"	30.002	30.866	8.0	28.2	0.9	-47.85	334.47	5.20	69.7 Aqr
23 Jan 2012	22h06m52.69s	-12 11' 24.1"	30.002	30.874	8.0	27.2	0.9	-48.08	335.82	5.24	69.7 Aqr
24 Jan 2012	22h07m00.68s	-12 10' 40.4"	30.002	30.882	8.0	26.2	0.8	-48.31	337.17	5.27	69.7 Aqr
25 Jan 2012	22h07m08.72s	-12 09' 56.5"	30.002	30.889	8.0	25.2	0.8	-48.52	338.54	5.31	69.7 Aqr
26 Jan 2012	22h07m16.82s	-12 09' 12.2"	30.002	30.896	8.0	24.3	0.8	-48.71	339.91	5.34	69.7 Aqr
27 Jan 2012	22h07m24.96s	-12 08' 27.6"	30.002	30.904	8.0	23.3	0.7	-48.89	341.30	5.37	69.7 Aqr
28 Jan 2012	22h07m33.15s	-12 07' 42.8"	30.002	30.910	8.0	22.3	0.7	-49.06	342.69	5.40	69.7 Aqr
29 Jan 2012	22h07m41.39s	-12 06' 57.8"	30.002	30.917	8.0	21.3	0.7	-49.22	344.10	5.43	69.7 Aqr
30 Jan 2012	22h07m49.67s	-12 06' 12.5"	30.002	30.923	8.0	20.3	0.7	-49.36	345.51	5.46	69.7 Aqr
31 Jan 2012	22h07m57.99s	-12 05' 27.0"	30.001	30.929	8.0	19.4	0.6	-49.49	346.92	5.48	69.7 Aqr
1 Feb 2012	22h08m06.35s	-12 04' 41.2"	30.001	30.935	8.0	18.4	0.6	-49.60	348.35	5.51	69.7 Aqr
2 Feb 2012	22h08m14.74s	-12 03' 55.3"	30.001	30.940	8.0	17.4	0.6	-49.70	349.77	5.53	69.7 Aqr
3 Feb 2012	22h08m23.17s	-12 03' 09.2"	30.001	30.945	8.0	16.4	0.5	-49.78	351.21	5.55	69.7 Aqr
4 Feb 2012	22h08m31.64s	-12 02' 22.9"	30.001	30.950	8.0	15.5	0.5	-49.85	352.64	5.58	69.7 Aqr
5 Feb 2012	22h08m40.13s	-12 01' 36.4"	30.001	30.955	8.0	14.5	0.5	-49.91	354.08	5.59	69.7 Aqr
6 Feb 2012	22h08m48.66s	-12 00' 49.8"	30.001	30.959	8.0	13.5	0.4	-49.95	355.53	5.61	69.7 Aqr
7 Feb 2012	22h08m57.21s	-12 00' 03.0"	30.001	30.963	8.0	12.5	0.4	-49.97	356.97	5.63	69.7 Aqr
8 Feb 2012	22h09m05.79s	-11 59' 16.1"	30.001	30.967	8.0	11.6	0.4	-49.98	358.42	5.65	69.7 Aqr
9 Feb 2012	22h09m14.39s	-11 58' 29.0"	30.001	30.970	8.0	10.6	0.3	-49.98	359.86	5.66	69.7 Aqr
10 Feb 2012	22h09m23.01s	-11 57' 41.8"	30.001	30.974	8.0	9.6	0.3	-49.96	1.31	5.67	69.7 Aqr
11 Feb 2012	22h09m31.65s	-11 56' 54.5"	30.001	30.976	8.0	8.6	0.3	-49.93	2.75	5.69	69.7 Aqr
12 Feb 2012	22h09m40.31s	-11 56' 07.1"	30.001	30.979	8.0	7.7	0.3	-49.88	4.19	5.70	69.7 Aqr
13 Feb 2012	22h09m48.98s	-11 55' 19.7"	30.001	30.981	8.0	6.7	0.2	-49.81	5.63	5.71	69.7 Aqr
14 Feb 2012	22h09m57.67s	-11 54' 32.1"	30.001	30.983	8.0	5.7	0.2	-49.74	7.06	5.72	69.7 Aqr
15 Feb 2012	22h10m06.37s	-11 53' 44.5"	30.001	30.985	8.0	4.8	0.2	-49.64	8.49	5.72	69.7 Aqr
16 Feb 2012	22h10m15.08s	-11 52' 56.8"	30.001	30.987	8.0	3.8	0.1	-49.54	9.91	5.73	69.7 Aqr
17 Feb 2012	22h10m23.80s	-11 52' 09.1"	30.001	30.988	8.0	2.8	0.1	-49.42	11.33	5.73	69.7 Aqr
18 Feb 2012	22h10m32.52s	-11 51' 21.3"	30.001	30.989	8.0	1.9	0.1	-49.28	12.74	5.74	69.7 Aqr
19 Feb 2012	22h10m41.25s	-11 50' 33.5"	30.001	30.989	8.0	1.0	0.0	-49.13	14.15	5.74	69.7 Aqr
20 Feb 2012	22h10m49.98s	-11 49' 45.7"	30.001	30.989	8.0	0.6	0.0	-48.97	15.54	5.74	69.7 Aqr
21 Feb 2012	22h10m58.71s	-11 48' 57.9"	30.001	30.989	8.0	1.2	0.0	-48.79	16.93	5.74	69.7 Aqr
22 Feb 2012	22h11m07.44s	-11 48' 10.2"	30.001	30.989	8.0	2.1	0.1	-48.60	18.31	5.74	69.7 Aqr
23 Feb 2012	22h11m16.16s	-11 47' 22.4"	30.001	30.989	8.0	3.1	0.1	-48.40	19.68	5.73	69.7 Aqr
24 Feb 2012	22h11m24.88s	-11 46' 34.7"	30.001	30.988	8.0	4.1	0.1	-48.18	21.04	5.73	69.7 Aqr
25 Feb 2012	22h11m33.58s	-11 45' 47.0"	30.001	30.987	8.0	5.0	0.2	-47.95	22.39	5.72	69.7 Aqr
26 Feb 2012	22h11m42.28s	-11 44' 59.4"	30.001	30.985	8.0	6.0	0.2	-47.71	23.72	5.71	69.7 Aqr
27 Feb 2012	22h11m50.96s	-11 44' 11.9"	30.001	30.983	8.0	6.9	0.2	-47.45	25.05	5.70	69.7 Aqr
28 Feb 2012	22h11m59.63s	-11 43' 24.5"	30.001	30.981	8.0	7.9	0.3	-47.19	26.36	5.69	69.7 Aqr
29 Feb 2012	22h12m08.28s	-11 42' 37.1"	30.001	30.979	8.0	8.9	0.3	-46.91	27.67	5.68	69.7 Aqr
1 Mär 2012	22h12m16.91s	-11 41' 49.9"	30.001	30.976	8.0	9.8	0.3	-46.62	28.96	5.67	69.7 Aqr
2 Mär 2012	22h12m25.52s	-11 41' 02.8"	30.000	30.973	8.0	10.8	0.4	-46.32	30.23	5.65	69.8 Aqr
3 Mär 2012	22h12m34.10s	-11 40' 15.8"	30.000	30.970	8.0	11.8	0.4	-46.01	31.50	5.64	69.8 Aqr
4 Mär 2012	22h12m42.66s	-11 39' 29.0"	30.000	30.967	8.0	12.7	0.4	-45.68	32.75	5.62	69.8 Aqr
5 Mär 2012	22h12m51.20s	-11 38' 42.3"	30.000	30.963	8.0	13.7	0.4	-45.35	33.99	5.60	69.8 Aqr
6 Mär 2012	22h12m59.70s	-11 37' 55.7"	30.000	30.959	8.0	14.7	0.5	-45.00	35.22	5.58	69.8 Aqr
7 Mär 2012	22h13m08.18s	-11 37' 09.4"	30.000	30.955	8.0	15.6	0.5	-44.65	36.43	5.56	69.8 Aqr
8 Mär 2012	22h13m16.62s	-11 36' 23.2"	30.000	30.950	8.0	16.6	0.5	-44.28	37.63	5.54	69.8 Aqr
9 Mär 2012	22h13m25.03s	-11 35' 37.2"	30.000	30.945	8.0	17.5	0.6	-43.91	38.82	5.51	69.8 Aqr
10 Mär 2012	22h13m33.40s	-11 34' 51.4"	30.000	30.940	8.0	18.5	0.6	-43.52	39.99	5.49	69.8 Aqr
11 Mär 2012	22h13m41.73s	-11 34' 05.8"	30.000	30.935	8.0	19.5	0.6	-43.13	41.16	5.47	69.8 Aqr
12 Mär 2012	22h13m50.03s	-11 33' 20.4"	30.000	30.929	8.0	20.4	0.7	-42.73	42.30	5.44	69.8 Aqr
13 Mär 2012	22h13m58.29s	-11 32' 35.2"	30.000	30.923	8.0	21.4	0.7	-42.32	43.44	5.41	69.8 Aqr
14 Mär 2012	22h14m06.50s	-11 31' 50.3"	30.000	30.917	8.0	22.3	0.7	-41.90	44.56	5.38	69.8 Aqr

# EPHEMERIDE 2012 – NEPTUN

Datum	RA	Deklination	r	delta	mag	Elong	Phase	Höhe	Az.	Gesch.	PA
15 Mär 2012	22h14m14.67s	-11 31' 05.7"	30.000	30.911	8.0	23.3	0.8	-41.47	45.67	5.35	69.8 Aqr
16 Mär 2012	22h14m22.79s	-11 30' 21.3"	30.000	30.904	8.0	24.3	0.8	-41.04	46.77	5.32	69.8 Aqr
17 Mär 2012	22h14m30.86s	-11 29' 37.2"	30.000	30.897	8.0	25.2	0.8	-40.60	47.86	5.29	69.8 Aqr
18 Mär 2012	22h14m38.88s	-11 28' 53.3"	30.000	30.890	8.0	26.2	0.8	-40.15	48.93	5.25	69.8 Aqr
19 Mär 2012	22h14m46.86s	-11 28' 09.8"	30.000	30.882	8.0	27.2	0.9	-39.69	49.99	5.22	69.8 Aqr
20 Mär 2012	22h14m54.77s	-11 27' 26.6"	30.000	30.875	8.0	28.1	0.9	-39.23	51.04	5.18	69.8 Aqr
21 Mär 2012	22h15m02.63s	-11 26' 43.6"	30.000	30.867	8.0	29.1	0.9	-38.76	52.08	5.14	69.8 Aqr
22 Mär 2012	22h15m10.44s	-11 26' 01.0"	30.000	30.858	8.0	30.0	1.0	-38.28	53.11	5.11	69.8 Aqr
23 Mär 2012	22h15m18.18s	-11 25' 18.8"	30.000	30.850	8.0	31.0	1.0	-37.79	54.12	5.07	69.8 Aqr
24 Mär 2012	22h15m25.86s	-11 24' 36.9"	30.000	30.841	8.0	31.9	1.0	-37.31	55.13	5.02	69.8 Aqr
25 Mär 2012	22h15m33.48s	-11 23' 55.3"	30.000	30.832	8.0	32.9	1.0	-36.81	56.12	4.98	69.8 Aqr
26 Mär 2012	22h15m41.09s	-11 23' 14.1"	30.000	30.823	8.0	33.9	1.1	-36.31	57.11	4.94	69.9 Aqr
27 Mär 2012	22h15m48.53s	-11 22' 33.3"	30.000	30.813	8.0	34.8	1.1	-35.80	58.08	4.89	69.9 Aqr
28 Mär 2012	22h15m55.95s	-11 21' 52.9"	30.000	30.804	8.0	35.8	1.1	-35.29	59.04	4.85	69.9 Aqr
29 Mär 2012	22h16m03.30s	-11 21' 12.9"	30.000	30.794	8.0	36.7	1.1	-34.77	60.00	4.80	69.9 Aqr
30 Mär 2012	22h16m10.57s	-11 20' 33.3"	30.000	30.784	8.0	37.7	1.2	-34.25	60.94	4.75	69.9 Aqr
31 Mär 2012	22h16m17.78s	-11 19' 54.1"	30.000	30.773	8.0	38.6	1.2	-33.73	61.88	4.70	69.9 Aqr
1 Apr 2012	22h16m24.91s	-11 19' 15.3"	30.000	30.763	8.0	39.6	1.2	-33.20	62.80	4.65	69.9 Aqr
2 Apr 2012	22h16m31.96s	-11 18' 37.0"	29.999	30.752	8.0	40.6	1.2	-32.66	63.72	4.60	69.9 Aqr
3 Apr 2012	22h16m38.94s	-11 17' 59.1"	29.999	30.741	8.0	41.5	1.3	-32.12	64.63	4.55	69.9 Aqr
4 Apr 2012	22h16m45.84s	-11 17' 21.6"	29.999	30.730	8.0	42.5	1.3	-31.58	65.53	4.50	69.9 Aqr
5 Apr 2012	22h16m52.66s	-11 16' 44.6"	29.999	30.718	8.0	43.4	1.3	-31.03	66.42	4.45	69.9 Aqr
6 Apr 2012	22h16m59.39s	-11 16' 08.1"	29.999	30.706	8.0	44.4	1.3	-30.48	67.31	4.39	70.0 Aqr
7 Apr 2012	22h17m06.05s	-11 15' 32.0"	29.999	30.695	8.0	45.3	1.4	-29.92	68.19	4.34	70.0 Aqr
8 Apr 2012	22h17m12.62s	-11 14' 56.4"	29.999	30.682	8.0	46.3	1.4	-29.37	69.06	4.28	70.0 Aqr
9 Apr 2012	22h17m19.10s	-11 14' 21.3"	29.999	30.670	7.9	47.2	1.4	-28.80	69.92	4.22	70.0 Aqr
10 Apr 2012	22h17m25.50s	-11 13' 46.7"	29.999	30.658	7.9	48.2	1.4	-28.24	70.78	4.16	70.0 Aqr
11 Apr 2012	22h17m31.81s	-11 13' 12.5"	29.999	30.645	7.9	49.1	1.4	-27.67	71.63	4.11	70.0 Aqr
12 Apr 2012	22h17m38.03s	-11 12' 38.9"	29.999	30.632	7.9	50.1	1.5	-27.10	72.47	4.05	70.0 Aqr
13 Apr 2012	22h17m44.16s	-11 12' 05.9"	29.999	30.619	7.9	51.1	1.5	-26.53	73.31	3.98	70.1 Aqr
14 Apr 2012	22h17m50.20s	-11 11' 33.3"	29.999	30.606	7.9	52.0	1.5	-25.95	74.14	3.92	70.1 Aqr
15 Apr 2012	22h17m56.14s	-11 11' 01.3"	29.999	30.593	7.9	53.0	1.5	-25.37	74.97	3.86	70.1 Aqr
16 Apr 2012	22h18m01.99s	-11 10' 29.8"	29.999	30.579	7.9	53.9	1.5	-24.79	75.79	3.80	70.1 Aqr
17 Apr 2012	22h18m07.75s	-11 09' 58.9"	29.999	30.565	7.9	54.9	1.6	-24.21	76.60	3.73	70.1 Aqr
18 Apr 2012	22h18m13.40s	-11 09' 28.5"	29.999	30.552	7.9	55.8	1.6	-23.63	77.41	3.67	70.2 Aqr
19 Apr 2012	22h18m18.96s	-11 08' 58.7"	29.999	30.538	7.9	56.8	1.6	-23.04	78.22	3.60	70.2 Aqr
20 Apr 2012	22h18m24.41s	-11 08' 29.5"	29.999	30.523	7.9	57.7	1.6	-22.45	79.02	3.53	70.2 Aqr
21 Apr 2012	22h18m29.77s	-11 08' 00.8"	29.999	30.509	7.9	58.7	1.6	-21.86	79.82	3.47	70.2 Aqr
22 Apr 2012	22h18m35.02s	-11 07' 32.7"	29.999	30.494	7.9	59.6	1.7	-21.27	80.61	3.40	70.3 Aqr
23 Apr 2012	22h18m40.17s	-11 07' 05.3"	29.999	30.480	7.9	60.6	1.7	-20.68	81.40	3.33	70.3 Aqr
24 Apr 2012	22h18m45.21s	-11 06' 38.4"	29.999	30.465	7.9	61.5	1.7	-20.08	82.19	3.26	70.3 Aqr
25 Apr 2012	22h18m50.14s	-11 06' 12.2"	29.999	30.450	7.9	62.5	1.7	-19.49	82.97	3.19	70.3 Aqr
26 Apr 2012	22h18m54.97s	-11 05' 46.5"	29.999	30.435	7.9	63.4	1.7	-18.89	83.75	3.12	70.4 Aqr
27 Apr 2012	22h18m59.69s	-11 05' 21.5"	29.999	30.420	7.9	64.4	1.7	-18.29	84.53	3.04	70.4 Aqr
28 Apr 2012	22h19m04.30s	-11 04' 57.1"	29.999	30.405	7.9	65.4	1.7	-17.69	85.30	2.97	70.4 Aqr
29 Apr 2012	22h19m08.81s	-11 04' 33.3"	29.999	30.389	7.9	66.3	1.8	-17.09	86.07	2.90	70.5 Aqr
30 Apr 2012	22h19m13.20s	-11 04' 10.2"	29.999	30.374	7.9	67.3	1.8	-16.49	86.84	2.82	70.5 Aqr
1 Mai 2012	22h19m17.48s	-11 03' 47.7"	29.999	30.358	7.9	68.2	1.8	-15.89	87.61	2.75	70.6 Aqr
2 Mai 2012	22h19m21.64s	-11 03' 25.8"	29.999	30.342	7.9	69.2	1.8	-15.29	88.37	2.67	70.6 Aqr
3 Mai 2012	22h19m25.70s	-11 03' 04.6"	29.998	30.326	7.9	70.1	1.8	-14.69	89.13	2.60	70.7 Aqr
4 Mai 2012	22h19m29.64s	-11 02' 44.0"	29.998	30.310	7.9	71.1	1.8	-14.09	89.89	2.52	70.7 Aqr
5 Mai 2012	22h19m33.47s	-11 02' 24.1"	29.998	30.294	7.9	72.0	1.8	-13.49	90.65	2.45	70.8 Aqr
6 Mai 2012	22h19m37.18s	-11 02' 04.9"	29.998	30.278	7.9	73.0	1.8	-12.88	91.41	2.37	70.8 Aqr
7 Mai 2012	22h19m40.77s	-11 01' 46.3"	29.998	30.262	7.9	73.9	1.9	-12.28	92.17	2.29	70.9 Aqr
8 Mai 2012	22h19m44.25s	-11 01' 28.3"	29.998	30.246	7.9	74.9	1.9	-11.68	92.92	2.22	70.9 Aqr
9 Mai 2012	22h19m47.62s	-11 01' 11.1"	29.998	30.230	7.9	75.8	1.9	-11.08	93.68	2.14	71.0 Aqr
10 Mai 2012	22h19m50.87s	-11 00' 54.5"	29.998	30.213	7.9	76.8	1.9	-10.48	94.43	2.06	71.1 Aqr
11 Mai 2012	22h19m53.99s	-11 00' 38.6"	29.998	30.197	7.9	77.7	1.9	-9.87	95.19	1.98	71.2 Aqr
12 Mai 2012	22h19m57.00s	-11 00' 23.3"	29.998	30.180	7.9	78.7	1.9	-9.27	95.94	1.90	71.3 Aqr
13 Mai 2012	22h19m59.89s	-11 00' 08.8"	29.998	30.163	7.9	79.6	1.9	-8.67	96.69	1.82	71.4 Aqr
14 Mai 2012	22h20m02.66s	-10 59' 54.9"	29.998	30.147	7.9	80.6	1.9	-8.08	97.45	1.74	71.5 Aqr
15 Mai 2012	22h20m05.31s	-10 59' 41.8"	29.998	30.130	7.9	81.5	1.9	-7.48	98.20	1.66	71.6 Aqr
16 Mai 2012	22h20m07.84s	-10 59' 29.3"	29.998	30.113	7.9	82.5	1.9	-6.88	98.95	1.58	71.8 Aqr
17 Mai 2012	22h20m10.25s	-10 59' 17.5"	29.998	30.097	7.9	83.4	1.9	-6.28	99.71	1.50	71.9 Aqr
18 Mai 2012	22h20m12.53s	-10 59' 06.4"	29.998	30.080	7.9	84.4	1.9	-5.69	100.47	1.42	72.1 Aqr
19 Mai 2012	22h20m14.69s	-10 58' 56.1"	29.998	30.063	7.9	85.4	1.9	-5.10	101.22	1.34	72.3 Aqr
20 Mai 2012	22h20m16.72s	-10 58' 46.4"	29.998	30.046	7.9	86.3	1.9	-4.50	101.98	1.26	72.5 Aqr
21 Mai 2012	22h20m18.64s	-10 58' 37.5"	29.998	30.029	7.9	87.3	1.9	-3.91	102.74	1.17	72.7 Aqr
22 Mai 2012	22h20m20.43s	-10 58' 29.2"	29.998	30.012	7.9	88.2	1.9	-3.32	103.50	1.09	73.0 Aqr
23 Mai 2012	22h20m22.09s	-10 58' 21.7"	29.998	29.995	7.9	89.2	1.9	-2.74	104.26	1.01	73.3 Aqr
24 Mai 2012	22h20m23.63s	-10 58' 14.9"	29.998	29.978	7.9	90.1	1.9	-2.15	105.02	0.93	73.7 Aqr
25 Mai 2012	22h20m25.05s	-10 58' 08.8"	29.998	29.962	7.9	91.1	1.9	-1.57	105.79	0.85	74.2 Aqr
26 Mai 2012	22h20m26.34s	-10 58' 03.4"	29.998	29.945	7.9	92.0	1.9	-0.98	106.55	0.76	74.7 Aqr
27 Mai 2012	22h20m27.50s	-10 57' 58.7"	29.998	29.928	7.9	93.0	1.9	-0.41	107.32	0.68	75.4 Aqr

# EPHEMERIDE 2012 – NEPTUN

Datum	RA	Deklination	r	delta	mag	Elong	Phase	Höhe	Az.	Gesch.	PA
28 Mai 2012	22h20m28.54s	-10 57' 54.7"	29.998	29.911	7.9	93.9	1.9	0.17	108.10	0.60	76.3 Aqr
29 Mai 2012	22h20m29.46s	-10 57' 51.4"	29.998	29.894	7.9	94.9	1.9	0.75	108.87	0.52	77.4 Aqr
30 Mai 2012	22h20m30.25s	-10 57' 48.9"	29.998	29.877	7.9	95.9	1.9	1.32	109.65	0.43	79.0 Aqr
31 Mai 2012	22h20m30.92s	-10 57' 47.0"	29.998	29.860	7.9	96.8	1.9	1.89	110.43	0.35	81.2 Aqr
1 Jun 2012	22h20m31.46s	-10 57' 45.8"	29.998	29.844	7.9	97.8	1.9	2.46	111.21	0.27	84.9 Aqr
2 Jun 2012	22h20m31.88s	-10 57' 45.4"	29.998	29.827	7.9	98.7	1.9	3.02	111.99	0.20	91.3 Aqr
3 Jun 2012	22h20m32.18s	-10 57' 45.7"	29.997	29.810	7.9	99.7	1.9	3.58	112.78	0.12	105.7 Aqr
4 Jun 2012	22h20m32.35s	-10 57' 46.6"	29.997	29.794	7.9	100.6	1.9	4.14	113.57	0.08	145.1 Aqr
5 Jun 2012	22h20m32.40s	-10 57' 48.3"	29.997	29.777	7.9	101.6	1.9	4.69	114.37	0.10	199.4 Aqr
6 Jun 2012	22h20m32.33s	-10 57' 50.6"	29.997	29.760	7.9	102.6	1.9	5.25	115.17	0.16	221.9 Aqr
7 Jun 2012	22h20m32.13s	-10 57' 53.7"	29.997	29.744	7.9	103.5	1.9	5.79	115.97	0.24	230.9 Aqr
8 Jun 2012	22h20m31.82s	-10 57' 57.4"	29.997	29.728	7.9	104.5	1.9	6.34	116.78	0.32	235.5 Aqr
9 Jun 2012	22h20m31.38s	-10 58' 01.9"	29.997	29.711	7.9	105.4	1.9	6.88	117.59	0.39	238.3 Aqr
10 Jun 2012	22h20m30.81s	-10 58' 07.0"	29.997	29.695	7.9	106.4	1.9	7.41	118.40	0.47	240.1 Aqr
11 Jun 2012	22h20m30.13s	-10 58' 12.8"	29.997	29.679	7.9	107.3	1.9	7.95	119.22	0.55	241.4 Aqr
12 Jun 2012	22h20m29.32s	-10 58' 19.3"	29.997	29.663	7.9	108.3	1.8	8.48	120.04	0.63	242.4 Aqr
13 Jun 2012	22h20m28.39s	-10 58' 26.5"	29.997	29.647	7.9	109.3	1.8	9.00	120.87	0.71	243.2 Aqr
14 Jun 2012	22h20m27.35s	-10 58' 34.4"	29.997	29.631	7.9	110.2	1.8	9.52	121.70	0.79	243.8 Aqr
15 Jun 2012	22h20m26.18s	-10 58' 43.0"	29.997	29.615	7.9	111.2	1.8	10.03	122.54	0.87	244.3 Aqr
16 Jun 2012	22h20m24.89s	-10 58' 52.2"	29.997	29.599	7.9	112.1	1.8	10.55	123.38	0.95	244.7 Aqr
17 Jun 2012	22h20m23.48s	-10 59' 02.2"	29.997	29.584	7.9	113.1	1.8	11.05	124.23	1.03	245.0 Aqr
18 Jun 2012	22h20m21.95s	-10 59' 12.8"	29.997	29.568	7.9	114.1	1.8	11.55	125.08	1.11	245.3 Aqr
19 Jun 2012	22h20m20.31s	-10 59' 24.0"	29.997	29.553	7.9	115.0	1.8	12.05	125.94	1.19	245.6 Aqr
20 Jun 2012	22h20m18.54s	-10 59' 35.9"	29.997	29.538	7.9	116.0	1.7	12.54	126.80	1.26	245.8 Aqr
21 Jun 2012	22h20m16.66s	-10 59' 48.5"	29.997	29.522	7.9	117.0	1.7	13.02	127.67	1.34	246.0 Aqr
22 Jun 2012	22h20m14.67s	-11 00' 01.7"	29.997	29.507	7.9	117.9	1.7	13.50	128.54	1.42	246.2 Aqr
23 Jun 2012	22h20m12.56s	-11 00' 15.6"	29.997	29.493	7.9	118.9	1.7	13.97	129.42	1.49	246.4 Aqr
24 Jun 2012	22h20m10.33s	-11 00' 30.1"	29.997	29.478	7.9	119.9	1.7	14.44	130.31	1.57	246.5 Aqr
25 Jun 2012	22h20m08.00s	-11 00' 45.2"	29.997	29.463	7.9	120.8	1.7	14.90	131.20	1.64	246.7 Aqr
26 Jun 2012	22h20m05.55s	-11 01' 01.0"	29.997	29.449	7.9	121.8	1.7	15.36	132.09	1.71	246.8 Aqr
27 Jun 2012	22h20m02.99s	-11 01' 17.4"	29.997	29.435	7.9	122.7	1.6	15.81	133.00	1.79	246.9 Aqr
28 Jun 2012	22h20m00.32s	-11 01' 34.3"	29.997	29.421	7.9	123.7	1.6	16.25	133.90	1.86	247.0 Aqr
29 Jun 2012	22h19m57.54s	-11 01' 51.9"	29.997	29.407	7.9	124.7	1.6	16.68	134.82	1.93	247.1 Aqr
30 Jun 2012	22h19m54.66s	-11 02' 10.1"	29.997	29.393	7.9	125.6	1.6	17.11	135.74	2.00	247.2 Aqr
1 Jul 2012	22h19m51.67s	-11 02' 28.9"	29.997	29.379	7.9	126.6	1.6	17.53	136.67	2.07	247.3 Aqr
2 Jul 2012	22h19m48.58s	-11 02' 48.2"	29.997	29.366	7.9	127.6	1.5	17.95	137.60	2.14	247.3 Aqr
3 Jul 2012	22h19m45.38s	-11 03' 08.1"	29.997	29.352	7.9	128.5	1.5	18.35	138.54	2.20	247.4 Aqr
4 Jul 2012	22h19m42.08s	-11 03' 28.6"	29.996	29.339	7.9	129.5	1.5	18.75	139.48	2.27	247.5 Aqr
5 Jul 2012	22h19m38.68s	-11 03' 49.7"	29.996	29.327	7.9	130.5	1.5	19.14	140.43	2.34	247.5 Aqr
6 Jul 2012	22h19m35.17s	-11 04' 11.3"	29.996	29.314	7.9	131.4	1.5	19.53	141.39	2.40	247.6 Aqr
7 Jul 2012	22h19m31.57s	-11 04' 33.4"	29.996	29.301	7.8	132.4	1.4	19.90	142.36	2.47	247.6 Aqr
8 Jul 2012	22h19m27.87s	-11 04' 56.1"	29.996	29.289	7.8	133.4	1.4	20.27	143.33	2.53	247.7 Aqr
9 Jul 2012	22h19m24.08s	-11 05' 19.3"	29.996	29.277	7.8	134.4	1.4	20.63	144.30	2.59	247.7 Aqr
10 Jul 2012	22h19m20.19s	-11 05' 43.1"	29.996	29.265	7.8	135.3	1.4	20.98	145.29	2.66	247.8 Aqr
11 Jul 2012	22h19m16.21s	-11 06' 07.3"	29.996	29.253	7.8	136.3	1.3	21.32	146.28	2.72	247.8 Aqr
12 Jul 2012	22h19m12.13s	-11 06' 32.1"	29.996	29.242	7.8	137.3	1.3	21.65	147.27	2.78	247.9 Aqr
13 Jul 2012	22h19m07.96s	-11 06' 57.4"	29.996	29.230	7.8	138.2	1.3	21.97	148.27	2.84	247.9 Aqr
14 Jul 2012	22h19m03.70s	-11 07' 23.1"	29.996	29.219	7.8	139.2	1.3	22.29	149.28	2.90	248.0 Aqr
15 Jul 2012	22h18m59.36s	-11 07' 49.3"	29.996	29.208	7.8	140.2	1.2	22.59	150.29	2.95	248.0 Aqr
16 Jul 2012	22h18m54.92s	-11 08' 16.0"	29.996	29.198	7.8	141.2	1.2	22.89	151.31	3.01	248.0 Aqr
17 Jul 2012	22h18m50.41s	-11 08' 43.2"	29.996	29.187	7.8	142.1	1.2	23.17	152.34	3.06	248.1 Aqr
18 Jul 2012	22h18m45.80s	-11 09' 10.8"	29.996	29.177	7.8	143.1	1.2	23.45	153.37	3.12	248.1 Aqr
19 Jul 2012	22h18m41.12s	-11 09' 38.9"	29.996	29.167	7.8	144.1	1.1	23.71	154.41	3.17	248.1 Aqr
20 Jul 2012	22h18m36.36s	-11 10' 07.3"	29.996	29.157	7.8	145.1	1.1	23.97	155.45	3.22	248.2 Aqr
21 Jul 2012	22h18m31.52s	-11 10' 36.2"	29.996	29.148	7.8	146.0	1.1	24.21	156.50	3.27	248.2 Aqr
22 Jul 2012	22h18m26.60s	-11 11' 05.5"	29.996	29.139	7.8	147.0	1.1	24.45	157.55	3.32	248.2 Aqr
23 Jul 2012	22h18m21.61s	-11 11' 35.2"	29.996	29.130	7.8	148.0	1.0	24.67	158.61	3.37	248.3 Aqr
24 Jul 2012	22h18m16.55s	-11 12' 05.3"	29.996	29.121	7.8	149.0	1.0	24.88	159.67	3.42	248.3 Aqr
25 Jul 2012	22h18m11.42s	-11 12' 35.7"	29.996	29.112	7.8	149.9	1.0	25.09	160.74	3.46	248.3 Aqr
26 Jul 2012	22h18m06.22s	-11 13' 06.5"	29.996	29.104	7.8	150.9	0.9	25.28	161.81	3.50	248.4 Aqr
27 Jul 2012	22h18m00.96s	-11 13' 37.7"	29.996	29.096	7.8	151.9	0.9	25.46	162.88	3.55	248.4 Aqr
28 Jul 2012	22h17m55.63s	-11 14' 09.1"	29.996	29.088	7.8	152.9	0.9	25.62	163.96	3.59	248.4 Aqr
29 Jul 2012	22h17m50.24s	-11 14' 40.9"	29.996	29.081	7.8	153.9	0.9	25.78	165.05	3.63	248.4 Aqr
30 Jul 2012	22h17m44.79s	-11 15' 13.0"	29.996	29.074	7.8	154.8	0.8	25.93	166.13	3.66	248.5 Aqr
31 Jul 2012	22h17m39.28s	-11 15' 45.4"	29.996	29.067	7.8	155.8	0.8	26.06	167.22	3.70	248.5 Aqr
1 Aug 2012	22h17m33.72s	-11 16' 18.1"	29.996	29.060	7.8	156.8	0.8	26.19	168.32	3.74	248.5 Aqr
2 Aug 2012	22h17m28.10s	-11 16' 51.1"	29.996	29.054	7.8	157.8	0.7	26.30	169.41	3.77	248.5 Aqr
3 Aug 2012	22h17m22.43s	-11 17' 24.3"	29.996	29.048	7.8	158.8	0.7	26.40	170.51	3.80	248.6 Aqr
4 Aug 2012	22h17m16.71s	-11 17' 57.8"	29.995	29.042	7.8	159.7	0.7	26.48	171.61	3.83	248.6 Aqr
5 Aug 2012	22h17m10.94s	-11 18' 31.5"	29.995	29.036	7.8	160.7	0.6	26.56	172.72	3.86	248.6 Aqr
6 Aug 2012	22h17m05.13s	-11 19' 05.5"	29.995	29.031	7.8	161.7	0.6	26.62	173.82	3.89	248.6 Aqr
7 Aug 2012	22h16m59.27s	-11 19' 39.6"	29.995	29.026	7.8	162.7	0.6	26.67	174.93	3.92	248.6 Aqr
8 Aug 2012	22h16m53.37s	-11 20' 14.0"	29.995	29.021	7.8	163.7	0.5	26.71	176.04	3.95	248.7 Aqr
9 Aug 2012	22h16m47.43s	-11 20' 48.6"	29.995	29.016	7.8	164.7	0.5	26.74	177.15	3.97	248.7 Aqr

# EPHEMERIDE 2012 – NEPTUN

Datum	RA	Deklination	r	delta	mag	Elong	Phase	Höhe	Az.	Gesch.	PA
10 Aug 2012	22h16m41.46s	-11 21' 23.3"	29.995	29.012	7.8	165.6	0.5	26.76	178.26	4.00	248.7 Aqr
11 Aug 2012	22h16m35.45s	-11 21' 58.2"	29.995	29.008	7.8	166.6	0.4	26.76	179.37	4.02	248.7 Aqr
12 Aug 2012	22h16m29.40s	-11 22' 33.3"	29.995	29.005	7.8	167.6	0.4	26.75	180.48	4.04	248.8 Aqr
13 Aug 2012	22h16m23.32s	-11 23' 08.5"	29.995	29.001	7.8	168.6	0.4	26.73	181.59	4.06	248.8 Aqr
14 Aug 2012	22h16m17.22s	-11 23' 43.9"	29.995	28.998	7.8	169.6	0.4	26.70	182.70	4.07	248.8 Aqr
15 Aug 2012	22h16m11.09s	-11 24' 19.3"	29.995	28.996	7.8	170.6	0.3	26.65	183.80	4.09	248.8 Aqr
16 Aug 2012	22h16m04.93s	-11 24' 54.9"	29.995	28.993	7.8	171.6	0.3	26.59	184.91	4.10	248.8 Aqr
17 Aug 2012	22h15m58.76s	-11 25' 30.5"	29.995	28.991	7.8	172.5	0.3	26.52	186.02	4.11	248.9 Aqr
18 Aug 2012	22h15m52.56s	-11 26' 06.2"	29.995	28.989	7.8	173.5	0.2	26.44	187.12	4.13	248.9 Aqr
19 Aug 2012	22h15m46.35s	-11 26' 42.0"	29.995	28.987	7.8	174.5	0.2	26.35	188.22	4.13	248.9 Aqr
20 Aug 2012	22h15m40.12s	-11 27' 17.8"	29.995	28.986	7.8	175.5	0.2	26.24	189.32	4.14	248.9 Aqr
21 Aug 2012	22h15m33.88s	-11 27' 53.6"	29.995	28.985	7.8	176.5	0.1	26.13	190.42	4.15	248.9 Aqr
22 Aug 2012	22h15m27.64s	-11 28' 29.5"	29.995	28.984	7.8	177.4	0.1	26.00	191.52	4.15	249.0 Aqr
23 Aug 2012	22h15m21.39s	-11 29' 05.4"	29.995	28.984	7.8	178.4	0.1	25.86	192.61	4.15	249.0 Aqr
24 Aug 2012	22h15m15.13s	-11 29' 41.2"	29.995	28.984	7.8	179.2	0.0	25.71	193.70	4.15	249.0 Aqr
25 Aug 2012	22h15m08.87s	-11 30' 17.0"	29.995	28.984	7.8	179.2	0.0	25.54	194.78	4.15	249.0 Aqr
26 Aug 2012	22h15m02.62s	-11 30' 52.8"	29.995	28.985	7.8	178.4	0.1	25.37	195.86	4.15	249.0 Aqr
27 Aug 2012	22h14m56.36s	-11 31' 28.5"	29.995	28.985	7.8	177.5	0.1	25.18	196.94	4.15	249.0 Aqr
28 Aug 2012	22h14m50.12s	-11 32' 04.2"	29.995	28.986	7.8	176.5	0.1	24.99	198.01	4.14	249.1 Aqr
29 Aug 2012	22h14m43.88s	-11 32' 39.7"	29.995	28.988	7.8	175.5	0.2	24.78	199.08	4.13	249.1 Aqr
30 Aug 2012	22h14m37.65s	-11 33' 15.2"	29.995	28.989	7.8	174.5	0.2	24.56	200.14	4.13	249.1 Aqr
31 Aug 2012	22h14m31.43s	-11 33' 50.6"	29.995	28.991	7.8	173.5	0.2	24.33	201.20	4.12	249.1 Aqr
1 Sep 2012	22h14m25.23s	-11 34' 25.9"	29.995	28.994	7.8	172.5	0.3	24.09	202.26	4.10	249.1 Aqr
2 Sep 2012	22h14m19.04s	-11 35' 01.0"	29.995	28.996	7.8	171.5	0.3	23.84	203.31	4.09	249.2 Aqr
3 Sep 2012	22h14m12.88s	-11 35' 36.0"	29.995	28.999	7.8	170.6	0.3	23.58	204.35	4.08	249.2 Aqr
4 Sep 2012	22h14m06.73s	-11 36' 10.8"	29.994	29.002	7.8	169.6	0.3	23.31	205.39	4.06	249.2 Aqr
5 Sep 2012	22h14m00.61s	-11 36' 45.5"	29.994	29.006	7.8	168.6	0.4	23.02	206.42	4.04	249.2 Aqr
6 Sep 2012	22h13m54.52s	-11 37' 20.0"	29.994	29.009	7.8	167.6	0.4	22.73	207.45	4.02	249.2 Aqr
7 Sep 2012	22h13m48.45s	-11 37' 54.3"	29.994	29.013	7.8	166.6	0.4	22.43	208.47	4.00	249.2 Aqr
8 Sep 2012	22h13m42.42s	-11 38' 28.4"	29.994	29.018	7.8	165.6	0.5	22.12	209.49	3.98	249.3 Aqr
9 Sep 2012	22h13m36.41s	-11 39' 02.3"	29.994	29.022	7.8	164.6	0.5	21.80	210.50	3.96	249.3 Aqr
10 Sep 2012	22h13m30.45s	-11 39' 35.9"	29.994	29.027	7.8	163.6	0.5	21.47	211.50	3.93	249.3 Aqr
11 Sep 2012	22h13m24.52s	-11 40' 09.3"	29.994	29.032	7.8	162.6	0.6	21.13	212.50	3.91	249.3 Aqr
12 Sep 2012	22h13m18.63s	-11 40' 42.5"	29.994	29.038	7.8	161.6	0.6	20.78	213.49	3.88	249.3 Aqr
13 Sep 2012	22h13m12.78s	-11 41' 15.4"	29.994	29.043	7.8	160.6	0.6	20.43	214.48	3.85	249.4 Aqr
14 Sep 2012	22h13m06.98s	-11 41' 48.0"	29.994	29.049	7.8	159.6	0.7	20.06	215.46	3.82	249.4 Aqr
15 Sep 2012	22h13m01.23s	-11 42' 20.2"	29.994	29.056	7.8	158.6	0.7	19.69	216.43	3.78	249.4 Aqr
16 Sep 2012	22h12m55.52s	-11 42' 52.2"	29.994	29.062	7.8	157.6	0.7	19.31	217.40	3.75	249.4 Aqr
17 Sep 2012	22h12m49.87s	-11 43' 23.9"	29.994	29.069	7.8	156.6	0.8	18.92	218.36	3.71	249.4 Aqr
18 Sep 2012	22h12m44.27s	-11 43' 55.2"	29.994	29.076	7.8	155.6	0.8	18.52	219.31	3.68	249.4 Aqr
19 Sep 2012	22h12m38.73s	-11 44' 26.2"	29.994	29.083	7.8	154.6	0.8	18.11	220.26	3.64	249.5 Aqr
20 Sep 2012	22h12m33.25s	-11 44' 56.8"	29.994	29.091	7.8	153.6	0.9	17.70	221.21	3.59	249.5 Aqr
21 Sep 2012	22h12m27.83s	-11 45' 27.0"	29.994	29.099	7.8	152.6	0.9	17.28	222.14	3.55	249.5 Aqr
22 Sep 2012	22h12m22.48s	-11 45' 56.8"	29.994	29.107	7.8	151.6	0.9	16.85	223.07	3.51	249.5 Aqr
23 Sep 2012	22h12m17.19s	-11 46' 26.3"	29.994	29.116	7.8	150.6	0.9	16.41	224.00	3.46	249.5 Aqr
24 Sep 2012	22h12m11.97s	-11 46' 55.3"	29.994	29.124	7.8	149.6	1.0	15.97	224.91	3.42	249.6 Aqr
25 Sep 2012	22h12m06.82s	-11 47' 23.9"	29.994	29.133	7.8	148.6	1.0	15.52	225.83	3.37	249.6 Aqr
26 Sep 2012	22h12m01.74s	-11 47' 52.1"	29.994	29.143	7.8	147.6	1.0	15.07	226.73	3.32	249.6 Aqr
27 Sep 2012	22h11m56.74s	-11 48' 19.9"	29.994	29.152	7.8	146.6	1.1	14.61	227.63	3.27	249.6 Aqr
28 Sep 2012	22h11m51.81s	-11 48' 47.2"	29.994	29.162	7.8	145.6	1.1	14.14	228.53	3.22	249.6 Aqr
29 Sep 2012	22h11m46.96s	-11 49' 14.0"	29.994	29.172	7.8	144.6	1.1	13.66	229.42	3.17	249.7 Aqr
30 Sep 2012	22h11m42.19s	-11 49' 40.4"	29.994	29.182	7.8	143.6	1.1	13.18	230.30	3.11	249.7 Aqr
1 Okt 2012	22h11m37.50s	-11 50' 06.3"	29.994	29.192	7.8	142.6	1.2	12.70	231.18	3.06	249.7 Aqr
2 Okt 2012	22h11m32.89s	-11 50' 31.8"	29.994	29.203	7.8	141.6	1.2	12.20	232.05	3.00	249.7 Aqr
3 Okt 2012	22h11m28.36s	-11 50' 56.7"	29.994	29.214	7.8	140.6	1.2	11.71	232.92	2.95	249.8 Aqr
4 Okt 2012	22h11m23.93s	-11 51' 21.1"	29.994	29.225	7.8	139.6	1.2	11.20	233.78	2.89	249.8 Aqr
5 Okt 2012	22h11m19.58s	-11 51' 45.0"	29.993	29.237	7.8	138.6	1.3	10.70	234.64	2.83	249.8 Aqr
6 Okt 2012	22h11m15.32s	-11 52' 08.4"	29.993	29.248	7.8	137.6	1.3	10.18	235.49	2.77	249.8 Aqr
7 Okt 2012	22h11m11.16s	-11 52' 31.3"	29.993	29.260	7.8	136.5	1.3	9.67	236.34	2.70	249.9 Aqr
8 Okt 2012	22h11m07.08s	-11 52' 53.6"	29.993	29.272	7.8	135.5	1.3	9.14	237.18	2.64	249.9 Aqr
9 Okt 2012	22h11m03.11s	-11 53' 15.3"	29.993	29.284	7.8	134.5	1.4	8.62	238.02	2.58	249.9 Aqr
10 Okt 2012	22h10m59.23s	-11 53' 36.5"	29.993	29.297	7.8	133.5	1.4	8.09	238.85	2.51	249.9 Aqr
11 Okt 2012	22h10m55.44s	-11 53' 57.2"	29.993	29.309	7.9	132.5	1.4	7.55	239.68	2.45	250.0 Aqr
12 Okt 2012	22h10m51.76s	-11 54' 17.2"	29.993	29.322	7.9	131.5	1.4	7.01	240.50	2.38	250.0 Aqr
13 Okt 2012	22h10m48.19s	-11 54' 36.7"	29.993	29.335	7.9	130.5	1.4	6.47	241.32	2.31	250.0 Aqr
14 Okt 2012	22h10m44.71s	-11 54' 55.5"	29.993	29.349	7.9	129.5	1.5	5.92	242.14	2.24	250.1 Aqr
15 Okt 2012	22h10m41.34s	-11 55' 13.8"	29.993	29.362	7.9	128.5	1.5	5.37	242.95	2.17	250.1 Aqr
16 Okt 2012	22h10m38.08s	-11 55' 31.4"	29.993	29.376	7.9	127.5	1.5	4.82	243.76	2.10	250.2 Aqr
17 Okt 2012	22h10m34.93s	-11 55' 48.4"	29.993	29.390	7.9	126.5	1.5	4.26	244.56	2.02	250.2 Aqr
18 Okt 2012	22h10m31.89s	-11 56' 04.8"	29.993	29.404	7.9	125.5	1.5	3.70	245.36	1.95	250.2 Aqr
19 Okt 2012	22h10m28.96s	-11 56' 20.6"	29.993	29.418	7.9	124.5	1.6	3.13	246.16	1.88	250.3 Aqr
20 Okt 2012	22h10m26.15s	-11 56' 35.7"	29.993	29.432	7.9	123.5	1.6	2.56	246.96	1.80	250.3 Aqr
21 Okt 2012	22h10m23.44s	-11 56' 50.1"	29.993	29.447	7.9	122.5	1.6	1.99	247.75	1.73	250.4 Aqr
22 Okt 2012	22h10m20.86s	-11 57' 04.0"	29.993	29.461	7.9	121.5	1.6	1.42	248.54	1.65	250.5 Aqr

# EPHEMERIDE 2012 – NEPTUN

Datum	RA	Deklination	r	delta	mag	Elong	Phase	Höhe	Az.	Gesch.	PA
23 Okt 2012	22h10m18.39s	-11 57' 17.1"	29.993	29.476	7.9	120.5	1.6	0.84	249.33	1.57	250.5 Aqr
24 Okt 2012	22h10m16.03s	-11 57' 29.6"	29.993	29.491	7.9	119.5	1.7	0.27	250.11	1.49	250.6 Aqr
25 Okt 2012	22h10m13.80s	-11 57' 41.4"	29.993	29.506	7.9	118.4	1.7	-0.32	250.89	1.41	250.7 Aqr
26 Okt 2012	22h10m11.68s	-11 57' 52.6"	29.993	29.522	7.9	117.4	1.7	-0.90	251.67	1.34	250.7 Aqr
27 Okt 2012	22h10m09.69s	-11 58' 03.1"	29.993	29.537	7.9	116.4	1.7	-1.48	252.45	1.26	250.8 Aqr
28 Okt 2012	22h10m07.81s	-11 58' 12.9"	29.993	29.553	7.9	115.4	1.7	-2.07	253.22	1.18	251.0 Aqr
29 Okt 2012	22h10m06.06s	-11 58' 22.0"	29.993	29.568	7.9	114.4	1.7	-2.66	253.99	1.10	251.1 Aqr
30 Okt 2012	22h10m04.43s	-11 58' 30.4"	29.993	29.584	7.9	113.4	1.7	-3.25	254.77	1.01	251.2 Aqr
31 Okt 2012	22h10m02.92s	-11 58' 38.2"	29.993	29.600	7.9	112.4	1.8	-3.84	255.54	0.93	251.4 Aqr
1 Nov 2012	22h10m01.54s	-11 58' 45.2"	29.993	29.616	7.9	111.4	1.8	-4.44	256.30	0.85	251.6 Aqr
2 Nov 2012	22h10m00.28s	-11 58' 51.5"	29.993	29.632	7.9	110.4	1.8	-5.03	257.07	0.77	251.8 Aqr
3 Nov 2012	22h09m59.15s	-11 58' 57.2"	29.993	29.649	7.9	109.4	1.8	-5.63	257.84	0.68	252.1 Aqr
4 Nov 2012	22h09m58.14s	-11 59' 02.1"	29.993	29.665	7.9	108.4	1.8	-6.23	258.60	0.60	252.5 Aqr
5 Nov 2012	22h09m57.26s	-11 59' 06.3"	29.992	29.681	7.9	107.4	1.8	-6.83	259.37	0.52	253.1 Aqr
6 Nov 2012	22h09m56.51s	-11 59' 09.9"	29.992	29.698	7.9	106.4	1.8	-7.43	260.13	0.43	253.8 Aqr
7 Nov 2012	22h09m55.88s	-11 59' 12.6"	29.992	29.714	7.9	105.4	1.8	-8.03	260.90	0.35	254.8 Aqr
8 Nov 2012	22h09m55.39s	-11 59' 14.7"	29.992	29.731	7.9	104.4	1.8	-8.63	261.66	0.26	256.6 Aqr
9 Nov 2012	22h09m55.02s	-11 59' 16.1"	29.992	29.748	7.9	103.4	1.8	-9.24	262.42	0.18	260.1 Aqr
10 Nov 2012	22h09m54.79s	-11 59' 16.7"	29.992	29.765	7.9	102.4	1.8	-9.84	263.19	0.10	269.6 Aqr
11 Nov 2012	22h09m54.68s	-11 59' 16.6"	29.992	29.782	7.9	101.3	1.9	-10.45	263.95	0.03	333.5 Aqr
12 Nov 2012	22h09m54.71s	-11 59' 15.8"	29.992	29.799	7.9	100.3	1.9	-11.05	264.72	0.09	47.8 Aqr
13 Nov 2012	22h09m54.87s	-11 59' 14.2"	29.992	29.816	7.9	99.3	1.9	-11.65	265.48	0.17	58.4 Aqr
14 Nov 2012	22h09m55.15s	-11 59' 11.9"	29.992	29.833	7.9	98.3	1.9	-12.26	266.25	0.26	62.1 Aqr
15 Nov 2012	22h09m55.58s	-11 59' 08.9"	29.992	29.850	7.9	97.3	1.9	-12.86	267.02	0.35	64.0 Aqr
16 Nov 2012	22h09m56.13s	-11 59' 05.1"	29.992	29.867	7.9	96.3	1.9	-13.47	267.78	0.43	65.1 Aqr
17 Nov 2012	22h09m56.82s	-11 59' 00.6"	29.992	29.884	7.9	95.3	1.9	-14.07	268.55	0.52	65.8 Aqr
18 Nov 2012	22h09m57.64s	-11 58' 55.4"	29.992	29.902	7.9	94.3	1.9	-14.68	269.33	0.61	66.4 Aqr
19 Nov 2012	22h09m58.59s	-11 58' 49.4"	29.992	29.919	7.9	93.3	1.9	-15.28	270.10	0.69	66.8 Aqr
20 Nov 2012	22h09m59.67s	-11 58' 42.7"	29.992	29.936	7.9	92.3	1.9	-15.89	270.87	0.78	67.1 Aqr
21 Nov 2012	22h10m00.89s	-11 58' 35.3"	29.992	29.953	7.9	91.3	1.9	-16.49	271.65	0.87	67.3 Aqr
22 Nov 2012	22h10m02.23s	-11 58' 27.1"	29.992	29.971	7.9	90.3	1.9	-17.09	272.43	0.95	67.5 Aqr
23 Nov 2012	22h10m03.71s	-11 58' 18.3"	29.992	29.988	7.9	89.3	1.9	-17.69	273.21	1.04	67.7 Aqr
24 Nov 2012	22h10m05.32s	-11 58' 08.7"	29.992	30.005	7.9	88.3	1.9	-18.29	274.00	1.13	67.8 Aqr
25 Nov 2012	22h10m07.06s	-11 57' 58.4"	29.992	30.022	7.9	87.3	1.9	-18.89	274.78	1.21	68.0 Aqr
26 Nov 2012	22h10m08.93s	-11 57' 47.3"	29.992	30.040	7.9	86.3	1.9	-19.49	275.58	1.30	68.1 Aqr
27 Nov 2012	22h10m10.93s	-11 57' 35.6"	29.992	30.057	7.9	85.3	1.9	-20.09	276.37	1.38	68.2 Aqr
28 Nov 2012	22h10m13.06s	-11 57' 23.1"	29.992	30.074	7.9	84.3	1.9	-20.68	277.17	1.47	68.3 Aqr
29 Nov 2012	22h10m15.32s	-11 57' 09.9"	29.992	30.091	7.9	83.3	1.9	-21.27	277.97	1.55	68.3 Aqr
30 Nov 2012	22h10m17.70s	-11 56' 56.0"	29.992	30.108	7.9	82.3	1.9	-21.87	278.77	1.64	68.4 Aqr
1 Dez 2012	22h10m20.22s	-11 56' 41.4"	29.992	30.126	7.9	81.3	1.9	-22.46	279.58	1.72	68.5 Aqr
2 Dez 2012	22h10m22.86s	-11 56' 26.1"	29.992	30.143	7.9	80.3	1.9	-23.05	280.40	1.81	68.5 Aqr
3 Dez 2012	22h10m25.63s	-11 56' 10.1"	29.992	30.160	7.9	79.3	1.9	-23.63	281.22	1.89	68.6 Aqr
4 Dez 2012	22h10m28.53s	-11 55' 53.3"	29.992	30.177	7.9	78.3	1.8	-24.22	282.04	1.97	68.6 Aqr
5 Dez 2012	22h10m31.56s	-11 55' 35.9"	29.992	30.193	7.9	77.3	1.8	-24.80	282.87	2.06	68.6 Aqr
6 Dez 2012	22h10m34.71s	-11 55' 17.8"	29.992	30.210	7.9	76.3	1.8	-25.38	283.70	2.14	68.7 Aqr
7 Dez 2012	22h10m37.98s	-11 54' 59.0"	29.991	30.227	7.9	75.3	1.8	-25.95	284.54	2.22	68.7 Aqr
8 Dez 2012	22h10m41.38s	-11 54' 39.5"	29.991	30.244	7.9	74.3	1.8	-26.53	285.39	2.30	68.7 Aqr
9 Dez 2012	22h10m44.90s	-11 54' 19.3"	29.991	30.260	7.9	73.3	1.8	-27.10	286.24	2.38	68.8 Aqr
10 Dez 2012	22h10m48.55s	-11 53' 58.5"	29.991	30.277	7.9	72.3	1.8	-27.67	287.09	2.47	68.8 Aqr
11 Dez 2012	22h10m52.32s	-11 53' 37.0"	29.991	30.293	7.9	71.3	1.8	-28.23	287.96	2.55	68.8 Aqr
12 Dez 2012	22h10m56.21s	-11 53' 14.7"	29.991	30.310	7.9	70.3	1.8	-28.80	288.83	2.63	68.9 Aqr
13 Dez 2012	22h11m00.23s	-11 52' 51.9"	29.991	30.326	7.9	69.3	1.8	-29.35	289.70	2.71	68.9 Aqr
14 Dez 2012	22h11m04.36s	-11 52' 28.3"	29.991	30.342	7.9	68.3	1.7	-29.91	290.59	2.78	68.9 Aqr
15 Dez 2012	22h11m08.62s	-11 52' 04.1"	29.991	30.358	7.9	67.3	1.7	-30.46	291.48	2.86	68.9 Aqr
16 Dez 2012	22h11m12.99s	-11 51' 39.3"	29.991	30.374	7.9	66.3	1.7	-31.01	292.38	2.94	68.9 Aqr
17 Dez 2012	22h11m17.47s	-11 51' 13.8"	29.991	30.390	7.9	65.3	1.7	-31.55	293.28	3.02	69.0 Aqr
18 Dez 2012	22h11m22.08s	-11 50' 47.7"	29.991	30.405	7.9	64.3	1.7	-32.09	294.20	3.09	69.0 Aqr
19 Dez 2012	22h11m26.79s	-11 50' 20.9"	29.991	30.421	7.9	63.3	1.7	-32.63	295.12	3.17	69.0 Aqr
20 Dez 2012	22h11m31.62s	-11 49' 53.5"	29.991	30.436	7.9	62.3	1.7	-33.16	296.05	3.24	69.0 Aqr
21 Dez 2012	22h11m36.57s	-11 49' 25.6"	29.991	30.451	7.9	61.3	1.6	-33.68	296.99	3.31	69.0 Aqr
22 Dez 2012	22h11m41.62s	-11 48' 57.0"	29.991	30.467	7.9	60.3	1.6	-34.21	297.94	3.38	69.0 Aqr
23 Dez 2012	22h11m46.78s	-11 48' 27.8"	29.991	30.481	7.9	59.3	1.6	-34.72	298.90	3.46	69.1 Aqr
24 Dez 2012	22h11m52.05s	-11 47' 58.0"	29.991	30.496	7.9	58.3	1.6	-35.23	299.87	3.53	69.1 Aqr
25 Dez 2012	22h11m57.42s	-11 47' 27.6"	29.991	30.511	7.9	57.3	1.6	-35.74	300.85	3.60	69.1 Aqr
26 Dez 2012	22h12m02.90s	-11 46' 56.6"	29.991	30.525	7.9	56.3	1.6	-36.24	301.84	3.66	69.1 Aqr
27 Dez 2012	22h12m08.49s	-11 46' 25.1"	29.991	30.540	7.9	55.3	1.5	-36.73	302.83	3.73	69.1 Aqr
28 Dez 2012	22h12m14.17s	-11 45' 53.0"	29.991	30.554	7.9	54.3	1.5	-37.22	303.84	3.80	69.1 Aqr
29 Dez 2012	22h12m19.96s	-11 45' 20.4"	29.991	30.568	7.9	53.3	1.5	-37.70	304.86	3.87	69.1 Aqr
30 Dez 2012	22h12m25.85s	-11 44' 47.2"	29.991	30.582	7.9	52.3	1.5	-38.18	305.89	3.93	69.1 Aqr
31 Dez 2012	22h12m31.83s	-11 44' 13.4"	29.991	30.595	7.9	51.3	1.5	-38.64	306.93	3.99	69.1 Aqr
1 Jan 2013	22h12m37.91s	-11 43' 39.1"	29.991	30.609	7.9	50.3	1.4	-39.11	307.99	4.06	69.1 Aqr