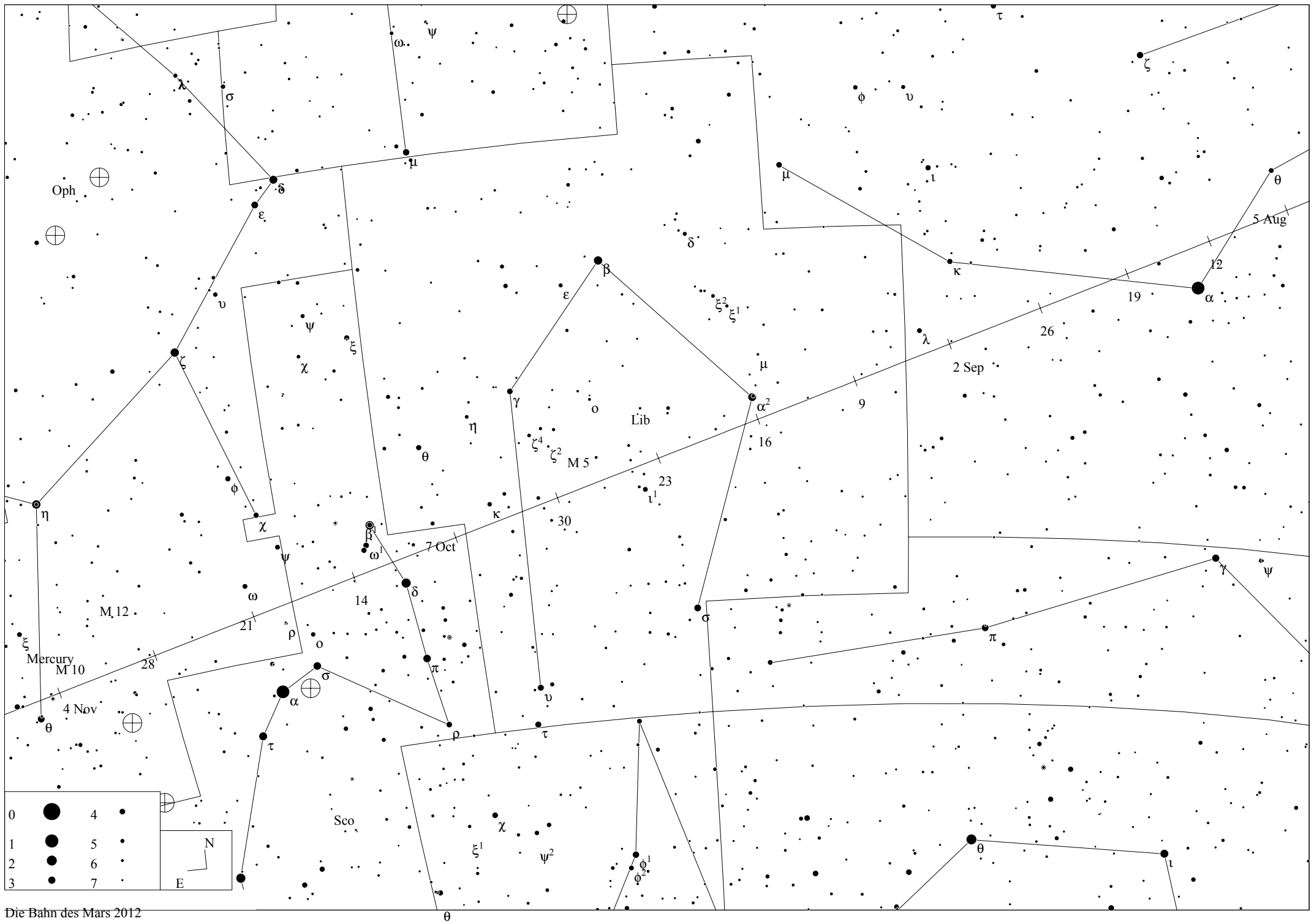
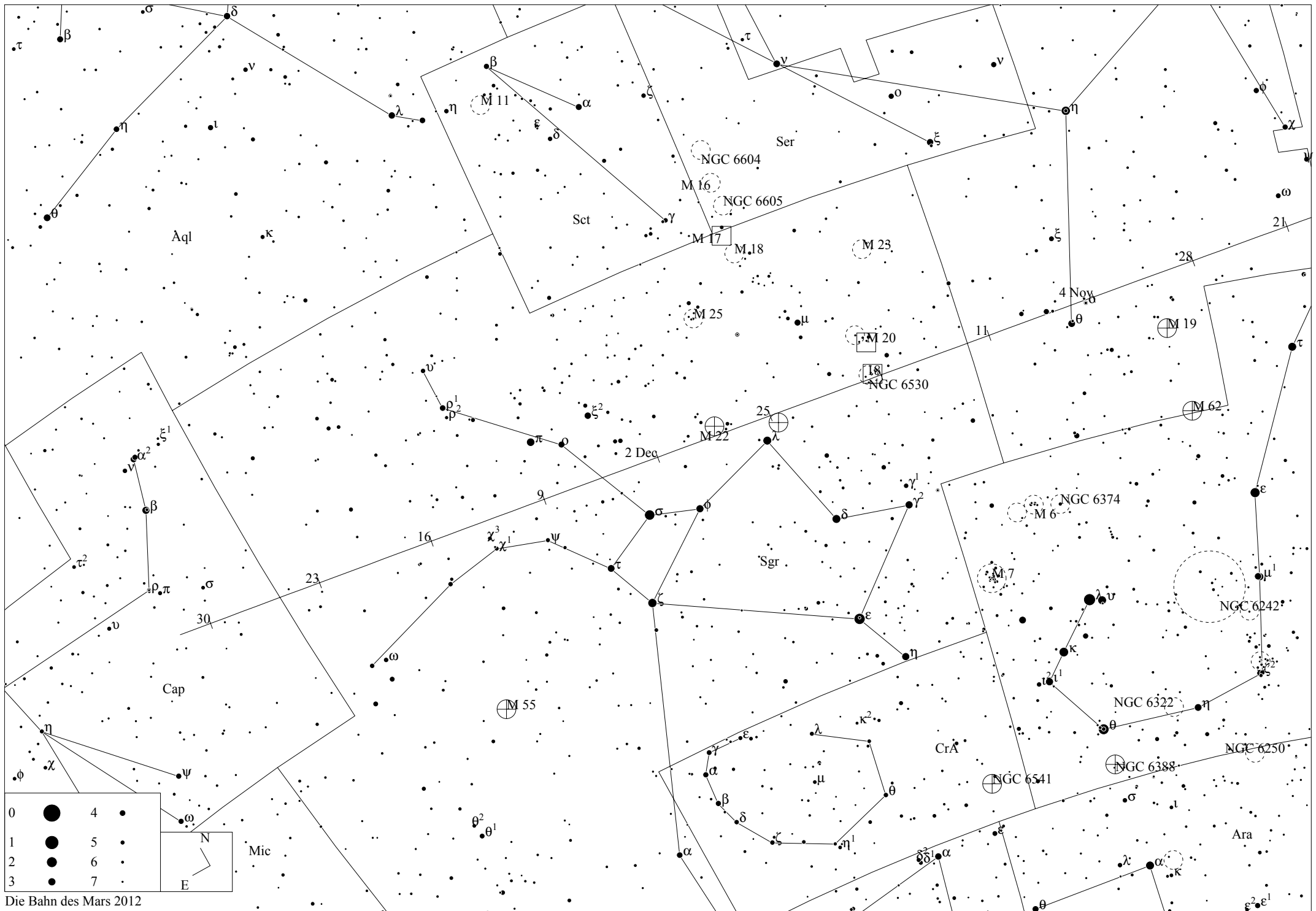


Die Bahn des Mars 2012



Die Bahn des Mars 2012



EPHEMERIDE 2012 – MARS

Datum	RA	Deklination	r	delta	mag	Elong	Phase	Höhe	Az.	Gesch.	PA
1 Jan 2012	11h27m40.26s	+06 41' 13.1"	1.6556	1.0395	0.2	109.8	34.0	24.46	112.06	35.53	106.9 Leo
2 Jan 2012	11h28m35.51s	+06 37' 07.6"	1.6560	1.0306	0.2	110.6	33.8	24.84	112.78	34.25	106.7 Leo
3 Jan 2012	11h29m28.88s	+06 33' 14.6"	1.6565	1.0217	0.2	111.4	33.6	25.22	113.50	32.95	106.4 Leo
4 Jan 2012	11h30m20.32s	+06 29' 34.3"	1.6569	1.0129	0.1	112.2	33.3	25.60	114.24	31.63	106.1 Leo
5 Jan 2012	11h31m09.80s	+06 26' 06.9"	1.6573	1.0041	0.1	113.0	33.1	25.99	114.99	30.28	105.8 Leo
6 Jan 2012	11h31m57.29s	+06 22' 52.8"	1.6577	0.9954	0.1	113.8	32.9	26.39	115.74	28.90	105.4 Leo
7 Jan 2012	11h32m42.74s	+06 19' 52.1"	1.6581	0.9867	0.1	114.6	32.6	26.78	116.51	27.51	105.0 Leo
8 Jan 2012	11h33m26.12s	+06 17' 05.2"	1.6585	0.9780	0.0	115.5	32.4	27.19	117.29	26.08	104.5 Leo
9 Jan 2012	11h34m07.39s	+06 14' 32.3"	1.6589	0.9694	0.0	116.3	32.1	27.60	118.08	24.63	104.0 Leo
10 Jan 2012	11h34m46.51s	+06 12' 13.6"	1.6592	0.9609	0.0	117.2	31.8	28.01	118.87	23.16	103.4 Leo
11 Jan 2012	11h35m23.43s	+06 10' 09.4"	1.6596	0.9524	-0.0	118.0	31.5	28.43	119.69	21.65	102.7 Leo
12 Jan 2012	11h35m58.10s	+06 08' 20.0"	1.6600	0.9440	-0.0	118.9	31.2	28.85	120.51	20.12	101.8 Leo
13 Jan 2012	11h36m30.50s	+06 06' 45.7"	1.6603	0.9356	-0.1	119.8	30.9	29.28	121.34	18.57	100.9 Leo
14 Jan 2012	11h37m00.56s	+06 05' 26.7"	1.6606	0.9273	-0.1	120.7	30.6	29.71	122.19	16.99	99.7 Leo
15 Jan 2012	11h37m28.24s	+06 04' 23.3"	1.6609	0.9190	-0.1	121.6	30.3	30.15	123.05	15.39	98.2 Vir
16 Jan 2012	11h37m53.50s	+06 03' 35.7"	1.6612	0.9108	-0.1	122.5	30.0	30.59	123.93	13.76	96.4 Vir
17 Jan 2012	11h38m16.28s	+06 03' 04.2"	1.6616	0.9027	-0.2	123.4	29.6	31.04	124.82	12.13	94.1 Vir
18 Jan 2012	11h38m36.54s	+06 02' 49.1"	1.6618	0.8947	-0.2	124.3	29.3	31.49	125.73	10.49	91.0 Vir
19 Jan 2012	11h38m54.23s	+06 02' 50.5"	1.6621	0.8868	-0.2	125.3	28.9	31.94	126.65	8.87	86.7 Vir
20 Jan 2012	11h39m09.31s	+06 03' 08.6"	1.6624	0.8789	-0.2	126.3	28.5	32.40	127.59	7.29	80.4 Vir
21 Jan 2012	11h39m21.73s	+06 03' 43.7"	1.6627	0.8711	-0.3	127.2	28.1	32.86	128.55	5.83	70.7 Vir
22 Jan 2012	11h39m31.47s	+06 04' 35.8"	1.6629	0.8634	-0.3	128.2	27.7	33.33	129.52	4.62	55.2 Vir
23 Jan 2012	11h39m38.48s	+06 05' 45.1"	1.6631	0.8558	-0.3	129.2	27.3	33.79	130.52	3.93	31.5 Vir
24 Jan 2012	11h39m42.72s	+06 07' 11.7"	1.6634	0.8484	-0.3	130.2	26.9	34.26	131.53	4.08	4.2 Vir
25 Jan 2012	11h39m44.17s	+06 08' 55.6"	1.6636	0.8410	-0.4	131.2	26.4	34.74	132.56	5.02	342.9 Vir
26 Jan 2012	11h39m42.80s	+06 10' 56.9"	1.6638	0.8337	-0.4	132.3	26.0	35.22	133.62	6.41	329.4 Vir
27 Jan 2012	11h39m38.58s	+06 13' 15.7"	1.6640	0.8265	-0.4	133.3	25.5	35.69	134.69	8.04	321.0 Vir
28 Jan 2012	11h39m31.48s	+06 15' 51.9"	1.6642	0.8195	-0.4	134.4	25.0	36.17	135.79	9.80	315.4 Vir
29 Jan 2012	11h39m21.50s	+06 18' 45.5"	1.6644	0.8125	-0.5	135.4	24.5	36.65	136.91	11.63	311.5 Vir
30 Jan 2012	11h39m08.60s	+06 21' 56.6"	1.6646	0.8057	-0.5	136.5	24.0	37.14	138.06	13.50	308.6 Vir
31 Jan 2012	11h38m52.77s	+06 25' 25.0"	1.6647	0.7990	-0.5	137.6	23.5	37.62	139.23	15.41	306.4 Vir
1 Feb 2012	11h38m41.01s	+06 29' 10.7"	1.6649	0.7925	-0.6	138.7	23.0	38.10	140.42	17.33	304.6 Vir
2 Feb 2012	11h38m12.29s	+06 33' 13.6"	1.6650	0.7860	-0.6	139.8	22.5	38.58	141.64	19.27	303.2 Vir
3 Feb 2012	11h37m47.61s	+06 37' 33.4"	1.6652	0.7798	-0.6	140.9	21.9	39.05	142.89	21.22	302.1 Vir
4 Feb 2012	11h37m19.98s	+06 42' 10.2"	1.6653	0.7736	-0.6	142.1	21.3	39.53	144.17	23.17	301.1 Leo
5 Feb 2012	11h36m49.38s	+06 47' 03.5"	1.6654	0.7676	-0.7	143.2	20.8	40.00	145.47	25.12	300.2 Leo
6 Feb 2012	11h36m15.83s	+06 52' 13.4"	1.6655	0.7618	-0.7	144.4	20.2	40.47	146.81	27.06	299.5 Leo
7 Feb 2012	11h35m39.33s	+06 57' 39.4"	1.6656	0.7561	-0.7	145.6	19.6	40.93	148.17	29.00	298.9 Leo
8 Feb 2012	11h34m59.89s	+07 03' 21.3"	1.6657	0.7505	-0.7	146.8	18.9	41.39	149.57	30.92	298.3 Leo
9 Feb 2012	11h34m17.52s	+07 09' 18.7"	1.6657	0.7452	-0.8	148.0	18.3	41.84	151.00	32.84	297.7 Leo
10 Feb 2012	11h33m32.25s	+07 15' 31.4"	1.6658	0.7399	-0.8	149.2	17.7	42.28	152.45	34.73	297.3 Leo
11 Feb 2012	11h32m44.10s	+07 21' 59.0"	1.6659	0.7349	-0.8	150.4	17.0	42.71	153.95	36.60	296.8 Leo
12 Feb 2012	11h31m53.09s	+07 28' 40.8"	1.6659	0.7300	-0.8	151.6	16.3	43.13	155.47	38.44	296.4 Leo
13 Feb 2012	11h30m59.27s	+07 35' 36.6"	1.6659	0.7253	-0.9	152.9	15.7	43.55	157.03	40.25	296.0 Leo
14 Feb 2012	11h30m02.68s	+07 42' 45.7"	1.6660	0.7208	-0.9	154.1	15.0	43.95	158.62	42.03	295.7 Leo
15 Feb 2012	11h29m03.37s	+07 50' 07.4"	1.6660	0.7165	-0.9	155.4	14.3	44.33	160.24	43.75	295.3 Leo
16 Feb 2012	11h28m01.39s	+07 57' 41.2"	1.6660	0.7124	-0.9	156.7	13.6	44.71	161.90	45.43	295.0 Leo
17 Feb 2012	11h26m56.83s	+08 05' 26.3"	1.6660	0.7084	-1.0	158.0	12.9	45.06	163.59	47.06	294.7 Leo
18 Feb 2012	11h25m49.76s	+08 13' 21.8"	1.6660	0.7047	-1.0	159.2	12.1	45.40	165.31	48.61	294.4 Leo
19 Feb 2012	11h24m40.26s	+08 21' 27.0"	1.6659	0.7011	-1.0	160.5	11.4	45.72	167.06	50.10	294.1 Leo
20 Feb 2012	11h23m28.45s	+08 29' 41.0"	1.6659	0.6978	-1.0	161.8	10.7	46.02	168.85	51.52	293.8 Leo
21 Feb 2012	11h22m14.41s	+08 38' 02.7"	1.6659	0.6946	-1.0	163.1	9.9	46.30	170.66	52.85	293.5 Leo
22 Feb 2012	11h21m08.28s	+08 46' 31.2"	1.6658	0.6917	-1.1	164.4	9.2	46.56	172.50	54.10	293.2 Leo
23 Feb 2012	11h19m40.18s	+08 55' 05.5"	1.6657	0.6890	-1.1	165.7	8.4	46.80	174.37	55.25	292.9 Leo
24 Feb 2012	11h18m20.22s	+09 03' 44.5"	1.6657	0.6865	-1.1	167.0	7.7	47.01	176.27	56.31	292.6 Leo
25 Feb 2012	11h16m58.56s	+09 12' 27.1"	1.6656	0.6842	-1.1	168.3	6.9	47.19	178.18	57.27	292.4 Leo
26 Feb 2012	11h15m35.34s	+09 21' 12.4"	1.6655	0.6821	-1.1	169.6	6.2	47.35	180.12	58.13	292.1 Leo
27 Feb 2012	11h14m10.70s	+09 29' 59.1"	1.6654	0.6803	-1.2	170.8	5.4	47.48	182.07	58.88	291.8 Leo
28 Feb 2012	11h12m44.80s	+09 38' 46.2"	1.6653	0.6787	-1.2	172.1	4.7	47.58	184.04	59.53	291.6 Leo
29 Feb 2012	11h11m17.79s	+09 47' 32.5"	1.6651	0.6773	-1.2	173.2	4.0	47.66	186.02	60.06	291.3 Leo
1 Mär 2012	11h09m49.85s	+09 56' 17.0"	1.6650	0.6761	-1.2	174.2	3.4	47.70	188.01	60.48	291.0 Leo
2 Mär 2012	11h08m21.12s	+10 04' 58.6"	1.6648	0.6752	-1.2	175.1	2.9	47.71	190.01	60.80	290.8 Leo
3 Mär 2012	11h06m51.79s	+10 13' 36.2"	1.6647	0.6745	-1.2	175.7	2.6	47.70	192.00	60.99	290.5 Leo
4 Mär 2012	11h05m22.01s	+10 22' 08.7"	1.6645	0.6740	-1.2	175.8	2.5	47.65	194.00	61.08	290.2 Leo
5 Mär 2012	11h03m51.95s	+10 30' 35.1"	1.6643	0.6737	-1.2	175.5	2.7	47.57	195.99	61.05	290.0 Leo
6 Mär 2012	11h02m21.78s	+10 38' 54.5"	1.6642	0.6737	-1.2	174.9	3.1	47.46	197.98	60.92	289.7 Leo
7 Mär 2012	11h00m51.67s	+10 47' 05.8"	1.6640	0.6738	-1.2	174.0	3.6	47.32	199.96	60.67	289.4 Leo
8 Mär 2012	10h59m21.78s	+10 55' 08.1"	1.6638	0.6742	-1.2	172.9	4.2	47.15	201.92	60.32	289.1 Leo
9 Mär 2012	10h57m52.27s	+11 03' 00.6"	1.6636	0.6749	-1.2	171.7	4.9	46.96	203.86	59.87	288.8 Leo
10 Mär 2012	10h56m23.30s	+11 10' 42.4"	1.6633	0.6757	-1.2	170.5	5.7	46.73	205.79	59.31	288.5 Leo
11 Mär 2012	10h54m55.04s	+11 18' 12.6"	1.6631	0.6768	-1.2	169.3	6.4	46.47	207.69	58.65	288.2 Leo
12 Mär 2012	10h53m27.62s	+11 25' 30.6"	1.6628	0.6780	-1.1	168.0	7.2	46.19	209.58	57.89	287.9 Leo
13 Mär 2012	10h52m01.22s	+11 32' 35.4"	1.6626	0.6795	-1.1	166.7	7.9	45.88	211.43	57.03	287.6 Leo
14 Mär 2012	10h50m35.98s	+11 39' 26.5"	1.6623	0.6812	-1.1	165.4	8.7	45.55	213.26	56.08	287.2 Leo

EPHEMERIDE 2012 – MARS

Datum	RA	Deklination	r	delta	mag	Elong	Phase	Höhe	Az.	Gesch.	PA	
15 Mär 2012	10h49m12.05s	+11 46' 03.0"	1.6621	0.6831	-1.1	164.1	9.4	45.19	215.05	55.03	286.9	Leo
16 Mär 2012	10h47m49.58s	+11 52' 24.4"	1.6618	0.6853	-1.1	162.8	10.2	44.81	216.82	53.89	286.5	Leo
17 Mär 2012	10h46m28.73s	+11 58' 30.1"	1.6615	0.6876	-1.1	161.5	11.0	44.40	218.55	52.67	286.1	Leo
18 Mär 2012	10h45m09.61s	+12 04' 19.4"	1.6612	0.6901	-1.0	160.2	11.7	43.98	220.25	51.36	285.8	Leo
19 Mär 2012	10h43m52.38s	+12 09' 51.8"	1.6609	0.6929	-1.0	158.9	12.5	43.53	221.91	49.97	285.3	Leo
20 Mär 2012	10h42m37.16s	+12 15' 07.0"	1.6605	0.6958	-1.0	157.6	13.2	43.07	223.54	48.50	284.9	Leo
21 Mär 2012	10h41m24.07s	+12 20' 04.5"	1.6602	0.6989	-1.0	156.3	13.9	42.58	225.14	46.97	284.5	Leo
22 Mär 2012	10h40m13.22s	+12 24' 44.0"	1.6599	0.7022	-1.0	155.1	14.7	42.09	226.69	45.37	284.0	Leo
23 Mär 2012	10h39m04.73s	+12 29' 05.1"	1.6595	0.7057	-0.9	153.8	15.4	41.57	228.21	43.71	283.5	Leo
24 Mär 2012	10h37m58.68s	+12 33' 07.7"	1.6592	0.7094	-0.9	152.6	16.1	41.05	229.70	42.00	282.9	Leo
25 Mär 2012	10h36m55.18s	+12 36' 51.6"	1.6588	0.7133	-0.9	151.3	16.8	40.51	231.14	40.25	282.4	Leo
26 Mär 2012	10h35m54.30s	+12 40' 16.6"	1.6584	0.7173	-0.9	150.1	17.5	39.96	232.56	38.45	281.7	Leo
27 Mär 2012	10h34m56.11s	+12 43' 22.8"	1.6580	0.7215	-0.8	148.9	18.1	39.39	233.93	36.62	281.1	Leo
28 Mär 2012	10h34m00.68s	+12 46' 09.9"	1.6576	0.7259	-0.8	147.7	18.8	38.82	235.27	34.75	280.3	Leo
29 Mär 2012	10h33m08.06s	+12 48' 38.1"	1.6572	0.7304	-0.8	146.5	19.4	38.24	236.58	32.87	279.5	Leo
30 Mär 2012	10h32m13.31s	+12 50' 47.5"	1.6568	0.7351	-0.8	145.3	20.1	37.65	237.86	30.97	278.6	Leo
31 Mär 2012	10h31m31.45s	+12 52' 38.0"	1.6564	0.7399	-0.7	144.1	20.7	37.06	239.10	29.05	277.6	Leo
1 Apr 2012	10h30m47.53s	+12 54' 09.9"	1.6559	0.7449	-0.7	143.0	21.3	36.46	240.31	27.14	276.5	Leo
2 Apr 2012	10h30m06.56s	+12 55' 23.2"	1.6555	0.7500	-0.7	141.8	21.9	35.85	241.48	25.22	275.3	Leo
3 Apr 2012	10h29m54.30s	+12 56' 18.2"	1.6550	0.7553	-0.7	140.7	22.5	35.24	242.63	23.31	273.8	Leo
4 Apr 2012	10h28m53.56s	+12 56' 55.1"	1.6546	0.7607	-0.7	139.6	23.1	34.63	243.75	21.42	272.1	Leo
5 Apr 2012	10h28m21.53s	+12 57' 14.0"	1.6541	0.7662	-0.6	138.5	23.6	34.01	244.84	19.54	270.2	Leo
6 Apr 2012	10h27m52.49s	+12 57' 15.3"	1.6536	0.7718	-0.6	137.4	24.2	33.39	245.90	17.71	267.8	Leo
7 Apr 2012	10h27m26.42s	+12 56' 59.2"	1.6531	0.7776	-0.6	136.3	24.7	32.77	246.93	15.91	265.0	Leo
8 Apr 2012	10h27m03.31s	+12 56' 25.9"	1.6526	0.7835	-0.6	135.3	25.2	32.15	247.94	14.17	261.4	Leo
9 Apr 2012	10h26m43.16s	+12 55' 35.6"	1.6521	0.7895	-0.5	134.2	25.8	31.52	248.92	12.50	257.0	Leo
10 Apr 2012	10h26m25.93s	+12 54' 28.7"	1.6516	0.7956	-0.5	133.2	26.3	30.90	249.88	10.94	251.3	Leo
11 Apr 2012	10h26m11.63s	+12 53' 05.3"	1.6510	0.8018	-0.5	132.2	26.7	30.27	250.82	9.53	244.0	Leo
12 Apr 2012	10h26m00.22s	+12 51' 25.7"	1.6505	0.8081	-0.5	131.2	27.2	29.65	251.73	8.33	234.3	Leo
13 Apr 2012	10h25m51.69s	+12 49' 30.1"	1.6499	0.8145	-0.4	130.2	27.7	29.02	252.62	7.43	222.1	Leo
14 Apr 2012	10h25m46.02s	+12 47' 18.7"	1.6494	0.8210	-0.4	129.2	28.1	28.40	253.49	6.96	207.6	Leo
15 Apr 2012	10h25m43.19s	+12 44' 51.7"	1.6488	0.8276	-0.4	128.2	28.6	27.77	254.34	6.96	192.1	Leo
16 Apr 2012	10h25m43.16s	+12 42' 09.4"	1.6482	0.8343	-0.4	127.2	29.0	27.15	255.16	7.45	177.9	Leo
17 Apr 2012	10h25m45.92s	+12 39' 12.0"	1.6476	0.8411	-0.3	126.3	29.4	26.53	255.97	8.30	166.1	Leo
18 Apr 2012	10h25m51.42s	+12 35' 59.7"	1.6470	0.8479	-0.3	125.4	29.8	25.91	256.76	9.43	157.0	Leo
19 Apr 2012	10h25m59.64s	+12 32' 32.8"	1.6464	0.8549	-0.3	124.4	30.2	25.29	257.54	10.72	150.0	Leo
20 Apr 2012	10h25m10.55s	+12 28' 51.5"	1.6458	0.8619	-0.3	123.5	30.6	24.68	258.29	12.11	144.6	Leo
21 Apr 2012	10h26m24.10s	+12 24' 56.0"	1.6452	0.8689	-0.2	122.6	31.0	24.07	259.03	13.57	140.4	Leo
22 Apr 2012	10h26m40.26s	+12 20' 46.7"	1.6446	0.8761	-0.2	121.7	31.3	23.45	259.75	15.06	137.0	Leo
23 Apr 2012	10h26m58.98s	+12 16' 23.7"	1.6439	0.8833	-0.2	120.9	31.7	22.85	260.46	16.57	134.3	Leo
24 Apr 2012	10h27m20.24s	+12 11' 47.3"	1.6433	0.8905	-0.2	120.0	32.0	22.24	261.15	18.09	132.1	Leo
25 Apr 2012	10h27m43.97s	+12 06' 57.8"	1.6426	0.8979	-0.2	119.1	32.3	21.64	261.83	19.59	130.3	Leo
26 Apr 2012	10h28m10.15s	+12 01' 55.4"	1.6420	0.9052	-0.1	118.3	32.7	21.04	262.49	21.09	128.7	Leo
27 Apr 2012	10h28m38.72s	+11 56' 40.3"	1.6413	0.9127	-0.1	117.5	33.0	20.44	263.14	22.58	127.4	Leo
28 Apr 2012	10h29m09.63s	+11 51' 12.9"	1.6406	0.9201	-0.1	116.7	33.3	19.84	263.77	24.04	126.3	Leo
29 Apr 2012	10h29m42.84s	+11 45' 33.2"	1.6399	0.9277	-0.1	115.8	33.6	19.25	264.40	25.49	125.3	Leo
30 Apr 2012	10h30m18.31s	+11 39' 41.7"	1.6392	0.9352	-0.1	115.0	33.8	18.66	265.01	26.91	124.4	Leo
1 Mai 2012	10h30m55.97s	+11 33' 38.5"	1.6385	0.9428	-0.0	114.3	34.1	18.07	265.61	28.31	123.6	Leo
2 Mai 2012	10h31m35.79s	+11 27' 23.8"	1.6378	0.9505	-0.0	113.5	34.4	17.48	266.20	29.68	123.0	Leo
3 Mai 2012	10h32m17.71s	+11 20' 58.0"	1.6370	0.9581	0.0	112.7	34.6	16.90	266.77	31.02	122.4	Leo
4 Mai 2012	10h33m01.69s	+11 14' 21.2"	1.6363	0.9659	0.0	111.9	34.9	16.32	267.34	32.34	121.8	Leo
5 Mai 2012	10h33m47.67s	+11 07' 33.6"	1.6356	0.9736	0.1	111.2	35.1	15.74	267.90	33.63	121.3	Leo
6 Mai 2012	10h34m35.60s	+11 00' 35.4"	1.6348	0.9814	0.1	110.5	35.3	15.17	268.45	34.90	120.9	Leo
7 Mai 2012	10h35m25.45s	+10 53' 26.9"	1.6340	0.9892	0.1	109.7	35.5	14.60	268.98	36.14	120.5	Leo
8 Mai 2012	10h36m17.18s	+10 46' 08.3"	1.6333	0.9970	0.1	109.0	35.8	14.03	269.51	37.36	120.1	Leo
9 Mai 2012	10h37m10.73s	+10 38' 39.5"	1.6325	1.0048	0.1	108.3	36.0	13.46	270.03	38.55	119.8	Leo
10 Mai 2012	10h38m06.07s	+10 31' 00.9"	1.6317	1.0127	0.1	107.6	36.2	12.90	270.54	39.73	119.5	Leo
11 Mai 2012	10h39m03.16s	+10 23' 12.6"	1.6309	1.0206	0.2	106.9	36.3	12.33	271.05	40.88	119.2	Leo
12 Mai 2012	10h40m01.98s	+10 15' 14.6"	1.6301	1.0285	0.2	106.2	36.5	11.77	271.54	42.02	119.0	Leo
13 Mai 2012	10h41m02.48s	+10 07' 07.2"	1.6293	1.0364	0.2	105.5	36.7	11.21	272.03	43.13	118.8	Leo
14 Mai 2012	10h42m04.63s	+09 58' 50.4"	1.6285	1.0443	0.2	104.8	36.9	10.66	272.51	44.23	118.5	Leo
15 Mai 2012	10h43m08.41s	+09 50' 24.3"	1.6277	1.0523	0.2	104.1	37.0	10.11	272.99	45.30	118.3	Leo
16 Mai 2012	10h44m13.77s	+09 41' 49.2"	1.6268	1.0602	0.3	103.5	37.2	9.56	273.45	46.36	118.2	Leo
17 Mai 2012	10h45m20.69s	+09 33' 05.1"	1.6260	1.0682	0.3	102.8	37.3	9.01	273.91	47.40	118.0	Leo
18 Mai 2012	10h46m29.13s	+09 24' 12.2"	1.6251	1.0762	0.3	102.2	37.5	8.46	274.37	48.42	117.8	Leo
19 Mai 2012	10h47m39.07s	+09 15' 10.5"	1.6243	1.0842	0.3	101.5	37.6	7.92	274.81	49.42	117.7	Leo
20 Mai 2012	10h48m50.46s	+09 06' 00.3"	1.6234	1.0921	0.3	100.9	37.7	7.37	275.25	50.40	117.6	Leo
21 Mai 2012	10h50m03.29s	+08 56' 41.6"	1.6225	1.1001	0.3	100.3	37.9	6.83	275.69	51.36	117.4	Leo
22 Mai 2012	10h51m17.52s	+08 47' 14.6"	1.6216	1.1081	0.4	99.7	38.0	6.29	276.12	52.31	117.3	Leo
23 Mai 2012	10h52m33.12s	+08 37' 39.5"	1.6207	1.1161	0.4	99.1	38.1	5.76	276.54	53.23	117.2	Leo
24 Mai 2012	10h53m50.05s	+08 27' 56.3"	1.6198	1.1241	0.4	98.5	38.2	5.22	276.96	54.14	117.1	Leo
25 Mai 2012	10h55m08.30s	+08 18' 05.2"	1.6189	1.1321	0.4	97.9	38.3	4.69	277.37	55.03	117.0	Leo
26 Mai 2012	10h56m27.82s	+08 08' 06.3"	1.6180	1.1401	0.4	97.3	38.4	4.16	277.78	55.90	116.9	Leo
27 Mai 2012	10h57m48.59s	+07 57' 59.8"	1.6171	1.1481	0.4	96.7	38.5	3.63	278.18	56.75	116.8	Leo

EPHEMERIDE 2012 – MARS

Datum	RA	Deklination	r	delta	mag	Elong	Phase	Höhe	Az.	Gesch.	PA
28 Mai 2012	10h59m10.59s	+07 47' 45.8"	1.6162	1.1561	0.5	96.1	38.6	3.10	278.58	57.58	116.7 Leo
29 Mai 2012	11h00m33.77s	+07 37' 24.5"	1.6152	1.1640	0.5	95.5	38.7	2.58	278.98	58.39	116.7 Leo
30 Mai 2012	11h01m58.11s	+07 26' 56.0"	1.6143	1.1720	0.5	94.9	38.7	2.05	279.37	59.19	116.6 Leo
31 Mai 2012	11h03m23.59s	+07 16' 20.3"	1.6133	1.1799	0.5	94.4	38.8	1.53	279.75	59.96	116.5 Leo
1 Jun 2012	11h04m50.17s	+07 05' 37.8"	1.6124	1.1879	0.5	93.8	38.9	1.01	280.13	60.72	116.5 Leo
2 Jun 2012	11h06m17.83s	+06 54' 48.4"	1.6114	1.1958	0.5	93.3	38.9	0.49	280.51	61.46	116.4 Leo
3 Jun 2012	11h07m46.54s	+06 43' 52.4"	1.6105	1.2037	0.5	92.7	39.0	-0.03	280.88	62.19	116.4 Leo
4 Jun 2012	11h09m16.28s	+06 32' 49.7"	1.6095	1.2116	0.6	92.2	39.0	-0.54	281.25	62.90	116.3 Leo
5 Jun 2012	11h10m47.02s	+06 21' 40.6"	1.6085	1.2195	0.6	91.6	39.1	-1.06	281.62	63.60	116.3 Leo
6 Jun 2012	11h12m18.75s	+06 10' 25.2"	1.6075	1.2274	0.6	91.1	39.1	-1.57	281.98	64.28	116.2 Leo
7 Jun 2012	11h13m51.44s	+05 59' 03.5"	1.6065	1.2352	0.6	90.6	39.2	-2.08	282.34	64.95	116.2 Leo
8 Jun 2012	11h15m25.09s	+05 47' 35.5"	1.6055	1.2431	0.6	90.0	39.2	-2.59	282.70	65.62	116.1 Leo
9 Jun 2012	11h16m59.67s	+05 36' 01.5"	1.6045	1.2509	0.6	89.5	39.2	-3.10	283.05	66.27	116.1 Leo
10 Jun 2012	11h18m35.17s	+05 24' 21.4"	1.6035	1.2587	0.6	89.0	39.3	-3.61	283.40	66.91	116.1 Leo
11 Jun 2012	11h20m11.58s	+05 12' 35.4"	1.6024	1.2665	0.6	88.5	39.3	-4.12	283.75	67.55	116.0 Leo
12 Jun 2012	11h21m48.88s	+05 00' 43.5"	1.6014	1.2743	0.7	88.0	39.3	-4.62	284.09	68.17	116.0 Leo
13 Jun 2012	11h23m27.06s	+04 48' 45.8"	1.6003	1.2820	0.7	87.5	39.3	-5.13	284.43	68.79	116.0 Leo
14 Jun 2012	11h25m06.12s	+04 36' 42.4"	1.5993	1.2898	0.7	87.0	39.4	-5.63	284.77	69.39	115.9 Leo
15 Jun 2012	11h26m46.02s	+04 24' 33.4"	1.5982	1.2975	0.7	86.5	39.4	-6.13	285.11	69.99	115.9 Leo
16 Jun 2012	11h28m25.77s	+04 12' 18.8"	1.5972	1.3052	0.7	86.0	39.4	-6.63	285.44	70.58	115.9 Leo
17 Jun 2012	11h30m08.35s	+03 59' 58.9"	1.5961	1.3128	0.7	85.5	39.4	-7.13	285.77	71.16	115.8 Leo
18 Jun 2012	11h31m50.75s	+03 47' 33.6"	1.5950	1.3205	0.7	85.0	39.4	-7.63	286.10	71.73	115.8 Leo
19 Jun 2012	11h33m33.96s	+03 35' 03.2"	1.5940	1.3281	0.7	84.6	39.4	-8.13	286.43	72.29	115.8 Leo
20 Jun 2012	11h35m17.96s	+03 22' 27.5"	1.5929	1.3357	0.7	84.1	39.4	-8.62	286.75	72.84	115.8 Leo
21 Jun 2012	11h37m02.74s	+03 09' 46.9"	1.5918	1.3433	0.8	83.6	39.4	-9.12	287.07	73.39	115.7 Leo
22 Jun 2012	11h38m48.30s	+02 57' 01.4"	1.5907	1.3508	0.8	83.2	39.4	-9.61	287.39	73.92	115.7 Vir
23 Jun 2012	11h40m34.61s	+02 44' 11.0"	1.5896	1.3584	0.8	82.7	39.4	-10.10	287.71	74.44	115.7 Vir
24 Jun 2012	11h42m21.67s	+02 31' 16.0"	1.5885	1.3659	0.8	82.2	39.3	-10.59	288.02	74.96	115.6 Vir
25 Jun 2012	11h44m09.47s	+02 18' 16.4"	1.5874	1.3733	0.8	81.8	39.3	-11.08	288.34	75.46	115.6 Vir
26 Jun 2012	11h45m57.98s	+02 05' 12.4"	1.5863	1.3808	0.8	81.3	39.3	-11.57	288.65	75.96	115.6 Vir
27 Jun 2012	11h47m47.21s	+01 52' 04.0"	1.5851	1.3882	0.8	80.9	39.3	-12.06	288.96	76.44	115.5 Vir
28 Jun 2012	11h49m37.14s	+01 38' 51.4"	1.5840	1.3956	0.8	80.4	39.3	-12.54	289.26	76.92	115.5 Vir
29 Jun 2012	11h51m27.75s	+01 25' 34.7"	1.5829	1.4029	0.8	80.0	39.2	-13.03	289.57	77.38	115.5 Vir
30 Jun 2012	11h53m19.04s	+01 12' 14.0"	1.5817	1.4102	0.8	79.5	39.2	-13.51	289.87	77.84	115.5 Vir
1 Jul 2012	11h55m11.00s	+00 58' 49.4"	1.5806	1.4175	0.9	79.1	39.2	-14.00	290.18	78.29	115.4 Vir
2 Jul 2012	11h57m03.61s	+00 45' 21.1"	1.5794	1.4248	0.9	78.7	39.1	-14.48	290.48	78.73	115.4 Vir
3 Jul 2012	11h58m56.87s	+00 31' 49.1"	1.5783	1.4320	0.9	78.2	39.1	-14.96	290.78	79.17	115.4 Vir
4 Jul 2012	12h00m50.77s	+00 18' 13.6"	1.5771	1.4392	0.9	77.8	39.1	-15.44	291.07	79.59	115.3 Vir
5 Jul 2012	12h02m45.31s	+00 04' 34.5"	1.5759	1.4464	0.9	77.4	39.0	-15.92	291.37	80.02	115.3 Vir
6 Jul 2012	12h04m40.40s	-00 09' 07.8"	1.5748	1.4535	0.9	77.0	39.0	-16.39	291.66	80.44	115.3 Vir
7 Jul 2012	12h06m36.28s	-00 22' 53.5"	1.5736	1.4606	0.9	76.5	38.9	-16.87	291.96	80.85	115.2 Vir
8 Jul 2012	12h08m32.71s	-00 36' 42.4"	1.5724	1.4677	0.9	76.1	38.9	-17.35	292.25	81.26	115.2 Vir
9 Jul 2012	12h10m29.76s	-00 50' 34.5"	1.5712	1.4747	0.9	75.7	38.8	-17.82	292.54	81.67	115.2 Vir
10 Jul 2012	12h12m27.44s	-01 04' 29.7"	1.5700	1.4817	0.9	75.3	38.8	-18.29	292.83	82.07	115.1 Vir
11 Jul 2012	12h14m25.74s	-01 18' 27.7"	1.5688	1.4887	0.9	74.9	38.7	-18.76	293.12	82.47	115.1 Vir
12 Jul 2012	12h16m24.67s	-01 32' 28.7"	1.5676	1.4957	0.9	74.5	38.7	-19.23	293.41	82.87	115.0 Vir
13 Jul 2012	12h18m24.21s	-01 46' 32.4"	1.5664	1.5026	1.0	74.1	38.6	-19.70	293.69	83.26	115.0 Vir
14 Jul 2012	12h20m24.38s	-02 00' 38.8"	1.5652	1.5095	1.0	73.7	38.6	-20.17	293.98	83.65	115.0 Vir
15 Jul 2012	12h22m25.16s	-02 14' 47.8"	1.5640	1.5163	1.0	73.3	38.5	-20.64	294.26	84.04	114.9 Vir
16 Jul 2012	12h24m26.56s	-02 28' 59.2"	1.5628	1.5231	1.0	72.9	38.4	-21.10	294.54	84.42	114.9 Vir
17 Jul 2012	12h26m28.58s	-02 43' 13.0"	1.5616	1.5299	1.0	72.5	38.4	-21.56	294.82	84.80	114.8 Vir
18 Jul 2012	12h28m31.21s	-02 57' 29.1"	1.5603	1.5367	1.0	72.1	38.3	-22.03	295.10	85.17	114.8 Vir
19 Jul 2012	12h30m34.45s	-03 11' 47.3"	1.5591	1.5434	1.0	71.7	38.2	-22.49	295.38	85.54	114.7 Vir
20 Jul 2012	12h32m38.31s	-03 26' 07.5"	1.5579	1.5501	1.0	71.3	38.2	-22.95	295.66	85.91	114.7 Vir
21 Jul 2012	12h34m42.77s	-03 40' 29.7"	1.5566	1.5567	1.0	70.9	38.1	-23.40	295.93	86.27	114.6 Vir
22 Jul 2012	12h36m47.84s	-03 54' 53.6"	1.5554	1.5633	1.0	70.6	38.0	-23.86	296.21	86.62	114.5 Vir
23 Jul 2012	12h38m53.52s	-04 09' 19.2"	1.5541	1.5699	1.0	70.2	38.0	-24.32	296.48	86.97	114.5 Vir
24 Jul 2012	12h40m59.79s	-04 23' 46.4"	1.5529	1.5765	1.0	69.8	37.9	-24.77	296.76	87.32	114.4 Vir
25 Jul 2012	12h43m06.67s	-04 38' 14.9"	1.5516	1.5830	1.0	69.4	37.8	-25.22	297.03	87.65	114.4 Vir
26 Jul 2012	12h45m14.14s	-04 52' 44.7"	1.5504	1.5894	1.0	69.1	37.7	-25.67	297.30	87.99	114.3 Vir
27 Jul 2012	12h47m22.20s	-05 07' 15.7"	1.5491	1.5959	1.0	68.7	37.6	-26.12	297.57	88.32	114.2 Vir
28 Jul 2012	12h49m30.85s	-05 21' 47.7"	1.5479	1.6023	1.1	68.3	37.6	-26.57	297.84	88.64	114.2 Vir
29 Jul 2012	12h51m40.09s	-05 36' 20.5"	1.5466	1.6086	1.1	67.9	37.5	-27.02	298.11	88.96	114.1 Vir
30 Jul 2012	12h53m49.91s	-05 50' 54.2"	1.5453	1.6149	1.1	67.6	37.4	-27.46	298.38	89.27	114.0 Vir
31 Jul 2012	12h56m00.32s	-06 05' 28.5"	1.5441	1.6212	1.1	67.2	37.3	-27.90	298.64	89.58	114.0 Vir
1 Aug 2012	12h58m11.31s	-06 20' 03.3"	1.5428	1.6275	1.1	66.9	37.2	-28.35	298.91	89.89	113.9 Vir
2 Aug 2012	13h00m22.89s	-06 34' 38.5"	1.5415	1.6337	1.1	66.5	37.1	-28.79	299.18	90.20	113.8 Vir
3 Aug 2012	13h02m35.06s	-06 49' 14.0"	1.5403	1.6398	1.1	66.1	37.0	-29.22	299.44	90.50	113.7 Vir
4 Aug 2012	13h04m47.82s	-07 03' 49.7"	1.5390	1.6460	1.1	65.8	37.0	-29.66	299.70	90.80	113.6 Vir
5 Aug 2012	13h07m01.18s	-07 18' 25.4"	1.5377	1.6521	1.1	65.4	36.9	-30.10	299.97	91.10	113.6 Vir
6 Aug 2012	13h09m15.14s	-07 33' 01.2"	1.5364	1.6582	1.1	65.1	36.8	-30.53	300.23	91.40	113.5 Vir
7 Aug 2012	13h11m29.70s	-07 47' 36.8"	1.5351	1.6642	1.1	64.7	36.7	-30.96	300.49	91.70	113.4 Vir
8 Aug 2012	13h13m44.87s	-08 02' 12.1"	1.5338	1.6702	1.1	64.4	36.6	-31.39	300.75	92.00	113.3 Vir
9 Aug 2012	13h16m00.65s	-08 16' 47.0"	1.5325	1.6761	1.1	64.0	36.5	-31.82	301.01	92.29	113.2 Vir

EPHEMERIDE 2012 – MARS

Datum	RA	Deklination	r	delta	mag	Elong	Phase	Höhe	Az.	Gesch.	PA	
10 Aug 2012	13h18m17.05s	-08 31' 21.4"	1.5313	1.6821	1.1	63.7	36.4	-32.24	301.27	92.59	113.1	Vir
11 Aug 2012	13h20m34.08s	-08 45' 55.2"	1.5300	1.6880	1.1	63.3	36.3	-32.66	301.53	92.88	113.0	Vir
12 Aug 2012	13h22m51.73s	-09 00' 28.2"	1.5287	1.6938	1.1	63.0	36.2	-33.09	301.78	93.18	112.9	Vir
13 Aug 2012	13h25m10.00s	-09 15' 00.4"	1.5274	1.6997	1.1	62.6	36.1	-33.50	302.04	93.47	112.8	Vir
14 Aug 2012	13h27m28.92s	-09 29' 31.5"	1.5261	1.7054	1.1	62.3	36.0	-33.92	302.30	93.76	112.7	Vir
15 Aug 2012	13h29m48.46s	-09 44' 01.5"	1.5248	1.7112	1.1	62.0	35.9	-34.34	302.55	94.04	112.6	Vir
16 Aug 2012	13h32m08.65s	-09 58' 30.2"	1.5235	1.7169	1.1	61.6	35.8	-34.75	302.80	94.33	112.5	Vir
17 Aug 2012	13h34m29.49s	-10 12' 57.4"	1.5222	1.7226	1.1	61.3	35.7	-35.16	303.06	94.61	112.4	Vir
18 Aug 2012	13h36m50.97s	-10 27' 23.1"	1.5209	1.7282	1.1	61.0	35.6	-35.57	303.31	94.90	112.3	Vir
19 Aug 2012	13h39m13.10s	-10 41' 47.1"	1.5196	1.7338	1.2	60.6	35.5	-35.98	303.56	95.17	112.1	Vir
20 Aug 2012	13h41m35.87s	-10 56' 09.2"	1.5183	1.7394	1.2	60.3	35.4	-36.38	303.81	95.45	112.0	Vir
21 Aug 2012	13h43m59.30s	-11 10' 29.2"	1.5170	1.7449	1.2	60.0	35.3	-36.78	304.06	95.72	111.9	Vir
22 Aug 2012	13h46m23.38s	-11 24' 47.1"	1.5156	1.7504	1.2	59.6	35.2	-37.18	304.31	95.99	111.8	Vir
23 Aug 2012	13h48m48.11s	-11 39' 02.6"	1.5143	1.7559	1.2	59.3	35.0	-37.58	304.56	96.25	111.6	Vir
24 Aug 2012	13h51m13.50s	-11 53' 15.7"	1.5130	1.7613	1.2	59.0	34.9	-37.97	304.80	96.52	111.5	Vir
25 Aug 2012	13h53m31.56s	-12 07' 26.0"	1.5117	1.7667	1.2	58.7	34.8	-38.37	305.05	96.77	111.4	Vir
26 Aug 2012	13h56m06.23s	-12 21' 33.6"	1.5104	1.7720	1.2	58.3	34.7	-38.76	305.29	97.03	111.2	Vir
27 Aug 2012	13h58m33.57s	-12 35' 38.2"	1.5091	1.7773	1.2	58.0	34.6	-39.14	305.54	97.28	111.1	Vir
28 Aug 2012	14h01m01.58s	-12 49' 39.6"	1.5078	1.7826	1.2	57.7	34.5	-39.53	305.78	97.53	111.0	Vir
29 Aug 2012	14h03m29.24s	-13 03' 37.8"	1.5065	1.7878	1.2	57.4	34.4	-39.91	306.03	97.78	110.8	Vir
30 Aug 2012	14h05m59.57s	-13 17' 32.5"	1.5052	1.7930	1.2	57.1	34.3	-40.29	306.27	98.02	110.7	Vir
31 Aug 2012	14h08m29.56s	-13 31' 23.6"	1.5039	1.7982	1.2	56.7	34.1	-40.67	306.51	98.27	110.5	Vir
1 Sep 2012	14h11m00.22s	-13 45' 11.0"	1.5026	1.8033	1.2	56.4	34.0	-41.04	306.75	98.51	110.4	Vir
2 Sep 2012	14h13m31.56s	-13 58' 54.5"	1.5013	1.8084	1.2	56.1	33.9	-41.41	306.99	98.76	110.2	Vir
3 Sep 2012	14h16m03.58s	-14 12' 34.0"	1.5000	1.8135	1.2	55.8	33.8	-41.78	307.23	99.00	110.1	Vir
4 Sep 2012	14h18m36.29s	-14 26' 09.3"	1.4987	1.8185	1.2	55.5	33.7	-42.15	307.47	99.25	109.9	Vir
5 Sep 2012	14h21m09.69s	-14 39' 40.2"	1.4974	1.8235	1.2	55.2	33.6	-42.51	307.71	99.49	109.7	Vir
6 Sep 2012	14h23m43.78s	-14 53' 06.6"	1.4961	1.8285	1.2	54.9	33.4	-42.87	307.94	99.73	109.6	Lib
7 Sep 2012	14h26m18.58s	-15 06' 28.4"	1.4948	1.8334	1.2	54.6	33.3	-43.23	308.18	99.98	109.4	Lib
8 Sep 2012	14h28m54.08s	-15 19' 45.3"	1.4935	1.8383	1.2	54.3	33.2	-43.58	308.41	100.22	109.2	Lib
9 Sep 2012	14h31m30.30s	-15 32' 57.2"	1.4922	1.8431	1.2	53.9	33.1	-43.94	308.65	100.46	109.1	Lib
10 Sep 2012	14h34m07.23s	-15 46' 04.0"	1.4909	1.8480	1.2	53.6	33.0	-44.28	308.88	100.70	108.9	Lib
11 Sep 2012	14h36m44.87s	-15 59' 05.5"	1.4896	1.8528	1.2	53.3	32.8	-44.63	309.11	100.95	108.7	Lib
12 Sep 2012	14h39m23.25s	-16 12' 01.4"	1.4883	1.8575	1.2	53.0	32.7	-44.97	309.34	101.19	108.5	Lib
13 Sep 2012	14h42m02.35s	-16 24' 51.8"	1.4870	1.8623	1.2	52.7	32.6	-45.31	309.58	101.43	108.3	Lib
14 Sep 2012	14h44m42.18s	-16 37' 36.2"	1.4857	1.8669	1.2	52.4	32.5	-45.65	309.80	101.67	108.1	Lib
15 Sep 2012	14h47m22.74s	-16 50' 14.7"	1.4844	1.8716	1.2	52.1	32.3	-45.98	310.03	101.90	107.9	Lib
16 Sep 2012	14h50m04.03s	-17 02' 46.9"	1.4832	1.8762	1.2	51.8	32.2	-46.31	310.26	102.14	107.7	Lib
17 Sep 2012	14h52m46.06s	-17 15' 12.8"	1.4819	1.8808	1.2	51.5	32.1	-46.63	310.49	102.37	107.5	Lib
18 Sep 2012	14h55m28.82s	-17 27' 32.2"	1.4806	1.8854	1.2	51.2	32.0	-46.95	310.71	102.60	107.3	Lib
19 Sep 2012	14h58m12.32s	-17 39' 44.8"	1.4793	1.8899	1.2	50.9	31.8	-47.27	310.94	102.83	107.1	Lib
20 Sep 2012	15h00m56.55s	-17 51' 50.4"	1.4781	1.8944	1.2	50.6	31.7	-47.59	311.16	103.06	106.9	Lib
21 Sep 2012	15h03m41.51s	-18 03' 48.9"	1.4768	1.8989	1.2	50.4	31.6	-47.90	311.39	103.28	106.7	Lib
22 Sep 2012	15h06m27.19s	-18 15' 40.2"	1.4755	1.9033	1.2	50.1	31.4	-48.21	311.61	103.50	106.5	Lib
23 Sep 2012	15h09m13.61s	-18 27' 23.9"	1.4743	1.9077	1.2	49.8	31.3	-48.51	311.83	103.72	106.3	Lib
24 Sep 2012	15h12m00.75s	-18 38' 59.9"	1.4730	1.9120	1.2	49.5	31.2	-48.81	312.05	103.93	106.1	Lib
25 Sep 2012	15h14m48.61s	-18 50' 28.1"	1.4718	1.9164	1.2	49.2	31.0	-49.11	312.28	104.14	105.8	Lib
26 Sep 2012	15h17m37.19s	-19 01' 48.2"	1.4705	1.9206	1.2	48.9	30.9	-49.41	312.50	104.35	105.6	Lib
27 Sep 2012	15h20m26.50s	-19 13' 00.1"	1.4693	1.9249	1.2	48.6	30.8	-49.70	312.72	104.56	105.4	Lib
28 Sep 2012	15h23m16.53s	-19 24' 03.5"	1.4680	1.9291	1.2	48.3	30.7	-49.98	312.93	104.77	105.1	Lib
29 Sep 2012	15h26m07.28s	-19 34' 58.4"	1.4668	1.9333	1.2	48.0	30.5	-50.26	313.15	104.98	104.9	Lib
30 Sep 2012	15h28m58.76s	-19 45' 44.5"	1.4655	1.9375	1.2	47.8	30.4	-50.54	313.37	105.19	104.7	Lib
1 Okt 2012	15h31m50.95s	-19 56' 21.6"	1.4643	1.9416	1.2	47.5	30.3	-50.82	313.59	105.39	104.4	Lib
2 Okt 2012	15h34m43.87s	-20 06' 49.5"	1.4631	1.9458	1.2	47.2	30.1	-51.09	313.80	105.60	104.2	Lib
3 Okt 2012	15h37m37.52s	-20 17' 08.1"	1.4619	1.9498	1.2	46.9	30.0	-51.36	314.02	105.81	103.9	Lib
4 Okt 2012	15h40m31.88s	-20 27' 17.3"	1.4606	1.9539	1.2	46.6	29.9	-51.62	314.24	106.01	103.7	Lib
5 Okt 2012	15h43m26.97s	-20 37' 16.7"	1.4594	1.9579	1.2	46.3	29.7	-51.88	314.45	106.22	103.4	Lib
6 Okt 2012	15h46m22.78s	-20 47' 06.2"	1.4582	1.9619	1.2	46.1	29.6	-52.13	314.66	106.43	103.2	Lib
7 Okt 2012	15h49m19.31s	-20 56' 45.7"	1.4570	1.9659	1.2	45.8	29.4	-52.38	314.88	106.63	102.9	Sco
8 Okt 2012	15h52m16.56s	-21 06' 15.0"	1.4558	1.9698	1.2	45.5	29.3	-52.63	315.09	106.84	102.7	Sco
9 Okt 2012	15h55m14.53s	-21 15' 33.8"	1.4546	1.9737	1.2	45.2	29.2	-52.87	315.31	107.05	102.4	Sco
10 Okt 2012	15h58m13.21s	-21 24' 42.0"	1.4534	1.9776	1.2	44.9	29.0	-53.11	315.52	107.25	102.1	Sco
11 Okt 2012	16h01m12.60s	-21 33' 39.5"	1.4522	1.9815	1.2	44.7	28.9	-53.34	315.73	107.46	101.9	Sco
12 Okt 2012	16h04m12.70s	-21 42' 25.9"	1.4511	1.9853	1.2	44.4	28.8	-53.57	315.94	107.66	101.6	Sco
13 Okt 2012	16h07m13.51s	-21 51' 01.2"	1.4499	1.9891	1.2	44.1	28.6	-53.80	316.15	107.86	101.3	Sco
14 Okt 2012	16h10m15.01s	-21 59' 25.2"	1.4487	1.9929	1.2	43.8	28.5	-54.02	316.37	108.06	101.0	Sco
15 Okt 2012	16h13m17.21s	-22 07' 37.6"	1.4476	1.9966	1.2	43.6	28.3	-54.24	316.58	108.26	100.8	Sco
16 Okt 2012	16h16m20.09s	-22 15' 38.4"	1.4464	2.0004	1.2	43.3	28.2	-54.45	316.79	108.46	100.5	Sco
17 Okt 2012	16h19m23.65s	-22 23' 27.3"	1.4453	2.0041	1.2	43.0	28.1	-54.66	317.00	108.66	100.2	Sco
18 Okt 2012	16h22m27.87s	-22 31' 04.1"	1.4441	2.0077	1.2	42.7	27.9	-54.86	317.21	108.85	99.9	Sco
19 Okt 2012	16h25m32.75s	-22 38' 28.7"	1.4430	2.0114	1.2	42.5	27.8	-55.06	317.42	109.04	99.6	Oph
20 Okt 2012	16h28m38.27s	-22 45' 40.9"	1.4419	2.0150	1.2	42.2	27.6	-55.26	317.63	109.22	99.3	Oph
21 Okt 2012	16h31m44.43s	-22 52' 40.5"	1.4407	2.0185	1.2	41.9	27.5	-55.45	317.85	109.40	99.0	Oph
22 Okt 2012	16h34m51.21s	-22 59' 27.4"	1.4396	2.0221	1.2	41.7	27.4	-55.63	318.06	109.58	98.7	Oph

EPHEMERIDE 2012 – MARS

Datum	RA	Deklination	r	delta	mag	Elong	Phase	Höhe	Az.	Gesch.	PA
23 Okt 2012	16h37m58.61s	-23 06' 01.3"	1.4385	2.0256	1.2	41.4	27.2	-55.81	318.27	109.76	98.4 Oph
24 Okt 2012	16h41m06.60s	-23 12' 22.2"	1.4374	2.0291	1.2	41.1	27.1	-55.99	318.48	109.94	98.1 Oph
25 Okt 2012	16h44m15.20s	-23 18' 29.8"	1.4363	2.0326	1.2	40.9	26.9	-56.16	318.70	110.11	97.8 Oph
26 Okt 2012	16h47m24.37s	-23 24' 24.1"	1.4353	2.0361	1.2	40.6	26.8	-56.33	318.91	110.29	97.5 Oph
27 Okt 2012	16h50m34.11s	-23 30' 04.7"	1.4342	2.0395	1.2	40.3	26.6	-56.49	319.13	110.46	97.2 Oph
28 Okt 2012	16h53m44.42s	-23 35' 31.7"	1.4331	2.0429	1.2	40.1	26.5	-56.65	319.34	110.63	96.9 Oph
29 Okt 2012	16h56m55.28s	-23 40' 44.8"	1.4320	2.0463	1.2	39.8	26.4	-56.80	319.56	110.80	96.6 Oph
30 Okt 2012	17h00m06.68s	-23 45' 44.0"	1.4310	2.0496	1.2	39.5	26.2	-56.95	319.78	110.97	96.3 Oph
31 Okt 2012	17h03m18.61s	-23 50' 28.9"	1.4299	2.0530	1.2	39.3	26.1	-57.10	320.00	111.14	95.9 Oph
1 Nov 2012	17h06m31.07s	-23 54' 59.6"	1.4289	2.0563	1.2	39.0	25.9	-57.24	320.22	111.31	95.6 Oph
2 Nov 2012	17h09m44.03s	-23 59' 15.9"	1.4279	2.0596	1.2	38.7	25.8	-57.37	320.44	111.48	95.3 Oph
3 Nov 2012	17h12m57.50s	-24 03' 17.6"	1.4269	2.0628	1.2	38.5	25.6	-57.50	320.66	111.65	95.0 Oph
4 Nov 2012	17h16m11.45s	-24 07' 04.6"	1.4258	2.0661	1.2	38.2	25.5	-57.63	320.88	111.81	94.7 Oph
5 Nov 2012	17h19m25.87s	-24 10' 36.8"	1.4248	2.0693	1.2	38.0	25.3	-57.75	321.11	111.98	94.3 Oph
6 Nov 2012	17h22m40.76s	-24 13' 54.1"	1.4238	2.0725	1.2	37.7	25.2	-57.86	321.33	112.15	94.0 Oph
7 Nov 2012	17h25m56.11s	-24 16' 56.3"	1.4229	2.0757	1.2	37.4	25.1	-57.97	321.56	112.31	93.7 Oph
8 Nov 2012	17h29m11.89s	-24 19' 43.3"	1.4219	2.0789	1.2	37.2	24.9	-58.08	321.79	112.48	93.4 Oph
9 Nov 2012	17h32m28.09s	-24 22' 15.0"	1.4209	2.0820	1.2	36.9	24.8	-58.18	322.02	112.64	93.0 Oph
10 Nov 2012	17h35m44.71s	-24 24' 31.4"	1.4200	2.0852	1.2	36.7	24.6	-58.28	322.25	112.81	92.7 Oph
11 Nov 2012	17h39m01.72s	-24 26' 32.2"	1.4190	2.0883	1.2	36.4	24.5	-58.37	322.49	112.97	92.4 Oph
12 Nov 2012	17h42m19.11s	-24 28' 17.4"	1.4181	2.0914	1.2	36.2	24.3	-58.46	322.72	113.13	92.0 Oph
13 Nov 2012	17h45m36.87s	-24 29' 47.0"	1.4171	2.0944	1.2	35.9	24.2	-58.54	322.96	113.29	91.7 Sgr
14 Nov 2012	17h48m54.97s	-24 31' 00.8"	1.4162	2.0975	1.2	35.6	24.0	-58.61	323.20	113.44	91.4 Sgr
15 Nov 2012	17h52m13.40s	-24 31' 58.7"	1.4153	2.1005	1.2	35.4	23.9	-58.69	323.45	113.59	91.0 Sgr
16 Nov 2012	17h55m32.14s	-24 32' 40.8"	1.4144	2.1035	1.2	35.1	23.7	-58.75	323.69	113.74	90.7 Sgr
17 Nov 2012	17h58m51.17s	-24 33' 06.8"	1.4135	2.1065	1.2	34.9	23.6	-58.82	323.94	113.89	90.3 Sgr
18 Nov 2012	18h02m10.46s	-24 33' 16.8"	1.4126	2.1094	1.2	34.6	23.4	-58.87	324.19	114.03	90.0 Sgr
19 Nov 2012	18h05m30.01s	-24 33' 10.6"	1.4118	2.1124	1.2	34.4	23.3	-58.93	324.44	114.17	89.7 Sgr
20 Nov 2012	18h08m49.78s	-24 32' 48.3"	1.4109	2.1153	1.2	34.1	23.1	-58.98	324.69	114.30	89.3 Sgr
21 Nov 2012	18h12m09.77s	-24 32' 09.8"	1.4100	2.1182	1.2	33.9	23.0	-59.02	324.95	114.44	89.0 Sgr
22 Nov 2012	18h15m29.94s	-24 31' 15.0"	1.4092	2.1211	1.2	33.6	22.8	-59.06	325.21	114.57	88.7 Sgr
23 Nov 2012	18h18m50.30s	-24 30' 03.9"	1.4084	2.1240	1.2	33.4	22.7	-59.09	325.47	114.70	88.3 Sgr
24 Nov 2012	18h22m10.81s	-24 28' 36.5"	1.4076	2.1268	1.2	33.1	22.5	-59.12	325.73	114.83	88.0 Sgr
25 Nov 2012	18h25m31.46s	-24 26' 52.7"	1.4068	2.1297	1.2	32.9	22.4	-59.14	326.00	114.95	87.6 Sgr
26 Nov 2012	18h28m52.24s	-24 24' 52.6"	1.4060	2.1325	1.2	32.6	22.2	-59.16	326.27	115.08	87.3 Sgr
27 Nov 2012	18h32m13.12s	-24 22' 36.0"	1.4052	2.1353	1.2	32.4	22.1	-59.18	326.55	115.20	87.0 Sgr
28 Nov 2012	18h35m34.09s	-24 20' 03.0"	1.4044	2.1381	1.2	32.1	21.9	-59.19	326.82	115.32	86.6 Sgr
29 Nov 2012	18h38m55.13s	-24 17' 13.6"	1.4036	2.1408	1.2	31.9	21.8	-59.19	327.10	115.45	86.3 Sgr
30 Nov 2012	18h42m16.24s	-24 14' 07.7"	1.4029	2.1436	1.2	31.6	21.6	-59.19	327.38	115.57	86.0 Sgr
1 Dez 2012	18h45m37.38s	-24 10' 45.4"	1.4021	2.1464	1.2	31.4	21.5	-59.19	327.67	115.69	85.6 Sgr
2 Dez 2012	18h48m58.56s	-24 07' 06.7"	1.4014	2.1491	1.2	31.2	21.3	-59.18	327.96	115.81	85.3 Sgr
3 Dez 2012	18h52m19.74s	-24 03' 11.6"	1.4007	2.1518	1.2	30.9	21.2	-59.17	328.25	115.92	85.0 Sgr
4 Dez 2012	18h55m40.92s	-23 59' 00.1"	1.4000	2.1545	1.2	30.7	21.0	-59.15	328.54	116.04	84.6 Sgr
5 Dez 2012	18h59m02.09s	-23 54' 32.3"	1.3993	2.1572	1.2	30.4	20.9	-59.12	328.84	116.16	84.3 Sgr
6 Dez 2012	19h02m23.22s	-23 49' 48.1"	1.3986	2.1599	1.2	30.2	20.7	-59.10	329.14	116.27	84.0 Sgr
7 Dez 2012	19h05m44.30s	-23 44' 47.6"	1.3980	2.1625	1.2	29.9	20.6	-59.06	329.45	116.39	83.6 Sgr
8 Dez 2012	19h09m05.31s	-23 39' 30.8"	1.3973	2.1652	1.2	29.7	20.4	-59.03	329.76	116.50	83.3 Sgr
9 Dez 2012	19h12m26.25s	-23 33' 57.9"	1.3967	2.1678	1.2	29.4	20.3	-58.98	330.07	116.61	83.0 Sgr
10 Dez 2012	19h15m47.09s	-23 28' 08.7"	1.3960	2.1704	1.2	29.2	20.1	-58.94	330.38	116.72	82.7 Sgr
11 Dez 2012	19h19m07.83s	-23 22' 03.6"	1.3954	2.1731	1.2	29.0	20.0	-58.89	330.70	116.83	82.3 Sgr
12 Dez 2012	19h22m28.43s	-23 15' 42.4"	1.3948	2.1757	1.2	28.7	19.8	-58.83	331.01	116.93	82.0 Sgr
13 Dez 2012	19h25m48.90s	-23 09' 05.2"	1.3942	2.1782	1.2	28.5	19.7	-58.77	331.34	117.03	81.7 Sgr
14 Dez 2012	19h29m09.20s	-23 02' 12.2"	1.3936	2.1808	1.2	28.2	19.5	-58.70	331.66	117.13	81.4 Sgr
15 Dez 2012	19h32m29.33s	-22 55' 03.5"	1.3931	2.1834	1.2	28.0	19.4	-58.63	331.99	117.22	81.1 Sgr
16 Dez 2012	19h35m49.27s	-22 47' 39.1"	1.3925	2.1859	1.2	27.8	19.2	-58.56	332.32	117.31	80.7 Sgr
17 Dez 2012	19h39m08.99s	-22 39' 59.1"	1.3920	2.1884	1.2	27.5	19.1	-58.48	332.66	117.40	80.4 Sgr
18 Dez 2012	19h42m28.49s	-22 32' 03.7"	1.3914	2.1910	1.2	27.3	18.9	-58.40	332.99	117.48	80.1 Sgr
19 Dez 2012	19h45m47.75s	-22 23' 53.0"	1.3909	2.1935	1.2	27.0	18.8	-58.31	333.33	117.57	79.8 Sgr
20 Dez 2012	19h49m06.75s	-22 15' 27.0"	1.3904	2.1959	1.2	26.8	18.6	-58.22	333.68	117.64	79.5 Sgr
21 Dez 2012	19h52m25.48s	-22 06' 45.9"	1.3899	2.1984	1.2	26.6	18.5	-58.12	334.02	117.72	79.2 Sgr
22 Dez 2012	19h55m43.94s	-21 57' 49.8"	1.3894	2.2009	1.2	26.3	18.3	-58.02	334.37	117.79	78.9 Sgr
23 Dez 2012	19h59m02.10s	-21 48' 38.8"	1.3890	2.2034	1.2	26.1	18.1	-57.92	334.73	117.86	78.6 Sgr
24 Dez 2012	20h02m19.95s	-21 39' 13.1"	1.3885	2.2058	1.2	25.9	18.0	-57.81	335.08	117.93	78.3 Sgr
25 Dez 2012	20h05m37.50s	-21 29' 32.8"	1.3881	2.2082	1.2	25.6	17.8	-57.69	335.44	118.00	78.0 Sgr
26 Dez 2012	20h08m54.71s	-21 19' 38.0"	1.3877	2.2107	1.2	25.4	17.7	-57.58	335.80	118.06	77.7 Cap
27 Dez 2012	20h12m11.60s	-21 09' 28.8"	1.3873	2.2131	1.2	25.1	17.5	-57.45	336.16	118.13	77.4 Cap
28 Dez 2012	20h15m28.14s	-20 59' 05.4"	1.3869	2.2155	1.2	24.9	17.4	-57.33	336.52	118.19	77.1 Cap
29 Dez 2012	20h18m44.34s	-20 48' 28.0"	1.3865	2.2179	1.2	24.7	17.2	-57.20	336.89	118.25	76.9 Cap
30 Dez 2012	20h22m00.18s	-20 37' 36.6"	1.3861	2.2203	1.2	24.4	17.1	-57.06	337.26	118.31	76.6 Cap
31 Dez 2012	20h25m15.65s	-20 26' 31.4"	1.3858	2.2227	1.2	24.2	16.9	-56.92	337.63	118.37	76.3 Cap
1 Jan 2013	20h28m30.76s	-20 15' 12.6"	1.3854	2.2250	1.2	24.0	16.8	-56.78	338.01	118.43	76.0 Cap