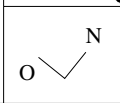
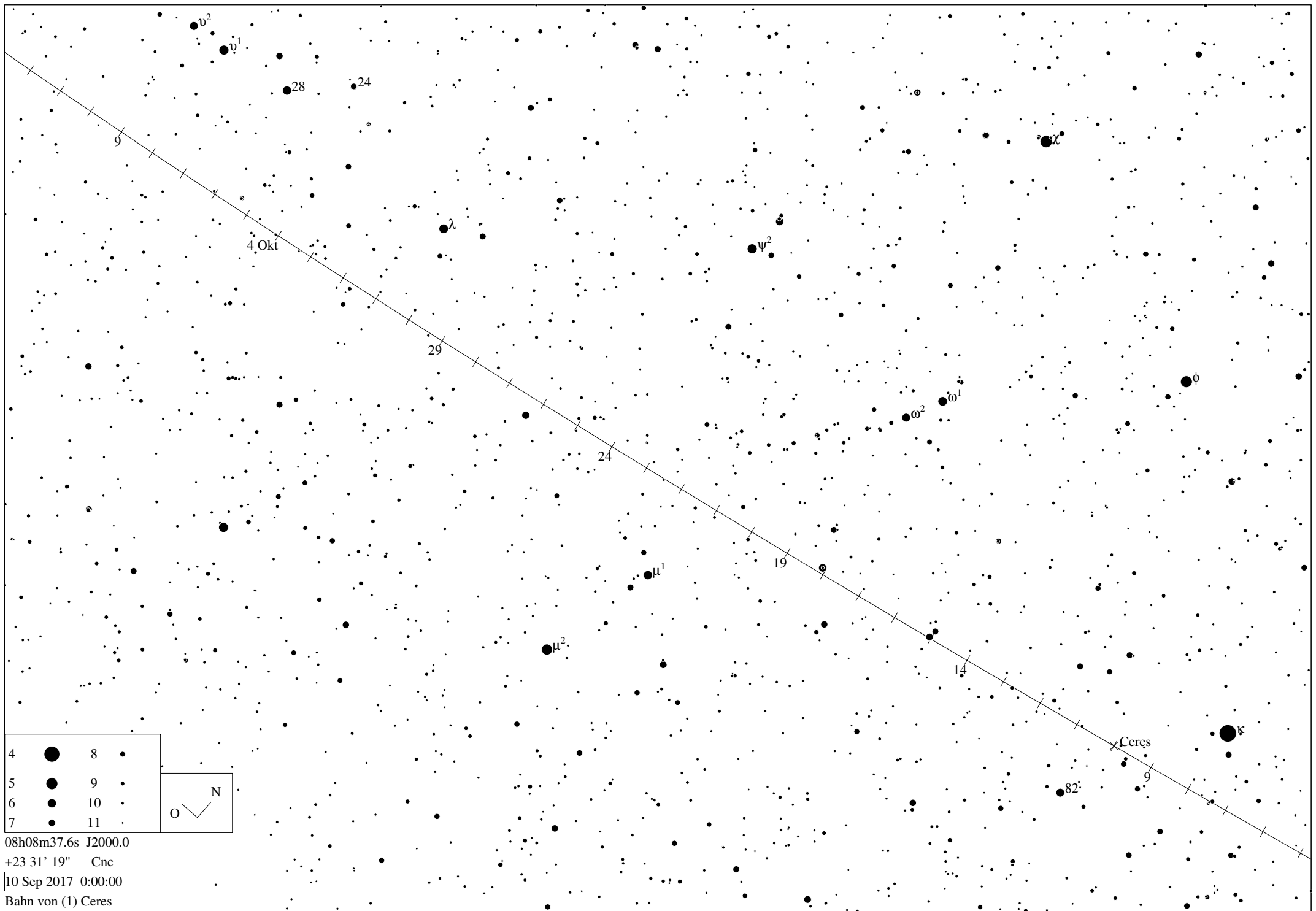
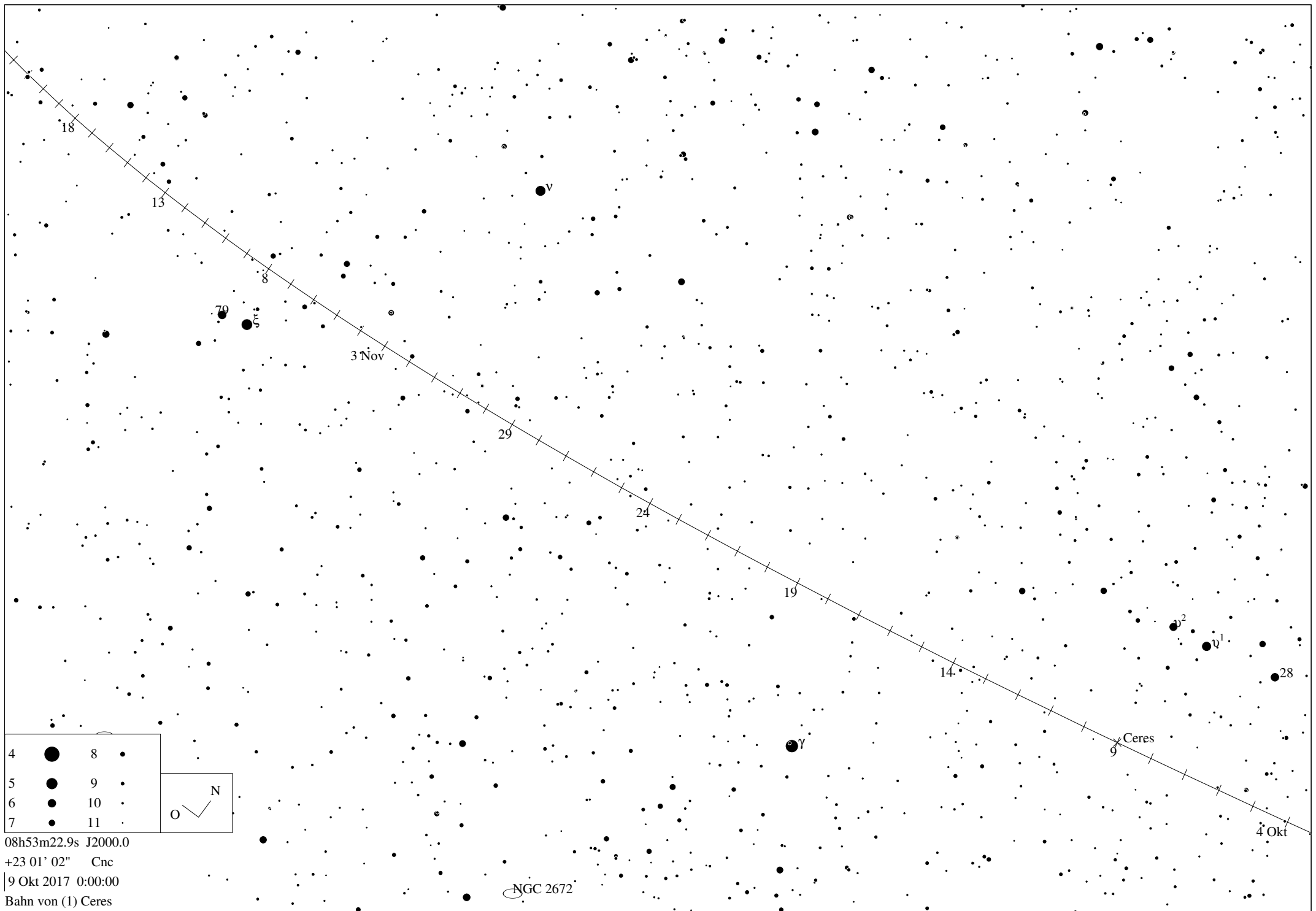


4		8	
5		9	
6		10	
7		11	



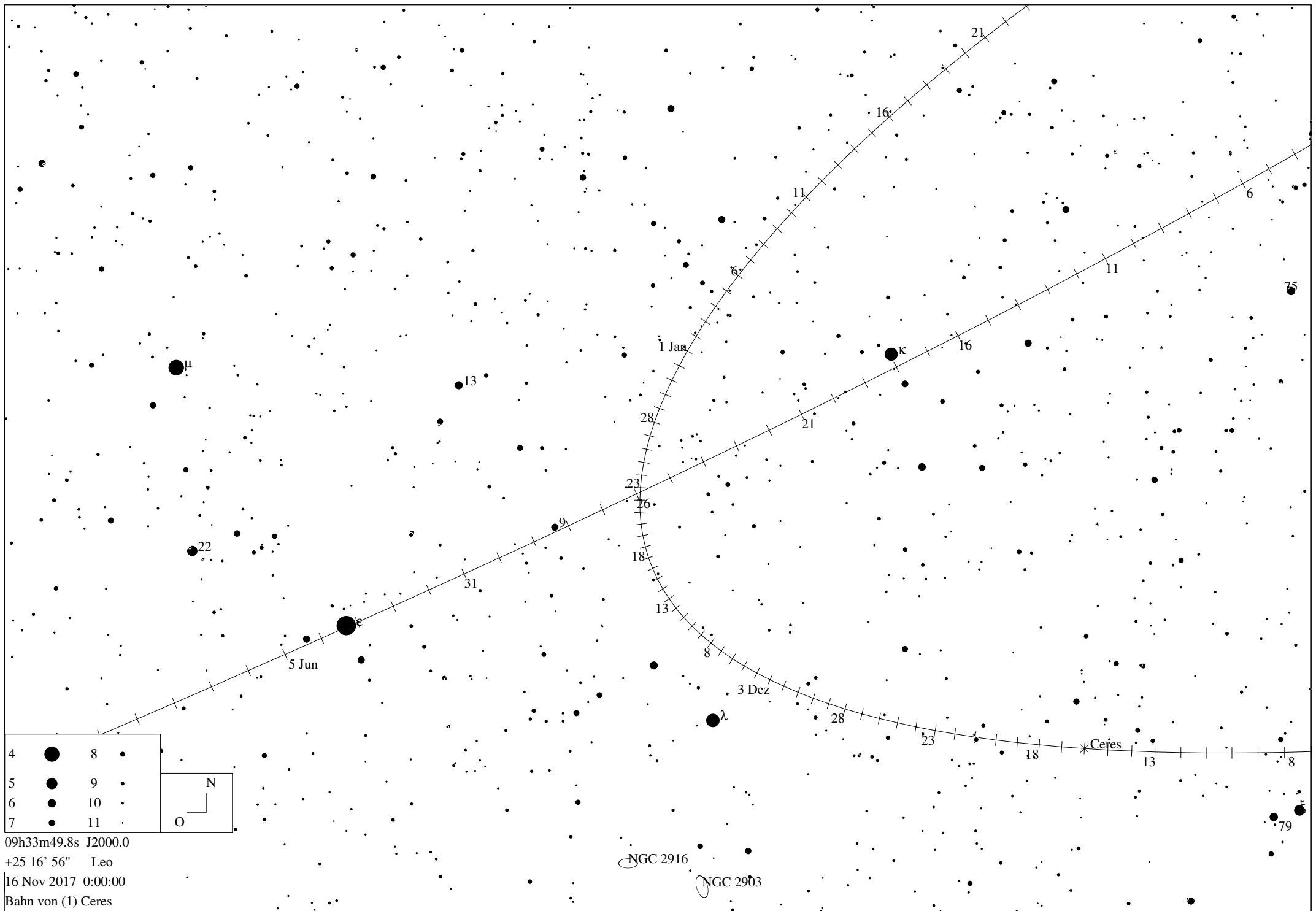


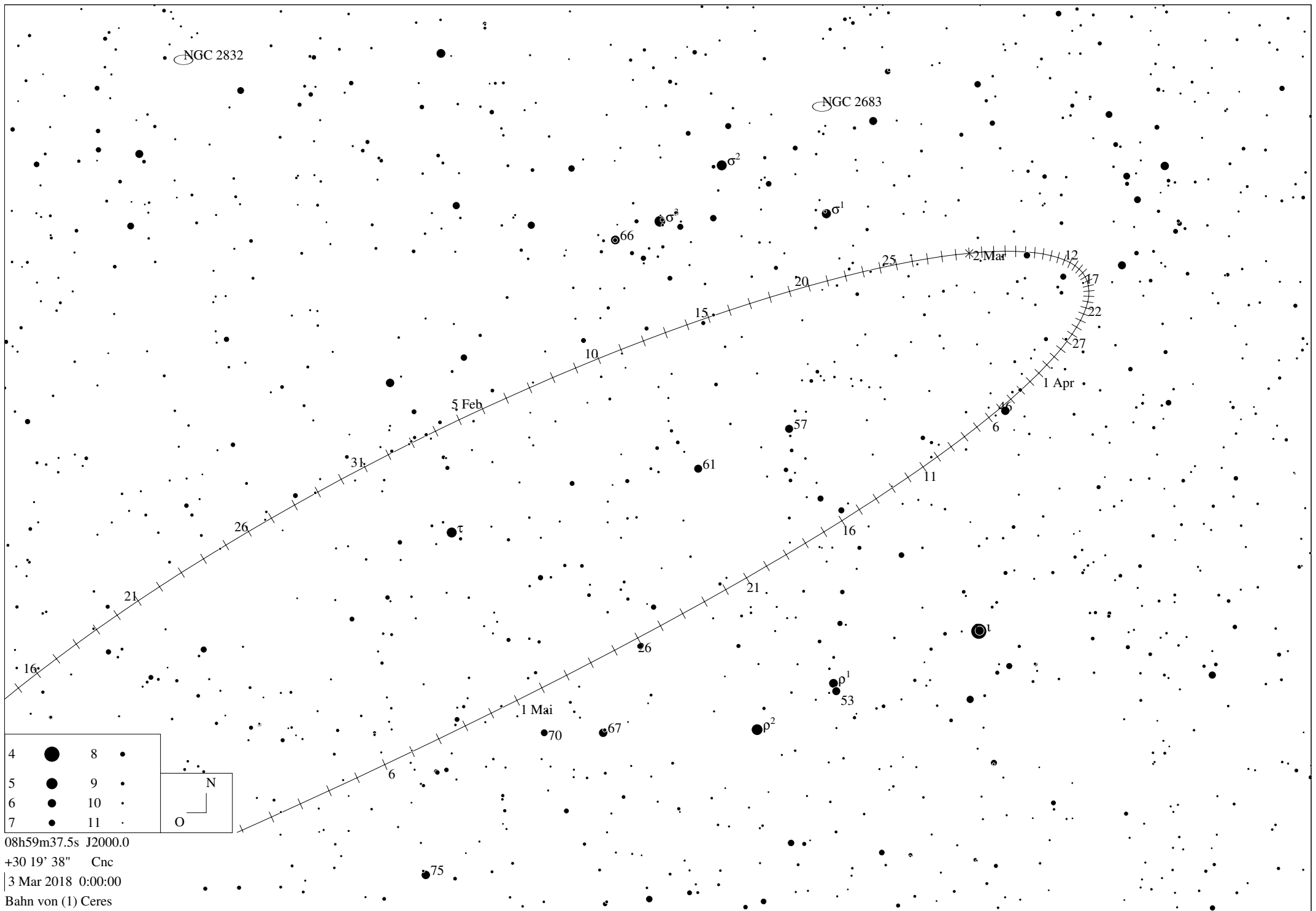


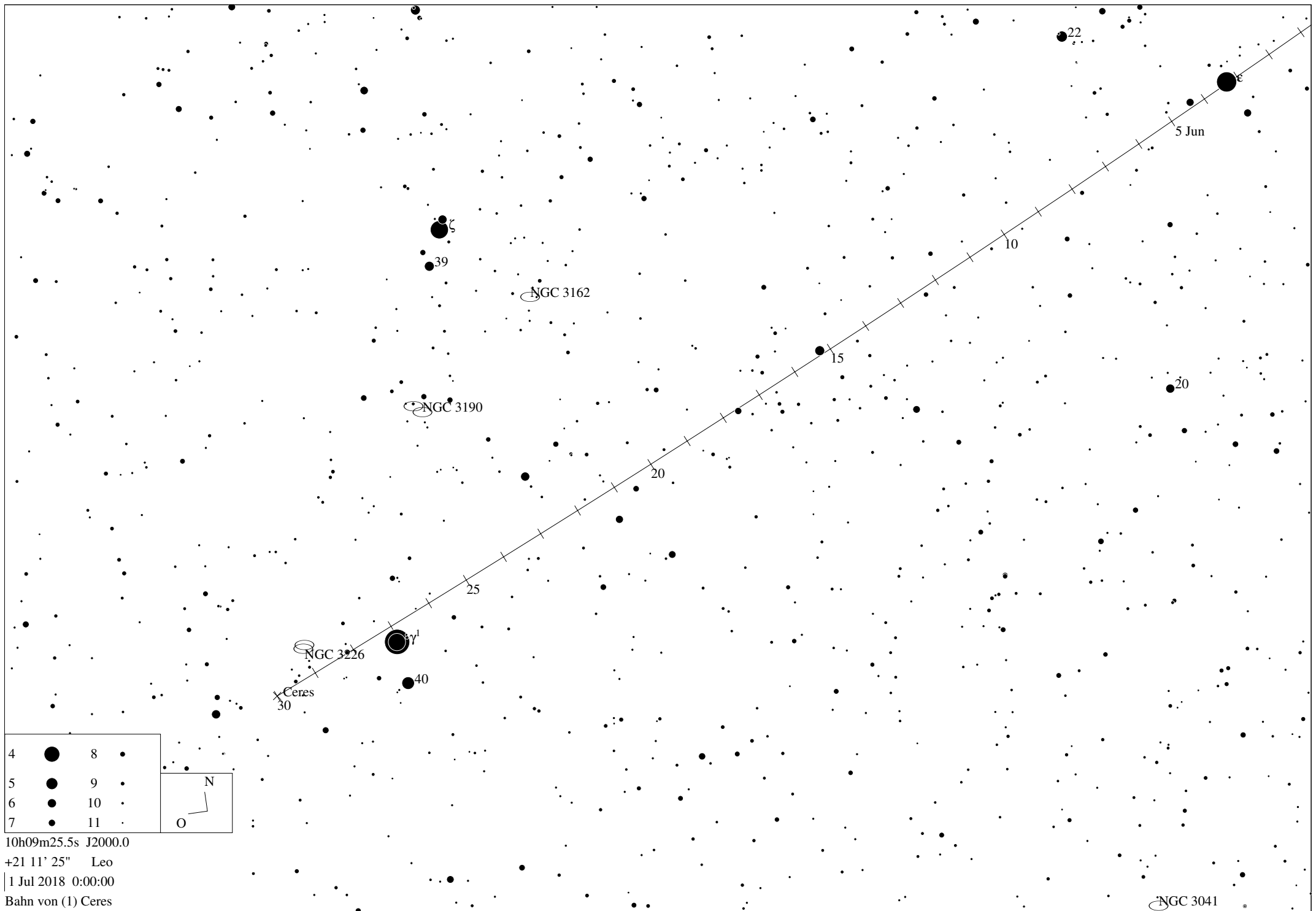
4	●	8	●
5	●	9	●
6	●	10	●
7	●	11	●

O N

08h53m22.9s J2000.0  
 +23 01' 02" Cnc  
 9 Okt 2017 0:00:00  
 Bahn von (1) Ceres







## Ephemeride des Zwergplaneten (1) Ceres

Datum	RA	Deklination	r	delta	mag	Elong	Phase	Höhe	Az.	Gesch.	PA	Stb
-----	--	-----	-	-----	---	-----	-----	-----	-----	-----	-----	-----
15 Aug 2017	07h03m13.64s	+24 11' 50.0"	2.6580	3.3853	8.9	37.8	13.5	-1.64	45.51	60.80	90.9	Gem
16 Aug 2017	07h04m59.80s	+24 11' 21.7"	2.6573	3.3765	8.9	38.3	13.7	-1.40	45.95	60.69	91.0	Gem
17 Aug 2017	07h06m45.77s	+24 10' 50.3"	2.6567	3.3676	8.9	38.9	13.8	-1.17	46.38	60.58	91.2	Gem
18 Aug 2017	07h08m31.52s	+24 10' 15.6"	2.6560	3.3586	8.9	39.4	14.0	-0.94	46.82	60.46	91.3	Gem
19 Aug 2017	07h10m17.07s	+24 09' 37.9"	2.6553	3.3495	8.9	40.0	14.2	-0.70	47.26	60.34	91.4	Gem
20 Aug 2017	07h12m02.39s	+24 08' 57.1"	2.6546	3.3403	8.9	40.6	14.4	-0.46	47.70	60.22	91.5	Gem
21 Aug 2017	07h13m47.48s	+24 08' 13.3"	2.6539	3.3310	8.9	41.1	14.5	-0.22	48.14	60.09	91.7	Gem
22 Aug 2017	07h15m32.33s	+24 07' 26.5"	2.6532	3.3216	8.9	41.7	14.7	0.02	48.58	59.96	91.8	Gem
23 Aug 2017	07h17m16.94s	+24 06' 36.9"	2.6525	3.3121	8.9	42.3	14.9	0.26	49.02	59.83	91.9	Gem
24 Aug 2017	07h19m01.30s	+24 05' 44.5"	2.6519	3.3025	8.9	42.8	15.0	0.51	49.46	59.69	92.0	Gem
25 Aug 2017	07h20m45.40s	+24 04' 49.3"	2.6512	3.2928	8.9	43.4	15.2	0.75	49.90	59.55	92.1	Gem
26 Aug 2017	07h22m29.23s	+24 03' 51.4"	2.6505	3.2830	8.9	44.0	15.4	1.00	50.34	59.40	92.2	Gem
27 Aug 2017	07h24m12.79s	+24 02' 50.9"	2.6498	3.2731	8.9	44.6	15.5	1.25	50.78	59.26	92.3	Gem
28 Aug 2017	07h25m56.08s	+24 01' 47.8"	2.6491	3.2632	8.9	45.1	15.7	1.50	51.22	59.11	92.4	Gem
29 Aug 2017	07h27m39.08s	+24 00' 42.3"	2.6485	3.2531	8.9	45.7	15.8	1.75	51.66	58.95	92.5	Gem
30 Aug 2017	07h29m21.80s	+23 59' 34.3"	2.6478	3.2430	8.9	46.3	16.0	2.01	52.11	58.80	92.6	Gem
31 Aug 2017	07h31m04.22s	+23 58' 24.0"	2.6471	3.2327	8.9	46.9	16.2	2.26	52.55	58.64	92.7	Gem
1 Sep 2017	07h32m46.34s	+23 57' 11.3"	2.6465	3.2224	8.9	47.4	16.3	2.52	52.99	58.47	92.8	Gem
2 Sep 2017	07h34m28.16s	+23 55' 56.5"	2.6458	3.2120	8.9	48.0	16.5	2.78	53.44	58.31	92.9	Gem
3 Sep 2017	07h36m09.67s	+23 54' 39.5"	2.6451	3.2015	8.9	48.6	16.6	3.04	53.88	58.14	93.0	Gem
4 Sep 2017	07h37m50.87s	+23 53' 20.5"	2.6445	3.1909	8.9	49.2	16.8	3.30	54.33	57.97	93.1	Gem
5 Sep 2017	07h39m31.74s	+23 51' 59.5"	2.6438	3.1802	8.9	49.8	16.9	3.57	54.77	57.80	93.2	Gem
6 Sep 2017	07h41m12.29s	+23 50' 36.6"	2.6431	3.1695	8.9	50.4	17.1	3.83	55.22	57.62	93.3	Gem
7 Sep 2017	07h42m52.51s	+23 49' 11.8"	2.6425	3.1586	8.9	51.0	17.2	4.10	55.67	57.44	93.4	Gem
8 Sep 2017	07h44m32.39s	+23 47' 45.3"	2.6418	3.1477	8.9	51.6	17.4	4.37	56.11	57.26	93.5	Gem
9 Sep 2017	07h46m11.94s	+23 46' 17.1"	2.6412	3.1367	8.9	52.1	17.5	4.64	56.56	57.08	93.5	Gem
10 Sep 2017	07h47m51.13s	+23 44' 47.3"	2.6405	3.1256	8.9	52.7	17.7	4.92	57.01	56.89	93.6	Gem
11 Sep 2017	07h49m29.97s	+23 43' 16.1"	2.6399	3.1144	8.9	53.3	17.8	5.20	57.46	56.69	93.7	Gem
12 Sep 2017	07h51m08.44s	+23 41' 43.4"	2.6392	3.1032	8.9	53.9	18.0	5.47	57.91	56.49	93.8	Gem
13 Sep 2017	07h52m46.55s	+23 40' 09.4"	2.6386	3.0919	8.9	54.5	18.1	5.75	58.36	56.29	93.8	Gem
14 Sep 2017	07h54m24.28s	+23 38' 34.2"	2.6379	3.0805	8.9	55.1	18.2	6.04	58.82	56.08	93.9	Gem
15 Sep 2017	07h56m01.62s	+23 36' 57.9"	2.6373	3.0690	8.9	55.7	18.4	6.32	59.27	55.87	94.0	Gem
16 Sep 2017	07h57m38.56s	+23 35' 20.5"	2.6366	3.0574	8.9	56.4	18.5	6.61	59.72	55.65	94.0	Gem
17 Sep 2017	07h59m15.10s	+23 33' 42.2"	2.6360	3.0458	8.9	57.0	18.6	6.90	60.18	55.42	94.1	Gem
18 Sep 2017	08h00m51.22s	+23 32' 03.0"	2.6354	3.0341	8.9	57.6	18.8	7.19	60.63	55.19	94.1	Cnc
19 Sep 2017	08h02m26.92s	+23 30' 23.1"	2.6347	3.0223	8.8	58.2	18.9	7.48	61.09	54.96	94.2	Cnc
20 Sep 2017	08h04m02.18s	+23 28' 42.6"	2.6341	3.0104	8.8	58.8	19.0	7.78	61.55	54.71	94.2	Cnc
21 Sep 2017	08h05m37.00s	+23 27' 01.5"	2.6335	2.9985	8.8	59.4	19.2	8.07	62.00	54.47	94.2	Cnc
22 Sep 2017	08h07m11.37s	+23 25' 20.0"	2.6328	2.9865	8.8	60.0	19.3	8.37	62.46	54.21	94.3	Cnc
23 Sep 2017	08h08m49.28s	+23 23' 38.2"	2.6322	2.9744	8.8	60.7	19.4	8.68	62.92	53.96	94.3	Cnc
24 Sep 2017	08h10m18.72s	+23 21' 56.1"	2.6316	2.9623	8.8	61.3	19.5	8.98	63.38	53.69	94.3	Cnc
25 Sep 2017	08h11m51.68s	+23 20' 13.9"	2.6310	2.9501	8.8	61.9	19.7	9.29	63.85	53.43	94.4	Cnc
26 Sep 2017	08h13m24.17s	+23 18' 31.6"	2.6303	2.9378	8.8	62.5	19.8	9.60	64.31	53.15	94.4	Cnc
27 Sep 2017	08h14m56.16s	+23 16' 49.5"	2.6297	2.9255	8.8	63.2	19.9	9.91	64.78	52.88	94.4	Cnc
28 Sep 2017	08h16m27.65s	+23 15' 07.5"	2.6291	2.9131	8.8	63.8	20.0	10.23	65.24	52.60	94.4	Cnc
29 Sep 2017	08h17m58.64s	+23 13' 25.8"	2.6285	2.9006	8.8	64.4	20.1	10.54	65.71	52.31	94.4	Cnc
30 Sep 2017	08h19m29.11s	+23 11' 44.5"	2.6279	2.8881	8.8	65.1	20.2	10.86	66.18	52.02	94.4	Cnc
1 Okt 2017	08h20m59.06s	+23 10' 03.8"	2.6273	2.8755	8.8	65.7	20.3	11.19	66.65	51.72	94.4	Cnc
2 Okt 2017	08h22m28.49s	+23 08' 23.6"	2.6266	2.8629	8.8	66.4	20.4	11.51	67.12	51.42	94.4	Cnc
3 Okt 2017	08h23m57.38s	+23 06' 44.2"	2.6260	2.8502	8.8	67.0	20.5	11.84	67.59	51.11	94.4	Cnc
4 Okt 2017	08h25m25.72s	+23 05' 05.7"	2.6254	2.8375	8.8	67.6	20.6	12.17	68.06	50.80	94.4	Cnc
5 Okt 2017	08h26m53.52s	+23 03' 28.1"	2.6248	2.8247	8.8	68.3	20.7	12.50	68.54	50.48	94.4	Cnc
6 Okt 2017	08h28m20.75s	+23 01' 51.6"	2.6242	2.8119	8.7	68.9	20.8	12.84	69.01	50.16	94.3	Cnc
7 Okt 2017	08h29m47.42s	+23 00' 16.3"	2.6236	2.7990	8.7	69.6	20.9	13.18	69.49	49.83	94.3	Cnc
8 Okt 2017	08h31m13.51s	+22 58' 42.4"	2.6230	2.7861	8.7	70.3	21.0	13.52	69.97	49.50	94.3	Cnc
9 Okt 2017	08h32m39.02s	+22 57' 09.9"	2.6224	2.7731	8.7	70.9	21.1	13.87	70.45	49.16	94.2	Cnc
10 Okt 2017	08h34m03.93s	+22 55' 39.0"	2.6218	2.7600	8.7	71.6	21.2	14.21	70.93	48.81	94.2	Cnc
11 Okt 2017	08h35m28.23s	+22 54' 09.8"	2.6212	2.7470	8.7	72.3	21.3	14.56	71.42	48.46	94.1	Cnc
12 Okt 2017	08h36m51.91s	+22 52' 42.5"	2.6207	2.7338	8.7	72.9	21.4	14.92	71.90	48.09	94.0	Cnc
13 Okt 2017	08h38m14.95s	+22 51' 17.2"	2.6201	2.7207	8.7	73.6	21.4	15.28	72.39	47.72	94.0	Cnc
14 Okt 2017	08h39m37.36s	+22 49' 54.1"	2.6195	2.7075	8.7	74.3	21.5	15.64	72.88	47.34	93.9	Cnc
15 Okt 2017	08h40m59.10s	+22 48' 33.2"	2.6189	2.6942	8.7	75.0	21.6	16.00	73.37	46.96	93.8	Cnc
16 Okt 2017	08h42m20.17s	+22 47' 14.7"	2.6183	2.6809	8.7	75.6	21.6	16.36	73.86	46.56	93.7	Cnc
17 Okt 2017	08h43m40.56s	+22 45' 58.8"	2.6177	2.6676	8.7	76.3	21.7	16.73	74.35	46.16	93.6	Cnc
18 Okt 2017	08h45m00.25s	+22 44' 45.6"	2.6172	2.6543	8.6	77.0	21.8	17.11	74.85	45.74	93.5	Cnc
19 Okt 2017	08h46m19.23s	+22 43' 35.2"	2.6166	2.6409	8.6	77.7	21.8	17.48	75.35	45.32	93.4	Cnc
20 Okt 2017	08h47m37.48s	+22 42' 27.8"	2.6160	2.6275	8.6	78.4	21.9	17.86	75.85	44.90	93.2	Cnc
21 Okt 2017	08h48m55.00s	+22 41' 23.5"	2.6154	2.6140	8.6	79.1	21.9	18.24	76.35	44.46	93.1	Cnc
22 Okt 2017	08h50m11.78s	+22 40' 22.5"	2.6149	2.6005	8.6	79.8	22.0	18.63	76.86	44.02	92.9	Cnc
23 Okt 2017	08h51m27.79s	+22 39' 24.9"	2.6143	2.5870	8.6	80.5	22.0	19.02	77.36	43.57	92.8	Cnc
24 Okt 2017	08h52m43.02s	+22 38' 30.8"	2.6137	2.5735	8.6	81.2	22.1	19.41	77.87	43.11	92.6	Cnc
25 Okt 2017	08h53m57.48s	+22 37' 40.4"	2.6132	2.5600	8.6	81.9	22.1	19.81	78.38	42.64	92.4	Cnc
26 Okt 2017	08h55m11.13s	+22 36' 53.9"	2.6126	2.5464	8.6	82.7	22.2	20.21	78.90	42.17	92.2	Cnc
27 Okt 2017	08h56m23.98s	+22 36' 11.3"	2.6121	2.5328	8.6	83.4	22.2	20.61	79.41	41.69	92.0	Cnc

# Ephemeride des Zwergplaneten (1) Ceres

Datum	RA	Deklination	r	delta	mag	Elong	Phase	Höhe	Az.	Gesch.	PA	Stb
-----	--	-----	-	-----	---	-----	-----	-----	-----	-----	-----	-----
28 Okt 2017	08h57m36.00s	+22 35' 32.9"	2.6115	2.5193	8.5	84.1	22.2	21.02	79.93	41.20	91.8	Cnc
29 Okt 2017	08h58m47.20s	+22 34' 58.7"	2.6110	2.5057	8.5	84.8	22.3	21.43	80.45	40.71	91.6	Cnc
30 Okt 2017	08h59m57.54s	+22 34' 28.9"	2.6104	2.4921	8.5	85.6	22.3	21.85	80.98	40.21	91.3	Cnc
31 Okt 2017	09h01m07.03s	+22 34' 03.7"	2.6099	2.4784	8.5	86.3	22.3	22.27	81.50	39.70	91.1	Cnc
1 Nov 2017	09h02m15.64s	+22 33' 43.2"	2.6093	2.4648	8.5	87.0	22.3	22.69	82.03	39.18	90.8	Cnc
2 Nov 2017	09h03m23.38s	+22 33' 27.5"	2.6088	2.4512	8.5	87.8	22.3	23.12	82.57	38.66	90.5	Cnc
3 Nov 2017	09h04m30.21s	+22 33' 16.9"	2.6082	2.4376	8.5	88.5	22.3	23.55	83.10	38.13	90.2	Cnc
4 Nov 2017	09h05m36.13s	+22 33' 11.3"	2.6077	2.4240	8.5	89.3	22.4	23.98	83.64	37.59	89.8	Cnc
5 Nov 2017	09h06m41.13s	+22 33' 11.1"	2.6072	2.4104	8.4	90.1	22.4	24.42	84.18	37.05	89.5	Cnc
6 Nov 2017	09h07m45.19s	+22 33' 16.4"	2.6066	2.3967	8.4	90.8	22.3	24.86	84.73	36.49	89.1	Cnc
7 Nov 2017	09h08m48.29s	+22 33' 27.3"	2.6061	2.3831	8.4	91.6	22.3	25.31	85.28	35.93	88.7	Cnc
8 Nov 2017	09h09m50.42s	+22 33' 44.0"	2.6056	2.3695	8.4	92.4	22.3	25.76	85.83	35.36	88.3	Cnc
9 Nov 2017	09h10m51.56s	+22 34' 06.6"	2.6051	2.3560	8.4	93.1	22.3	26.21	86.39	34.78	87.9	Cnc
10 Nov 2017	09h11m51.68s	+22 34' 35.4"	2.6045	2.3424	8.4	93.9	22.3	26.67	86.95	34.19	87.4	Cnc
11 Nov 2017	09h12m50.77s	+22 35' 10.4"	2.6040	2.3288	8.4	94.7	22.3	27.13	87.51	33.59	86.9	Cnc
12 Nov 2017	09h13m48.81s	+22 35' 51.8"	2.6035	2.3153	8.4	95.5	22.2	27.60	88.08	32.99	86.4	Cnc
13 Nov 2017	09h14m45.78s	+22 36' 39.9"	2.6030	2.3018	8.3	96.3	22.2	28.07	88.65	32.37	85.8	Cnc
14 Nov 2017	09h15m41.66s	+22 37' 34.7"	2.6025	2.2883	8.3	97.1	22.2	28.54	89.23	31.75	85.2	Cnc
15 Nov 2017	09h16m36.43s	+22 38' 36.4"	2.6020	2.2748	8.3	97.9	22.1	29.02	89.81	31.12	84.6	Cnc
16 Nov 2017	09h17m30.07s	+22 39' 45.1"	2.6015	2.2614	8.3	98.7	22.1	29.51	90.40	30.48	83.9	Cnc
17 Nov 2017	09h18m22.57s	+22 41' 01.1"	2.6009	2.2480	8.3	99.5	22.0	30.00	90.99	29.84	83.2	Cnc
18 Nov 2017	09h19m13.90s	+22 42' 24.4"	2.6004	2.2346	8.3	100.3	22.0	30.49	91.58	29.19	82.4	Cnc
19 Nov 2017	09h20m04.04s	+22 43' 55.2"	2.5999	2.2213	8.2	101.1	21.9	30.99	92.18	28.54	81.6	Cnc
20 Nov 2017	09h20m52.97s	+22 45' 33.6"	2.5994	2.2080	8.2	102.0	21.8	31.49	92.79	27.88	80.7	Cnc
21 Nov 2017	09h21m40.68s	+22 47' 19.7"	2.5990	2.1948	8.2	102.8	21.8	31.99	93.40	27.22	79.8	Cnc
22 Nov 2017	09h22m27.16s	+22 49' 13.8"	2.5985	2.1816	8.2	103.6	21.7	32.50	94.02	26.55	78.8	Leo
23 Nov 2017	09h23m12.37s	+22 51' 15.8"	2.5980	2.1685	8.2	104.5	21.6	33.02	94.65	25.89	77.8	Leo
24 Nov 2017	09h23m56.30s	+22 53' 26.0"	2.5975	2.1554	8.2	105.3	21.5	33.54	95.28	25.23	76.7	Leo
25 Nov 2017	09h24m38.94s	+22 55' 44.4"	2.5970	2.1424	8.2	106.2	21.4	34.06	95.92	24.56	75.5	Leo
26 Nov 2017	09h25m20.27s	+22 58' 11.2"	2.5965	2.1295	8.1	107.1	21.3	34.59	96.56	23.91	74.2	Leo
27 Nov 2017	09h26m00.26s	+23 00' 46.5"	2.5960	2.1166	8.1	107.9	21.2	35.13	97.21	23.25	72.8	Leo
28 Nov 2017	09h26m38.91s	+23 03' 30.3"	2.5956	2.1038	8.1	108.8	21.1	35.66	97.87	22.60	71.4	Leo
29 Nov 2017	09h27m16.18s	+23 06' 22.8"	2.5951	2.0910	8.1	109.7	21.0	36.21	98.54	21.96	69.8	Leo
30 Nov 2017	09h27m52.08s	+23 09' 24.1"	2.5946	2.0784	8.1	110.6	20.8	36.75	99.22	21.33	68.1	Leo
1 Dez 2017	09h28m26.57s	+23 12' 34.2"	2.5941	2.0658	8.0	111.4	20.7	37.30	99.90	20.70	66.3	Leo
2 Dez 2017	09h28m59.65s	+23 15' 53.3"	2.5937	2.0533	8.0	112.3	20.6	37.86	100.60	20.10	64.4	Leo
3 Dez 2017	09h29m31.28s	+23 19' 21.4"	2.5932	2.0409	8.0	113.2	20.4	38.42	101.30	19.51	62.3	Leo
4 Dez 2017	09h30m01.46s	+23 22' 58.6"	2.5928	2.0285	8.0	114.1	20.3	38.99	102.01	18.94	60.0	Leo
5 Dez 2017	09h30m30.15s	+23 26' 45.0"	2.5923	2.0163	8.0	115.1	20.1	39.55	102.73	18.39	57.6	Leo
6 Dez 2017	09h30m57.35s	+23 30' 40.6"	2.5918	2.0042	8.0	116.0	20.0	40.13	103.46	17.86	55.1	Leo
7 Dez 2017	09h31m23.03s	+23 34' 45.6"	2.5914	1.9921	7.9	116.9	19.8	40.70	104.21	17.37	52.3	Leo
8 Dez 2017	09h31m47.16s	+23 38' 59.9"	2.5909	1.9802	7.9	117.8	19.6	41.29	104.96	16.91	49.4	Leo
9 Dez 2017	09h32m09.72s	+23 43' 23.6"	2.5905	1.9684	7.9	118.8	19.5	41.87	105.73	16.49	46.3	Leo
10 Dez 2017	09h32m30.70s	+23 47' 56.8"	2.5900	1.9567	7.9	119.7	19.3	42.46	106.51	16.11	43.0	Leo
11 Dez 2017	09h32m50.07s	+23 52' 39.5"	2.5896	1.9451	7.9	120.7	19.1	43.06	107.31	15.79	39.5	Leo
12 Dez 2017	09h33m07.80s	+23 57' 31.6"	2.5892	1.9336	7.8	121.6	18.9	43.65	108.11	15.51	35.9	Leo
13 Dez 2017	09h33m23.86s	+24 02' 33.5"	2.5887	1.9222	7.8	122.6	18.7	44.25	108.94	15.30	32.1	Leo
14 Dez 2017	09h33m38.28s	+24 07' 44.5"	2.5883	1.9110	7.8	123.5	18.5	44.86	109.77	15.15	28.2	Leo
15 Dez 2017	09h33m51.02s	+24 13' 04.9"	2.5879	1.8999	7.8	124.5	18.3	45.47	110.63	15.06	24.2	Leo
16 Dez 2017	09h34m02.06s	+24 18' 34.6"	2.5874	1.8889	7.8	125.5	18.0	46.08	111.50	15.05	20.1	Leo
17 Dez 2017	09h34m11.38s	+24 24' 13.7"	2.5870	1.8781	7.7	126.5	17.8	46.69	112.39	15.10	16.1	Leo
18 Dez 2017	09h34m18.97s	+24 30' 01.8"	2.5866	1.8674	7.7	127.4	17.6	47.31	113.29	15.22	12.1	Leo
19 Dez 2017	09h34m24.82s	+24 35' 59.1"	2.5862	1.8569	7.7	128.4	17.3	47.93	114.22	15.42	8.1	Leo
20 Dez 2017	09h34m28.92s	+24 42' 05.3"	2.5857	1.8466	7.7	129.4	17.1	48.55	115.17	15.67	4.3	Leo
21 Dez 2017	09h34m31.26s	+24 48' 20.3"	2.5853	1.8363	7.7	130.4	16.8	49.18	116.14	15.99	0.6	Leo
22 Dez 2017	09h34m31.83s	+24 54' 44.0"	2.5849	1.8263	7.6	131.4	16.6	49.81	117.13	16.37	357.0	Leo
23 Dez 2017	09h34m30.62s	+25 01' 16.2"	2.5845	1.8164	7.6	132.5	16.3	50.43	118.15	16.79	353.6	Leo
24 Dez 2017	09h34m27.63s	+25 07' 56.6"	2.5841	1.8067	7.6	133.5	16.0	51.06	119.19	17.27	350.3	Leo
25 Dez 2017	09h34m22.86s	+25 14' 45.2"	2.5837	1.7972	7.6	134.5	15.8	51.69	120.26	17.79	347.3	Leo
26 Dez 2017	09h34m16.29s	+25 21' 41.6"	2.5833	1.7878	7.5	135.5	15.5	52.32	121.36	18.35	344.4	Leo
27 Dez 2017	09h34m07.94s	+25 28' 45.7"	2.5829	1.7787	7.5	136.6	15.2	52.95	122.48	18.94	341.7	Leo
28 Dez 2017	09h33m57.80s	+25 35' 57.1"	2.5825	1.7697	7.5	137.6	14.9	53.58	123.64	19.56	339.2	Leo
29 Dez 2017	09h33m45.88s	+25 43' 15.7"	2.5821	1.7609	7.5	138.6	14.6	54.21	124.83	20.21	336.8	Leo
30 Dez 2017	09h33m32.17s	+25 50' 41.1"	2.5817	1.7523	7.5	139.7	14.3	54.84	126.05	20.87	334.5	Leo
31 Dez 2017	09h33m16.68s	+25 58' 13.0"	2.5813	1.7439	7.4	140.7	14.0	55.46	127.32	21.55	332.4	Leo
1 Jan 2018	09h32m59.42s	+26 05' 51.1"	2.5810	1.7358	7.4	141.8	13.6	56.08	128.62	22.24	330.5	Leo
2 Jan 2018	09h32m40.39s	+26 13' 35.1"	2.5806	1.7278	7.4	142.8	13.3	56.70	129.96	22.94	328.6	Leo
3 Jan 2018	09h32m19.60s	+26 21' 24.6"	2.5802	1.7200	7.4	143.9	13.0	57.31	131.34	23.65	326.8	Leo
4 Jan 2018	09h31m57.05s	+26 29' 19.3"	2.5798	1.7125	7.3	144.9	12.7	57.92	132.77	24.36	325.2	Leo
5 Jan 2018	09h31m32.77s	+26 37' 18.8"	2.5795	1.7051	7.3	146.0	12.3	58.52	134.24	25.07	323.6	Leo
6 Jan 2018	09h31m06.75s	+26 45' 22.8"	2.5791	1.6980	7.3	147.0	12.0	59.12	135.77	25.78	322.1	Leo
7 Jan 2018	09h30m39.01s	+26 53' 30.6"	2.5787	1.6911	7.3	148.1	11.6	59.70	137.34	26.49	320.7	Leo
8 Jan 2018	09h30m09.57s	+27 01' 42.1"	2.5784	1.6845	7.3	149.1	11.3	60.28	138.97	27.18	319.4	Leo
9 Jan 2018	09h29m38.46s	+27 09' 56.5"	2.5780	1.6781	7.2	150.2	10.9	60.85	140.65	27.87	318.1	Leo



## Ephemeride des Zwergplaneten (1) Ceres

Datum	RA	Deklination	r	delta	mag	Elong	Phase	Höhe	Az.	Gesch.	PA	Stb
-----	--	-----	-	-----	---	-----	-----	-----	-----	-----	-----	---
10 Jan 2018	09h29m05.69s	+27 18' 13.6"	2.5777	1.6719	7.2	151.2	10.6	61.40	142.39	28.54	316.9	Leo
11 Jan 2018	09h28m31.29s	+27 26' 32.7"	2.5773	1.6660	7.2	152.2	10.2	61.94	144.19	29.20	315.7	Leo
12 Jan 2018	09h27m55.30s	+27 34' 53.4"	2.5769	1.6603	7.2	153.3	9.9	62.47	146.06	29.83	314.6	Leo
13 Jan 2018	09h27m17.74s	+27 43' 15.2"	2.5766	1.6548	7.1	154.3	9.5	62.98	147.99	30.45	313.6	Leo
14 Jan 2018	09h26m38.67s	+27 51' 37.4"	2.5763	1.6496	7.1	155.3	9.2	63.48	149.98	31.04	312.5	Leo
15 Jan 2018	09h25m58.11s	+27 59' 59.6"	2.5759	1.6447	7.1	156.3	8.8	63.96	152.05	31.60	311.5	Leo
16 Jan 2018	09h25m16.12s	+28 08' 21.2"	2.5756	1.6400	7.1	157.3	8.5	64.41	154.18	32.14	310.6	Leo
17 Jan 2018	09h24m32.73s	+28 16' 41.5"	2.5752	1.6356	7.1	158.2	8.1	64.85	156.38	32.65	309.7	Leo
18 Jan 2018	09h23m48.01s	+28 25' 00.1"	2.5749	1.6314	7.0	159.2	7.8	65.25	158.65	33.13	308.8	Leo
19 Jan 2018	09h23m02.00s	+28 33' 16.4"	2.5746	1.6275	7.0	160.1	7.5	65.64	160.98	33.57	307.9	Leo
20 Jan 2018	09h22m14.76s	+28 41' 29.7"	2.5743	1.6239	7.0	161.0	7.2	66.00	163.39	33.98	307.1	Cnc
21 Jan 2018	09h21m26.36s	+28 49' 39.5"	2.5739	1.6206	7.0	161.8	6.9	66.32	165.86	34.35	306.3	Cnc
22 Jan 2018	09h20m36.85s	+28 57' 45.2"	2.5736	1.6175	7.0	162.6	6.6	66.62	168.39	34.69	305.5	Cnc
23 Jan 2018	09h19m46.30s	+29 05' 46.3"	2.5733	1.6147	6.9	163.4	6.3	66.89	170.97	34.98	304.7	Cnc
24 Jan 2018	09h18m54.78s	+29 13' 42.2"	2.5730	1.6122	6.9	164.1	6.0	67.12	173.61	35.24	303.9	Cnc
25 Jan 2018	09h18m02.35s	+29 21' 32.3"	2.5727	1.6099	6.9	164.7	5.8	67.31	176.30	35.46	303.2	Cnc
26 Jan 2018	09h17m09.09s	+29 29' 16.0"	2.5724	1.6079	6.9	165.3	5.6	67.47	179.03	35.64	302.5	Cnc
27 Jan 2018	09h16m15.07s	+29 36' 53.0"	2.5721	1.6062	6.9	165.7	5.4	67.59	181.79	35.78	301.7	Cnc
28 Jan 2018	09h15m20.36s	+29 44' 22.5"	2.5718	1.6048	6.9	166.1	5.3	67.68	184.57	35.87	301.0	Cnc
29 Jan 2018	09h14m25.04s	+29 51' 44.3"	2.5715	1.6037	6.9	166.4	5.2	67.72	187.37	35.93	300.3	Cnc
30 Jan 2018	09h13m29.17s	+29 58' 57.7"	2.5712	1.6028	6.9	166.6	5.1	67.73	190.17	35.95	299.6	Cnc
31 Jan 2018	09h12m32.84s	+30 06' 02.3"	2.5709	1.6022	6.9	166.7	5.1	67.69	192.98	35.93	299.0	Cnc
1 Feb 2018	09h11m36.11s	+30 12' 57.7"	2.5706	1.6019	6.9	166.6	5.1	67.62	195.77	35.87	298.3	Cnc
2 Feb 2018	09h10m39.06s	+30 19' 43.5"	2.5703	1.6018	6.9	166.5	5.2	67.51	198.54	35.77	297.6	Cnc
3 Feb 2018	09h09m41.78s	+30 26' 19.1"	2.5700	1.6021	6.9	166.2	5.3	67.36	201.28	35.63	296.9	Cnc
4 Feb 2018	09h08m44.33s	+30 32' 44.3"	2.5697	1.6026	6.9	165.8	5.4	67.17	203.98	35.45	296.2	Cnc
5 Feb 2018	09h07m46.80s	+30 38' 58.6"	2.5695	1.6034	6.9	165.4	5.6	66.95	206.64	35.23	295.6	Cnc
6 Feb 2018	09h06m49.26s	+30 45' 01.6"	2.5692	1.6045	6.9	164.8	5.8	66.69	209.25	34.96	294.9	Cnc
7 Feb 2018	09h05m51.81s	+30 50' 53.1"	2.5689	1.6058	6.9	164.2	6.0	66.40	211.80	34.66	294.2	Cnc
8 Feb 2018	09h04m54.51s	+30 56' 32.6"	2.5687	1.6074	6.9	163.5	6.3	66.07	214.30	34.32	293.5	Cnc
9 Feb 2018	09h03m57.47s	+31 02' 00.0"	2.5684	1.6093	6.9	162.8	6.5	65.72	216.72	33.94	292.9	Cnc
10 Feb 2018	09h03m00.74s	+31 07' 14.8"	2.5681	1.6115	7.0	162.0	6.8	65.33	219.09	33.51	292.2	Cnc
11 Feb 2018	09h02m04.43s	+31 12' 16.9"	2.5679	1.6139	7.0	161.2	7.1	64.92	221.38	33.05	291.5	Cnc
12 Feb 2018	09h01m08.62s	+31 17' 06.1"	2.5676	1.6166	7.0	160.3	7.4	64.49	223.60	32.55	290.8	Cnc
13 Feb 2018	09h00m13.38s	+31 21' 42.1"	2.5674	1.6195	7.0	159.4	7.8	64.02	225.75	32.02	290.1	Cnc
14 Feb 2018	08h59m18.79s	+31 26' 04.7"	2.5671	1.6228	7.0	158.5	8.1	63.54	227.83	31.44	289.4	Cnc
15 Feb 2018	08h58m24.94s	+31 30' 13.9"	2.5669	1.6262	7.0	157.5	8.5	63.04	229.85	30.83	288.6	Cnc
16 Feb 2018	08h57m31.91s	+31 34' 09.5"	2.5666	1.6300	7.1	156.6	8.8	62.52	231.79	30.19	287.9	Cnc
17 Feb 2018	08h56m39.76s	+31 37' 51.3"	2.5664	1.6340	7.1	155.6	9.2	61.98	233.67	29.52	287.1	Cnc
18 Feb 2018	08h55m48.58s	+31 41' 19.5"	2.5662	1.6382	7.1	154.6	9.5	61.42	235.48	28.81	286.4	Cnc
19 Feb 2018	08h54m58.43s	+31 44' 33.8"	2.5659	1.6427	7.1	153.6	9.9	60.85	237.23	28.08	285.6	Cnc
20 Feb 2018	08h54m09.39s	+31 47' 34.4"	2.5657	1.6474	7.2	152.6	10.2	60.27	238.91	27.32	284.7	Cnc
21 Feb 2018	08h53m21.51s	+31 50' 21.2"	2.5655	1.6524	7.2	151.5	10.6	59.67	240.54	26.53	283.9	Cnc
22 Feb 2018	08h52m34.87s	+31 52' 54.2"	2.5653	1.6576	7.2	150.5	10.9	59.07	242.11	25.72	283.0	Cnc
23 Feb 2018	08h51m49.52s	+31 55' 13.5"	2.5650	1.6631	7.2	149.5	11.3	58.45	243.63	24.89	282.1	Cnc
24 Feb 2018	08h51m05.52s	+31 57' 19.3"	2.5648	1.6688	7.2	148.4	11.7	57.83	245.10	24.03	281.1	Cnc
25 Feb 2018	08h50m22.91s	+31 59' 11.5"	2.5646	1.6747	7.3	147.4	12.0	57.20	246.51	23.17	280.1	Cnc
26 Feb 2018	08h49m41.75s	+32 00' 50.4"	2.5644	1.6808	7.3	146.4	12.3	56.56	247.88	22.28	279.1	Cnc
27 Feb 2018	08h49m02.09s	+32 02' 16.0"	2.5642	1.6871	7.3	145.3	12.7	55.92	249.20	21.39	278.0	Cnc
28 Feb 2018	08h48m23.95s	+32 03' 28.5"	2.5640	1.6937	7.3	144.3	13.0	55.27	250.48	20.49	276.8	Cnc
1 Mar 2018	08h47m47.37s	+32 04' 28.0"	2.5638	1.7004	7.3	143.3	13.4	54.62	251.72	19.58	275.5	Cnc
2 Mar 2018	08h47m12.41s	+32 05' 14.8"	2.5636	1.7074	7.4	142.2	13.7	53.97	252.92	18.66	274.1	Cnc
3 Mar 2018	08h46m39.07s	+32 05' 48.9"	2.5634	1.7146	7.4	141.2	14.0	53.31	254.09	17.74	272.6	Cnc
4 Mar 2018	08h46m07.40s	+32 06' 10.6"	2.5632	1.7219	7.4	140.2	14.3	52.65	255.22	16.82	271.0	Cnc
5 Mar 2018	08h45m37.42s	+32 06' 20.0"	2.5630	1.7295	7.4	139.1	14.7	51.99	256.31	15.90	269.2	Cnc
6 Mar 2018	08h45m09.16s	+32 06' 17.3"	2.5629	1.7372	7.4	138.1	15.0	51.33	257.38	14.98	267.2	Cnc
7 Mar 2018	08h44m42.65s	+32 06' 02.7"	2.5627	1.7452	7.5	137.1	15.3	50.66	258.41	14.08	265.0	Cnc
8 Mar 2018	08h44m17.90s	+32 05' 36.4"	2.5625	1.7533	7.5	136.1	15.6	50.00	259.42	13.18	262.6	Cnc
9 Mar 2018	08h43m54.94s	+32 04' 58.6"	2.5623	1.7616	7.5	135.1	15.9	49.33	260.39	12.30	259.8	Cnc
10 Mar 2018	08h43m33.78s	+32 04' 09.4"	2.5622	1.7700	7.5	134.1	16.2	48.67	261.34	11.44	256.6	Cnc
11 Mar 2018	08h43m14.45s	+32 03' 09.1"	2.5620	1.7786	7.6	133.1	16.5	48.01	262.27	10.61	252.9	Cnc
12 Mar 2018	08h42m56.95s	+32 01' 57.9"	2.5618	1.7874	7.6	132.1	16.7	47.35	263.17	9.83	248.7	Cnc
13 Mar 2018	08h42m41.30s	+32 00' 36.0"	2.5617	1.7964	7.6	131.1	17.0	46.69	264.05	9.09	243.9	Cnc
14 Mar 2018	08h42m27.51s	+31 59' 03.7"	2.5615	1.8055	7.6	130.1	17.3	46.03	264.91	8.43	238.2	Cnc
15 Mar 2018	08h42m15.58s	+31 57' 21.0"	2.5614	1.8148	7.6	129.1	17.5	45.38	265.75	7.85	231.7	Cnc
16 Mar 2018	08h42m05.53s	+31 55' 28.3"	2.5612	1.8242	7.7	128.2	17.8	44.72	266.57	7.38	224.3	Cnc
17 Mar 2018	08h41m57.35s	+31 53' 25.7"	2.5611	1.8338	7.7	127.2	18.0	44.07	267.37	7.04	216.1	Cnc
18 Mar 2018	08h41m51.04s	+31 51' 13.5"	2.5609	1.8435	7.7	126.2	18.3	43.42	268.16	6.85	207.3	Cnc
19 Mar 2018	08h41m46.61s	+31 48' 51.8"	2.5608	1.8533	7.7	125.3	18.5	42.78	268.92	6.82	198.2	Cnc
20 Mar 2018	08h41m44.05s	+31 46' 21.0"	2.5607	1.8633	7.7	124.3	18.7	42.13	269.67	6.95	189.3	Cnc
21 Mar 2018	08h41m43.36s	+31 43' 41.1"	2.5605	1.8734	7.7	123.4	18.9	41.49	270.41	7.23	181.0	Cnc
22 Mar 2018	08h41m44.52s	+31 40' 52.5"	2.5604	1.8836	7.8	122.5	19.2	40.86	271.13	7.64	173.4	Cnc
23 Mar 2018	08h41m47.54s	+31 37' 55.2"	2.5603	1.8939	7.8	121.5	19.4	40.22	271.83	8.16	166.7	Cnc
24 Mar 2018	08h41m52.38s	+31 34' 49.7"	2.5602	1.9044	7.8	120.6	19.6	39.59	272.53	8.76	161.0	Cnc

## Ephemeride des Zwergplaneten (1) Ceres

Datum	RA	Deklination	r	delta	mag	Elong	Phase	Höhe	Az.	Gesch.	PA	Stb
-----	--	-----	-	-----	---	-----	-----	-----	-----	-----	-----	-----
25 Mar 2018	08h41m59.05s	+31 31' 35.9"	2.5600	1.9149	7.8	119.7	19.8	38.96	273.21	9.43	156.0	Cnc
26 Mar 2018	08h42m07.51s	+31 28' 14.2"	2.5599	1.9256	7.8	118.8	20.0	38.34	273.87	10.16	151.7	Cnc
27 Mar 2018	08h42m17.77s	+31 24' 44.6"	2.5598	1.9364	7.9	117.9	20.1	37.72	274.53	10.92	148.1	Cnc
28 Mar 2018	08h42m29.79s	+31 21' 07.5"	2.5597	1.9472	7.9	117.0	20.3	37.10	275.17	11.70	144.9	Cnc
29 Mar 2018	08h42m43.55s	+31 17' 23.0"	2.5596	1.9582	7.9	116.1	20.5	36.49	275.81	12.51	142.2	Cnc
30 Mar 2018	08h42m59.04s	+31 13' 31.2"	2.5595	1.9692	7.9	115.2	20.7	35.88	276.43	13.33	139.8	Cnc
31 Mar 2018	08h43m16.23s	+31 09' 32.2"	2.5594	1.9804	7.9	114.3	20.8	35.27	277.05	14.15	137.7	Cnc
1 Apr 2018	08h43m35.10s	+31 05' 26.4"	2.5593	1.9916	7.9	113.5	21.0	34.67	277.65	14.99	135.9	Cnc
2 Apr 2018	08h43m55.63s	+31 01' 13.7"	2.5592	2.0029	8.0	112.6	21.1	34.07	278.25	15.82	134.2	Cnc
3 Apr 2018	08h44m17.81s	+30 56' 54.3"	2.5591	2.0143	8.0	111.8	21.3	33.48	278.83	16.66	132.7	Cnc
4 Apr 2018	08h44m41.60s	+30 52' 28.4"	2.5590	2.0257	8.0	110.9	21.4	32.89	279.41	17.49	131.4	Cnc
5 Apr 2018	08h45m06.99s	+30 47' 56.1"	2.5590	2.0373	8.0	110.0	21.5	32.30	279.98	18.33	130.2	Cnc
6 Apr 2018	08h45m33.96s	+30 43' 17.4"	2.5589	2.0489	8.0	109.2	21.7	31.71	280.55	19.16	129.2	Cnc
7 Apr 2018	08h46m02.49s	+30 38' 32.6"	2.5588	2.0605	8.0	108.4	21.8	31.13	281.10	19.98	128.2	Cnc
8 Apr 2018	08h46m32.55s	+30 33' 41.7"	2.5587	2.0722	8.1	107.5	21.9	30.55	281.65	20.80	127.3	Cnc
9 Apr 2018	08h47m04.13s	+30 28' 44.8"	2.5587	2.0840	8.1	106.7	22.0	29.98	282.19	21.62	126.4	Cnc
10 Apr 2018	08h47m37.20s	+30 23' 42.1"	2.5586	2.0959	8.1	105.9	22.1	29.41	282.73	22.43	125.7	Cnc
11 Apr 2018	08h48m11.75s	+30 18' 33.6"	2.5585	2.1078	8.1	105.1	22.2	28.84	283.26	23.23	125.0	Cnc
12 Apr 2018	08h48m47.74s	+30 13' 19.4"	2.5585	2.1197	8.1	104.3	22.3	28.28	283.78	24.02	124.3	Cnc
13 Apr 2018	08h49m25.16s	+30 07' 59.7"	2.5584	2.1317	8.1	103.5	22.4	27.72	284.30	24.80	123.7	Cnc
14 Apr 2018	08h50m04.00s	+30 02' 34.5"	2.5584	2.1438	8.2	102.7	22.5	27.16	284.81	25.58	123.2	Cnc
15 Apr 2018	08h50m44.21s	+29 57' 03.8"	2.5583	2.1559	8.2	101.9	22.6	26.60	285.32	26.35	122.7	Cnc
16 Apr 2018	08h51m25.79s	+29 51' 27.9"	2.5583	2.1680	8.2	101.1	22.6	26.05	285.82	27.11	122.2	Cnc
17 Apr 2018	08h52m08.71s	+29 45' 46.8"	2.5583	2.1802	8.2	100.3	22.7	25.51	286.32	27.86	121.7	Cnc
18 Apr 2018	08h52m52.94s	+29 40' 00.5"	2.5582	2.1923	8.2	99.5	22.8	24.96	286.81	28.60	121.3	Cnc
19 Apr 2018	08h53m38.47s	+29 34' 09.2"	2.5582	2.2046	8.2	98.8	22.8	24.42	287.30	29.33	120.9	Cnc
20 Apr 2018	08h54m25.26s	+29 28' 13.0"	2.5582	2.2168	8.2	98.0	22.9	23.88	287.78	30.04	120.5	Cnc
21 Apr 2018	08h55m13.29s	+29 22' 11.8"	2.5581	2.2291	8.3	97.3	22.9	23.35	288.26	30.75	120.2	Cnc
22 Apr 2018	08h56m02.54s	+29 16' 05.8"	2.5581	2.2414	8.3	96.5	23.0	22.81	288.74	31.45	119.9	Cnc
23 Apr 2018	08h56m52.98s	+29 09' 55.1"	2.5581	2.2537	8.3	95.7	23.0	22.29	289.21	32.13	119.6	Cnc
24 Apr 2018	08h57m44.58s	+29 03' 39.7"	2.5581	2.2661	8.3	95.0	23.1	21.76	289.67	32.80	119.3	Cnc
25 Apr 2018	08h58m37.32s	+28 57' 19.7"	2.5581	2.2784	8.3	94.3	23.1	21.24	290.14	33.46	119.0	Cnc
26 Apr 2018	08h59m31.16s	+28 50' 55.2"	2.5580	2.2908	8.3	93.5	23.1	20.71	290.60	34.11	118.8	Cnc
27 Apr 2018	09h00m26.10s	+28 44' 26.1"	2.5580	2.3032	8.3	92.8	23.1	20.20	291.06	34.75	118.5	Cnc
28 Apr 2018	09h01m22.10s	+28 37' 52.6"	2.5580	2.3156	8.3	92.1	23.2	19.68	291.51	35.37	118.3	Cnc
29 Apr 2018	09h02m19.13s	+28 31' 14.7"	2.5580	2.3279	8.4	91.3	23.2	19.17	291.97	35.99	118.1	Cnc
30 Apr 2018	09h03m17.18s	+28 24' 32.5"	2.5580	2.3403	8.4	90.6	23.2	18.66	292.42	36.60	117.9	Cnc
1 Mai 2018	09h04m16.23s	+28 17' 45.9"	2.5581	2.3527	8.4	89.9	23.2	18.15	292.86	37.19	117.7	Cnc
2 Mai 2018	09h05m16.25s	+28 10' 55.1"	2.5581	2.3651	8.4	89.2	23.2	17.65	293.31	37.78	117.6	Cnc
3 Mai 2018	09h06m17.22s	+28 04' 00.0"	2.5581	2.3775	8.4	88.5	23.2	17.14	293.75	38.36	117.4	Cnc
4 Mai 2018	09h07m19.13s	+27 57' 00.7"	2.5581	2.3899	8.4	87.8	23.2	16.64	294.19	38.93	117.3	Cnc
5 Mai 2018	09h08m21.95s	+27 49' 57.2"	2.5581	2.4023	8.4	87.1	23.2	16.15	294.63	39.49	117.1	Cnc
6 Mai 2018	09h09m25.66s	+27 42' 49.6"	2.5581	2.4147	8.4	86.4	23.2	15.65	295.06	40.05	117.0	Cnc
7 Mai 2018	09h10m30.26s	+27 35' 37.8"	2.5582	2.4271	8.4	85.7	23.2	15.16	295.50	40.59	116.9	Cnc
8 Mai 2018	09h11m35.71s	+27 28' 22.0"	2.5582	2.4395	8.5	85.0	23.1	14.67	295.93	41.13	116.7	Cnc
9 Mai 2018	09h12m42.00s	+27 21' 02.1"	2.5582	2.4519	8.5	84.4	23.1	14.18	296.36	41.65	116.6	Cnc
10 Mai 2018	09h13m49.12s	+27 13' 38.2"	2.5583	2.4642	8.5	83.7	23.1	13.69	296.79	42.17	116.5	Cnc
11 Mai 2018	09h14m57.04s	+27 06' 10.2"	2.5583	2.4766	8.5	83.0	23.1	13.21	297.22	42.69	116.4	Cnc
12 Mai 2018	09h16m05.76s	+26 58' 38.3"	2.5584	2.4889	8.5	82.3	23.0	12.72	297.64	43.19	116.3	Cnc
13 Mai 2018	09h17m15.25s	+26 51' 02.5"	2.5584	2.5012	8.5	81.7	23.0	12.24	298.07	43.69	116.2	Cnc
14 Mai 2018	09h18m25.49s	+26 43' 22.7"	2.5585	2.5135	8.5	81.0	23.0	11.77	298.49	44.18	116.2	Cnc
15 Mai 2018	09h19m36.48s	+26 35' 39.1"	2.5585	2.5258	8.5	80.4	22.9	11.29	298.91	44.66	116.1	Cnc
16 Mai 2018	09h20m48.18s	+26 27' 51.6"	2.5586	2.5380	8.5	79.7	22.9	10.82	299.33	45.13	116.0	Cnc
17 Mai 2018	09h22m00.60s	+26 20' 00.3"	2.5586	2.5502	8.5	79.1	22.8	10.34	299.75	45.60	115.9	Cnc
18 Mai 2018	09h23m13.70s	+26 12' 05.2"	2.5587	2.5624	8.6	78.4	22.8	9.87	300.17	46.05	115.9	Leo
19 Mai 2018	09h24m27.47s	+26 04' 06.4"	2.5588	2.5746	8.6	77.8	22.7	9.41	300.59	46.50	115.8	Leo
20 Mai 2018	09h25m41.90s	+25 56' 03.9"	2.5588	2.5867	8.6	77.1	22.7	8.94	301.01	46.94	115.8	Leo
21 Mai 2018	09h26m56.95s	+25 47' 57.7"	2.5589	2.5988	8.6	76.5	22.6	8.47	301.42	47.36	115.7	Leo
22 Mai 2018	09h28m12.63s	+25 39' 47.8"	2.5590	2.6109	8.6	75.8	22.6	8.01	301.84	47.78	115.7	Leo
23 Mai 2018	09h29m28.90s	+25 31' 34.4"	2.5591	2.6229	8.6	75.2	22.5	7.55	302.26	48.19	115.6	Leo
24 Mai 2018	09h30m45.76s	+25 23' 17.4"	2.5592	2.6349	8.6	74.6	22.4	7.09	302.67	48.60	115.6	Leo
25 Mai 2018	09h32m03.18s	+25 14' 56.8"	2.5593	2.6469	8.6	74.0	22.4	6.63	303.09	48.99	115.5	Leo
26 Mai 2018	09h33m21.15s	+25 06' 32.7"	2.5593	2.6588	8.6	73.3	22.3	6.18	303.50	49.38	115.5	Leo
27 Mai 2018	09h34m39.65s	+24 58' 05.1"	2.5594	2.6707	8.6	72.7	22.2	5.72	303.92	49.76	115.5	Leo
28 Mai 2018	09h35m58.68s	+24 49' 34.1"	2.5595	2.6825	8.6	72.1	22.1	5.27	304.33	50.14	115.5	Leo
29 Mai 2018	09h37m18.22s	+24 40' 59.6"	2.5596	2.6944	8.6	71.5	22.1	4.82	304.75	50.50	115.4	Leo
30 Mai 2018	09h38m38.25s	+24 32' 21.6"	2.5598	2.7061	8.6	70.9	22.0	4.37	305.16	50.86	115.4	Leo
31 Mai 2018	09h39m58.76s	+24 23' 40.3"	2.5599	2.7178	8.7	70.3	21.9	3.92	305.58	51.22	115.4	Leo
1 Jun 2018	09h41m19.75s	+24 14' 55.5"	2.5600	2.7295	8.7	69.6	21.8	3.47	305.99	51.57	115.4	Leo
2 Jun 2018	09h42m41.19s	+24 06' 07.4"	2.5601	2.7412	8.7	69.0	21.7	3.03	306.41	51.91	115.4	Leo
3 Jun 2018	09h44m03.08s	+23 57' 16.0"	2.5602	2.7528	8.7	68.4	21.6	2.59	306.82	52.25	115.4	Leo
4 Jun 2018	09h45m25.42s	+23 48' 21.2"	2.5603	2.7643	8.7	67.8	21.5	2.14	307.24	52.59	115.4	Leo
5 Jun 2018	09h46m48.18s	+23 39' 23.1"	2.5605	2.7758	8.7	67.2	21.4	1.70	307.66	52.91	115.3	Leo
6 Jun 2018	09h48m11.36s	+23 30' 21.7"	2.5606	2.7872	8.7	66.7	21.3	1.26	308.07	53.24	115.3	Leo

## Ephemeride des Zwergplaneten (1) Ceres

Datum	RA	Deklination	r	delta	mag	Elong	Phase	Höhe	Az.	Gesch.	PA	Stb
-----	--	-----	-	-----	---	-----	-----	-----	-----	-----	-----	-----
7 Jun 2018	09h49m34.95s	+23 21' 17.1"	2.5607	2.7986	8.7	66.1	21.2	0.83	308.49	53.56	115.3	Leo
8 Jun 2018	09h50m58.94s	+23 12' 09.2"	2.5609	2.8100	8.7	65.5	21.1	0.39	308.91	53.87	115.3	Leo
9 Jun 2018	09h52m23.32s	+23 02' 58.1"	2.5610	2.8213	8.7	64.9	21.0	-0.04	309.33	54.18	115.3	Leo
10 Jun 2018	09h53m48.09s	+22 53' 43.8"	2.5611	2.8325	8.7	64.3	20.9	-0.48	309.75	54.48	115.3	Leo
11 Jun 2018	09h55m13.22s	+22 44' 26.4"	2.5613	2.8437	8.7	63.7	20.8	-0.91	310.17	54.78	115.3	Leo
12 Jun 2018	09h56m38.72s	+22 35' 05.8"	2.5614	2.8549	8.7	63.1	20.7	-1.34	310.59	55.08	115.3	Leo
13 Jun 2018	09h58m04.58s	+22 25' 42.1"	2.5616	2.8660	8.7	62.6	20.6	-1.77	311.01	55.37	115.3	Leo
14 Jun 2018	09h59m30.78s	+22 16' 15.3"	2.5617	2.8770	8.7	62.0	20.5	-2.19	311.44	55.65	115.3	Leo
15 Jun 2018	10h00m57.32s	+22 06' 45.5"	2.5619	2.8880	8.7	61.4	20.4	-2.62	311.86	55.93	115.3	Leo
16 Jun 2018	10h02m24.18s	+21 57' 12.7"	2.5621	2.8989	8.7	60.8	20.3	-3.04	312.28	56.21	115.3	Leo
17 Jun 2018	10h03m51.36s	+21 47' 36.9"	2.5622	2.9097	8.7	60.3	20.1	-3.47	312.71	56.47	115.4	Leo
18 Jun 2018	10h05m18.84s	+21 37' 58.1"	2.5624	2.9205	8.7	59.7	20.0	-3.89	313.14	56.73	115.4	Leo
19 Jun 2018	10h06m46.62s	+21 28' 16.5"	2.5626	2.9312	8.8	59.1	19.9	-4.31	313.57	56.99	115.4	Leo
20 Jun 2018	10h08m14.68s	+21 18' 32.1"	2.5628	2.9419	8.8	58.6	19.8	-4.73	314.00	57.24	115.4	Leo
21 Jun 2018	10h09m43.02s	+21 08' 44.8"	2.5629	2.9525	8.8	58.0	19.6	-5.14	314.43	57.48	115.4	Leo
22 Jun 2018	10h11m11.62s	+20 58' 54.7"	2.5631	2.9630	8.8	57.4	19.5	-5.56	314.86	57.72	115.4	Leo
23 Jun 2018	10h12m40.47s	+20 49' 01.9"	2.5633	2.9734	8.8	56.9	19.4	-5.97	315.30	57.96	115.4	Leo
24 Jun 2018	10h14m09.58s	+20 39' 06.3"	2.5635	2.9838	8.8	56.3	19.3	-6.39	315.73	58.19	115.4	Leo
25 Jun 2018	10h15m38.93s	+20 29' 08.1"	2.5637	2.9942	8.8	55.7	19.1	-6.80	316.17	58.41	115.4	Leo
26 Jun 2018	10h17m08.51s	+20 19' 07.2"	2.5639	3.0044	8.8	55.2	19.0	-7.21	316.61	58.63	115.4	Leo
27 Jun 2018	10h18m38.32s	+20 09' 03.7"	2.5641	3.0146	8.8	54.6	18.9	-7.62	317.05	58.85	115.5	Leo
28 Jun 2018	10h20m08.35s	+19 58' 57.5"	2.5643	3.0247	8.8	54.1	18.7	-8.02	317.50	59.07	115.5	Leo
29 Jun 2018	10h21m38.60s	+19 48' 48.8"	2.5645	3.0348	8.8	53.5	18.6	-8.43	317.94	59.28	115.5	Leo
30 Jun 2018	10h23m09.07s	+19 38' 37.5"	2.5647	3.0448	8.8	53.0	18.5	-8.83	318.39	59.49	115.5	Leo
1 Jul 2018	10h24m39.66s	+19 28' 24.4"	2.5649	3.0547	8.8	52.4	18.3	-9.23	318.84	59.69	115.5	Leo